



**THOMPSON
RIVERS
UNIVERSITY**

Integrated
Planning &
Effectiveness

Winter 2022 Course Evaluation

Administration and Results



Prepared by:
Rochelle Doyle, Learning Analyst
and Stephanie Klassen, Manager
Prepared on: May 31, 2022

Table of Contents

Table of Contents	2
Summary	4
Preparation	6
Inclusion	6
Considerations for Administration	6
Administration	8
Distribution of Survey Links	8
Distribution of Passwords	8
Kamloops Timeline	9
Data Cleaning	9
Survey Response Data Validation	9
Student TID	10
TID error message	10
Duplicate Responses	11
48 Hour Response Window	11
Time to Complete Survey	11
Time to Submit after Survey Open	12
Language Screening	12
Data Cleaning Summary	13
Reporting	13
Response Rates	14

Course Evaluation Reports	15
Dashboard Reports	15
Distribution	15
Appendix A – Participation and Response Rates by Department	17
Participation Rates by Department	17
Response Rates by Department	18
Appendix B – Response Validation Process	19
Appendix C – Custom Survey Instrument: Completion Time	20

Summary

Thompson Rivers University (TRU) administered 'every course, every time' on campus course evaluations in winter 2022. This was the fourteenth full implementation, with 1,437 courses included to be evaluated.¹ Evaluations were administered online for all courses during the last three weeks of classes (or equivalent).

The majority of Kamloops and Williams Lake evaluations took place between March 28th and April 15th, and School of Trades and Technology (Trades) evaluations took place during the months of January, February, March, and April (Figure 1). Course evaluations continued to be administered as per the regular process as the majority of on-campus courses returned to being taught in-person.

Figure 1. Course evaluation summary

Total		Kamloops	Williams Lake	Trades
2	Campuses			
9	Faculties and Schools	8	4	1
573 ²	Faculty Members	508	29	42
1,437	Courses	1,291	58	88
32,117	Student Course Enrolment	30,660	581	876
1,332 ³	Surveys	1,215	58	59
8,872	Student Headcount	7,930	241	731
93%	Survey Participation Rate	94%	78%	85%
14,873	Total Responses	14,132	287	454
49% ⁴	Response Rate	48%	59%	61%

Participation Rate: The percentage of surveys administered out of all prepared surveys. The reasons for not participating may be or may not be known.

Response Rate: The number of valid* responses received for each participating survey as a percentage of the total course enrolments (not the attendance in class that day). *one response per enrolled student received.

See Response Validation

¹ Summer semester courses are evaluated using the same course evaluation administration process as both winter and fall courses. Due to a smaller number of courses a report on the administration and results is not produced.

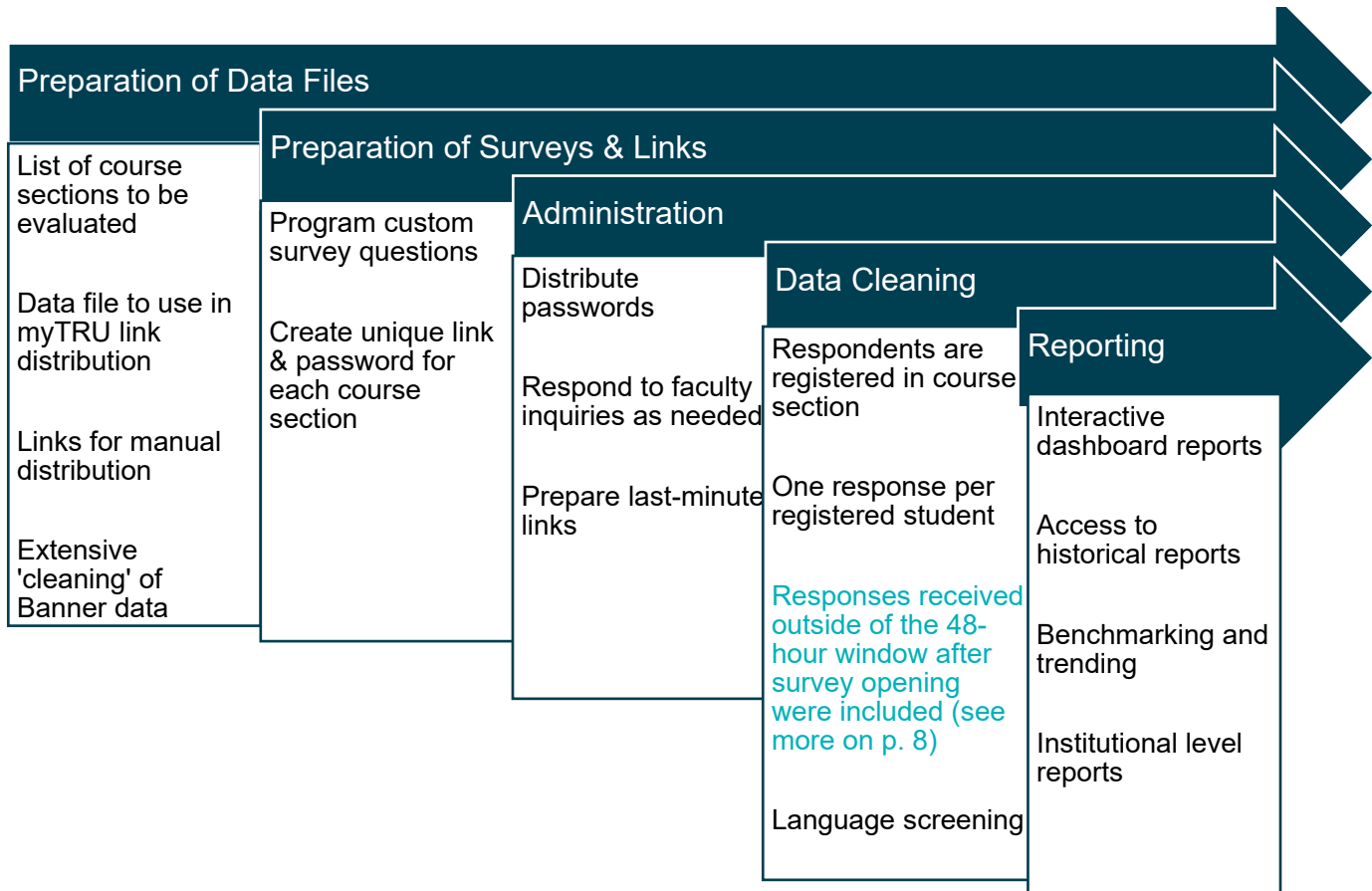
² Some instructors had course evaluations on more than one campus.

³ Some courses were set up as a combined evaluation, therefore the total number of surveys is less than the total number of included courses.

⁴ Includes only surveys that were opened.

Technical administration of the evaluations was carried out by Integrated Planning and Effectiveness (IPE). The technical administration included: preparation of data files, surveys, and links; technical administration of the survey; data cleaning; reporting; and providing technical assistance on an ad hoc basis (Figure 2).

Figure 2. Technical administration process



Preparation

Inclusion

There were 1,437 courses identified for inclusion in course evaluations, and 1,332 surveys were prepared (Figure 3). This involved 573 individual faculty members from each of the 9 faculties and schools (including Williams Lake campus). Along with classroom-based, primary sections, this administration also included all Nursing practice and laboratory practice sections, as well as all Faculty of Science laboratories (Figure 4).

Figure 3. Faculty, Courses, Surveys, and Student Course Enrolments by Division - Institutional, Winter 2022

		Bob Gagliardi School of Business and Economics	Faculty of Adventure, Culinary Arts and Tourism	Faculty of Arts	Faculty of Education and Social Work	Faculty of Law	Faculty of Science	Faculty of Student Development	School of Nursing	School of Trades and Technology	Total
Faculty Members	#	92	27	98	80	36	136	5	66	42	573
	%	16%	5%	17%	14%	6%	24%	1%	12%	7%	100%
Courses	#	266	44	259	177	55	409	6	133	88	1,437
	%	19%	3%	18%	12%	4%	28%	0%	9%	6%	100%
Surveys	#	247	43	254	168	55	367	6	133	59	1,332
	%	19%	3%	19%	13%	4%	28%	0%	10%	4%	100%
Enrolment	#	7,545	875	7,269	2,721	1,839	8,656	154	2,182	876	32,117
	%	23%	3%	23%	8%	6%	27%	0%	7%	3%	100%

Considerations for Administration

Several considerations guided the inclusion and administration process. In addition to following guiding documents, centralizing course evaluations included incorporating existing processes of some academic areas while introducing a completely new process in other areas. Specifically:

- [Student Course Evaluations - Principles and Procedures](#) approved by the Teaching and Learning Committee (formerly The Instructional Development and Support Committee (IDSC)) and presented to Senate (January 23rd, 2019)
- Memorandum of Settlement between TRU and TRUFA (July 21st, 2015)
- Custom surveys: Law, Science, English as a Second Language, Education and Skills Training Program, Nursing practice and lab practice section types, Biological Sciences labs, Animal Health Technology Distance courses

- Student confidentiality – course evaluations with less than 5 responses cannot be viewed, as is consistent with the practice of BCStats and current interpretation of the BC Statistics Act (BC Ministry of Technology, Innovation and Citizens’ Services)

Figure 4. Criteria for Inclusion or Exclusion

Criteria for Inclusion
-Lecture or combined section type
-Primary section
-Nursing practice or lab practice section type
-Science lab section type
-Course ending within, or attached to, winter 2022
-Campus Kamloops and Williams Lake
-Trades and Technology courses
Criteria for Exclusion
-Seminar, lab (excluding Science labs), field, practicum, thesis, directed studies, exchange, co-op work or PLAR section types
-Non-graded support sections
-Courses not ending in, or attached to, winter 2022
-Open Learning courses
-Course section numbers designating BC Campus
-Continuing education courses

After proposed course inclusion lists were prepared based on the standard criteria for evaluation (see Figure 4 for criteria for inclusion or exclusion), IPE sent a list of courses to each dean’s office in Kamloops (and the Williams Lake campus coordinator) on February 10th, with a request for response by February 25th.

After the list of courses was finalized, a notification email was sent from IPE on March 7th to each faculty member included in the administration. The email detailed which of the individual’s courses were included, and briefly explained the evaluation process (including contact information for IPE and the Centre for Excellence in Learning and Teaching (CELT) and a link to the [FAQ web page](#)). Given that Williams Lake campus has moved away from the block course delivery in fall 2020, course evaluation administration, data validation, and reporting were aligned with the Kamloops campus course evaluation timeline.

To accommodate continuous-entry Trades courses, course lists and surveys were prepared each month in anticipation of the following month. The lists were sent directly to the Trades chairs. Data validation and reporting was completed in March 2022 for evaluations that took place in January and February, and in May 2022 for evaluations that took place in March and April.

Administration

Distribution of Survey Links

As detailed under the box to the right, Survey Response Data Integrity: Implementation, most course survey links were made available to students through their myTRU portals. This protocol was chosen in response to a specific request from the TRU Students' Union (TRUSU). IPE prepared a data file containing the survey link and course detail (faculty name, CRN, etc.), which was then posted to the Student Course Evaluation myTRU channel by an IPE software analyst. The channel was populated with data from the survey link file according to each students' current course registrations.

IPE provided the main Kamloops file of survey links and course detail to the IPE software analyst for posting to student myTRU portals on March 25th; after this deadline, changes to the course lists were accommodated manually and links were provided directly to faculty members.

IPE supported the manual distribution of several course evaluations due to any of the following reasons:

- requests for changes submitted after the deadline,
- course sections running outside of the regular schedule,
- course sections where there was a mismatch between the section students were registered in and were taught in,
- students not registered in the course section,
- continuous entry course sections, or
- faculty requesting the survey link.

In total, 89% of all survey links were distributed via myTRU:

- 1,186 links distributed via myTRU (94% Kamloops, 80% Williams Lake),
- 146 links distributed by email directly to faculty members (6% Kamloops, 20% Williams Lake, 100% Trades).

Distribution of Passwords

As detailed under Survey Response Data Integrity: Implementation, each course survey link was assigned a unique password. The passwords were randomly generated using Norton IdentitySafe and were programmed into each survey. The passwords were individually distributed to faculty members using their official TRU email addresses.

Survey Response Data Integrity: Implementation

Ensuring the highest possible survey participation rates was balanced with the need to ensure the highest possible integrity of survey data. To this end, the following protocols were followed for all surveys (see exclusions below):

Students were required to sign in to their secure myTRU accounts in order to access the survey links.

Survey links were made available to students with a current registration in the course section.

Each survey was protected with a unique password.

The password was provided to the faculty member just prior to the survey administration period; in most cases (89%), faculty members were not provided with the link to the actual survey.

Faculty members were provided with a direct phone number to contact IPE for technical questions during the evaluation period.

Exceptions to the above protocols were rare and included course sections that required evaluation before the myTRU implementation, course sections that were included after the IPE deadlines, or a few rare instances of technical difficulty.

Each faculty member received one email with password per course section. Most passwords were emailed to faculty members on March 23rd.

Kamloops Timeline

Faculty members chose the date that they opened their course evaluation survey during the last three weeks (or equivalent) of their classes. Surveys were opened when the faculty member chose to provide the unique password to students. In Kamloops, most surveys were opened toward the end of the three-week period, with 69% opened in the two last weeks (Figure 5). Twenty six percent of the surveys were opened during the first week. Figure 6 shows that 10% of surveys were opened on a Friday, with the majority of the responses received between Monday and Thursday.

Figure 5. Kamloops surveys opened by week – Winter 2022

	# of Surveys Opened	% of Surveys Opened	# of Responses Received	% of Responses Received
Early (before March 28th)	48	4%	454	3%
Week 1 (March 28th - April 3rd)	301	26%	4,022	28%
Week 2 (April 4th - April 10th)	413	36%	5,343	38%
Week 3 (April 11th onwards)	380	33%	4,313	31%
Total	1,142	100%	14,132	100%

Figure 6. Kamloops surveys opened by weekday – Winter 2022

	# of Surveys Opened	% of Surveys Opened	# of Responses Received	% of Responses Received
Sunday	7	1%	49	0%
Monday	247	22%	3,562	25%
Tuesday	278	24%	3,414	24%
Wednesday	268	23%	3,448	24%
Thursday	217	19%	2,397	17%
Friday	114	10%	1,210	9%
Saturday	11	1%	52	0%
Total	1,142	100%	14,132	100%

Data Cleaning

Survey Response Data Validation

To ensure the highest possible quality of response data and to encourage buy-in from all stakeholders, each individual survey response underwent several validity checks. Primarily:

1. The student was registered in the course.
2. The student submitted a single response.
3. The response was received within 48 hours of the survey opening.

Course evaluations continued to be administered as per the regular process with the majority of on-campus courses being taught in-person for the second semester since the beginning of the COVID-19 pandemic in winter 2020. Once all responses were collected, IPE analysed the responses to determine the percent of responses submitted outside of the 48-hour window (late responses), how many course evaluations were affected by late responses, and how excluding the late responses would affect the response rate. Similarly, to the previous fall course evaluation administration, these numbers were provided to TRU to consult with TRUFA on whether to include the late responses as an exception for this administration due to the pandemic. Due to the significant impact that the late responses had on the response rate, TRUFA made the decision to include late responses for this winter administration.

For a more detailed process see the Responses Validation Process chart in Appendix B.

Student TID

After students gain entry to the survey with the unique course password, the survey instrument requires them to provide their TID. IPE programmed a validation mask that required the student to enter a 9-character ID (starting with "T") before they could proceed with the survey.

Please provide your TID

This information will be used only to track survey completion and will not be shared with your instructor.
(example: T12345678)

Please use your 9-character TID

TID error message

The student TID is used to check that the respondent is enrolled in the course section for which they have completed a survey. This check is redundant to the requirement that most students access the survey through myTRU. It is also used to check for duplicate responses.

Survey Response Data Integrity: Validation

Ensuring that only registered students in each course completed the survey is a top priority. To guarantee the reliability of response data:

Students were required to provide their TID before completing the survey.

Each individual response TID was compared with the registrations for that course; only responses from registered students were validated.

In the case of mismatches between respondent TID and course registration, the records were checked manually prior to deletion.

Only the first completed response for each student in each course was retained; duplicate responses were manually examined and deleted.

As an exception, responses submitted outside of the 48-hour window period were included for the winter 2022 administration.

Where possible, invalid student TIDs were automatically repaired by changing the letter 'o' to '0' and by adding 'T' and preceding '0'.*

Where specifically advised, obsolete '9-IDs' were manually corrected.

* Due to the large volume of responses, these corrections were accomplished with an automatic script.

Duplicate Responses

Responses were determined to be duplicates if they had the same student TID in a course section. The first completed response was retained.

48 Hour Response Window

The exact time stamp (hours, minutes) of the first valid response to a given course section survey determined the opening of the 48-hour response window. The time stamp on each subsequent submission for that course section was compared to the first-time stamp; responses that were received more than 48 hours (2,880 minutes) after the first time stamp were considered invalid. However, an exception was made for the winter 2022 course evaluation administration due to a significant number of responses still being submitted more than 48 hours after the first submitted response and the impact this had on the response rates. As a result, responses received outside of the 48-hour window were included in the reporting.

All School of Nursing practice courses and Animal Health Technology distance courses were excluded from this validity check and will continue to be moving forward.

Time to Complete Survey

The majority of the surveys were completed within an hour, with 89% of surveys completed within 10 minutes or less. Compared to winter 2021, there was a slight increase in percentage of surveys completed within 10 minutes or less. The completion time was calculated in minutes, from the time each respondent opened their survey to when they submitted it (Figure 7).

Figure 7. Survey completion time - Institutional

	Winter 2020	Winter 2021	Winter 2022
10 minutes or less	86%	83%	89%
11 to 20 minutes	9%	11%	7%
21 to 30 minutes	2%	2%	1%
1 hour +	3%	4%	3%

Law, Science, English as a Second Language, Education and Skills Training Program, Nursing theory, practice and lab practice section types, Biological Sciences labs, Animal Health Technology Distance courses were evaluated using custom survey instruments. The completion times for each questionnaire are available in Appendix C.

Time to Submit after Survey Open

Overall, 28% of surveys had responses submitted after the 48-hour window (late responses), which is a decrease of 21% from winter 2021 (49%) and a decrease of 31% when compared to winter 2020 (59%). Of the 352 surveys that had responses submitted after 48 hours, 53% had one late response, 34% had two or three late responses, and 13% of surveys had four or more late responses (Figure 9).

Figure 8. Surveys with responses submitted after the 48-hour window

	Winter 2020			Winter 2021			Winter 2022		
	Kamloops	Trades & Technology	Williams Lake	Kamloops	Trades & Technology	Williams Lake	Kamloops	Trades & Technology	Williams Lake
# of surveys that received responses outside of the 48-hour window	746	9	15	582	19	10	341	9	2
% of surveys that received responses outside of the 48-hour window	63%	17%	27%	50%	40%	29%	30%	18%	4%
# of responses over 48-hour window	2,176	13	19	1,460	31	21	687	10	4
% of responses over 48-hour window	21%	2%	4%	14%	8%	8%	5%	2%	1%

Figure 9. Surveys with late responses - Institutional, Winter 2022

	1 late response	2 or 3 late responses	4 or more late responses	Total
# of surveys that received responses outside of the 48-hour window	188	119	45	352
% of surveys that received responses outside of the 48-hour window	53%	34%	13%	100%
# of responses over 48-hour window	188	267	246	701
% of responses over 48-hour window	27%	38%	35%	100%

In light of the significant increase in number of responses received outside of the 48-hour window, TRUFA decided to make an exception for winter 2022 course evaluation administration and include these responses in faculty reports.

Language Screening

Starting in fall 2018, open ended responses were screened electronically for the presence of harassing or defamatory language. Student comments that were identified to contain any of the 467 predetermined harassing or defamatory words were flagged and provided to CELT for review to determine if the comment should be removed. Comments that were considered defamatory based on protected characteristics contained within the [BC Human Rights Code](#) were removed from the final reports. There were no harassing or defamatory student comments identified to be removed from winter 2022 responses.

Data Cleaning Summary

A total of 15,488 responses were received during winter 2022 course evaluations which is an increase of 40% from winter 2021 (11,063 responses). Of those responses, 347 (2%) were from students who were not enrolled in the course that they evaluated, 268 (2%) were duplicate student responses, and 701 (5%) were received after 48 hours of the survey opening. The remaining total number of valid student responses was 14,873 which includes responses received over the 48-hour window.

Figure 10. Response validation summary by campus – Winter 2022

	Total Responses (not cleaned)	# of Not Registered	Not Registered Percent	# of Duplicate TID	Duplicate TID Percent	# of Over 48-hour Window Responses	% of Over 48-hour Window Responses	Total Valid Responses (cleaned)
Kamloops	14,671	290	2.0%	249	1.7%	687	5%	14,132
Williams Lake	307	16	5.2%	4	1.3%	4	1%	287
Trades & Technology	510	41	8.0%	15	2.9%	10	2%	454
Total	15,488	347	2.2%	268	1.7%	701	5%	14,873

Reporting

Overall, 93% (1,238) of the prepared surveys were administered in winter 2022 (Figure 11). The largest decrease in participation rate was observed in Williams Lake.

Figure 11. Survey participation rates – Winter 2020, Winter 2021, Winter 2022

		Winter 2020	Winter 2021	Winter 2022
Kamloops	Surveys Administered	88%	92%	94%
	Surveys Not Administered	12%	8%	6%
Williams Lake	Surveys Administered	66%	85%	78%
	Surveys Not Administered	34%	15%	22%
Trades & Technology	Surveys Administered	83%	75%	85%
	Surveys Not Administered	17%	25%	15%
Total Surveys Prepared		100%	100%	100%

It is important to note that these participation rates measure participation in the survey administration only (not response rates). Participation rates varied by faculty and school, ranging from 96% participation in the Bob Gaglardi School of Business and Economics, to 85% participation in the School of Trades and Technology (Figure 12). The participation rates for winter 2022 course evaluation administration across most faculties and schools have remained on par with winter 2020 and winter 2021 results.

For participation rates by department, see Appendix A – Participation and Response Rates by Department.

Figure 12. Survey participation rate by division - Institutional

		Surveys Administered	Surveys Not Administered
Bob Gaglardi School of Business and Economics	Winter 2020	89%	11%
	Winter 2021	89%	11%
	Winter 2022	96%	4%
Faculty of Adventure, Culinary Arts and Tourism	Winter 2020	81%	19%
	Winter 2021	88%	12%
	Winter 2022	98%	2%
Faculty of Arts	Winter 2020	88%	12%
	Winter 2021	93%	7%
	Winter 2022	95%	5%
Faculty of Science	Winter 2020	86%	14%
	Winter 2021	91%	9%
	Winter 2022	93%	7%
School of Nursing	Winter 2020	89%	11%
	Winter 2021	91%	9%
	Winter 2022	89%	11%
Faculty of Law	Winter 2020	71%	29%
	Winter 2021	88%	12%
	Winter 2022	98%	2%
Faculty of Education and Social Work	Winter 2020	87%	13%
	Winter 2021	96%	4%
	Winter 2022	87%	13%
Faculty of Student Development	Winter 2020	86%	14%
	Winter 2021	100%	
	Winter 2022	83%	17%
School of Trades and Technology	Winter 2020	83%	17%
	Winter 2021	75%	25%
	Winter 2022	85%	15%

Response Rates

The average institutional response rate (of participating surveys) was 49%, compared to 33% in winter 2021 and 39% in winter 2020. Aggregate response rates ranged from 67% in School of Nursing (Williams Lake campus) to 41% in the Bob Gaglardi School of Business and Economics and Faculty of Student Development (Kamloops campus) (Figure 14).

Figure 13. Historical response rates – Winter 2020, Winter 2021, Winter 2022

	Winter 2020		Winter 2021		Winter 2022	
	Responses Received	Response Rate	Responses Received	Response Rate	Responses Received	Response Rate
Kamloops	9,884	31%	9,991	32%	14,132	48%
Williams Lake	413	57%	259	55%	287	59%
Trades & Technology	509	61%	333	48%	454	61%
Total	10,806	32%	10,583	33%	14,873	49%

Figure 14. Response rates by division – Winter 2022

		Surveys #	Responses Received	Response Rate
Kamloops	Bob Gaglardi School of Business and Economi..	237	3,026	41%
	Faculty of Adventure, Culinary Arts and Tourism	42	428	50%
	Faculty of Arts	236	3,018	44%
	Faculty of Education and Social Work	139	1,439	62%
	Faculty of Law	54	759	42%
	Faculty of Science	335	4,342	53%
	Faculty of Student Development	5	63	41%
	School of Nursing	95	1,057	61%
Williams Lake	Faculty of Arts	6	32	46%
	Faculty of Education and Social Work	7	35	43%
	Faculty of Science	8	25	61%
	School of Nursing	24	195	67%
Trades & Technology	School of Trades and Technology	50	454	61%
Total		1,238	14,873	49%

Course Evaluation Reports

As directed by Senate, IPE produced the following aggregated course evaluation reports made available on the CELT Student Course Evaluations website or by request to IPE:

1. Institutional report (all responses, four Senate questions only)
2. Faculty and School reports (all responses, all numeric questions)
3. Department reports (all responses, all numeric questions)

In addition to the above aggregate reports, faculty and chairs were given access to interactive dashboard reports.

Dashboard Reports

The faculty and chair reports offer enhanced reporting capabilities through interactive dashboards, such as secure access through the TRUEmployee portal, access to all historical responses since the start of online course evaluations (winter 2016), ability to aggregate and filter data, view trends over time and set institutional, divisional, or departmental benchmarks. Starting in May 2019, chairs and faculty were able to download and pdf their own course evaluation reports.

Distribution

IPE published the course evaluation dashboard reports to faculty and chairs on May 9th, 2022. Faculty were required to have submitted final grades before they were able to access their course evaluation results. The deadline for grade submission for regular semester courses was May 6th, 2022. As of May

13th, after the second grades check took place, all but five evaluated courses had 90% or greater of their final grades in Banner.

Appendix A – Participation and Response Rates by Department

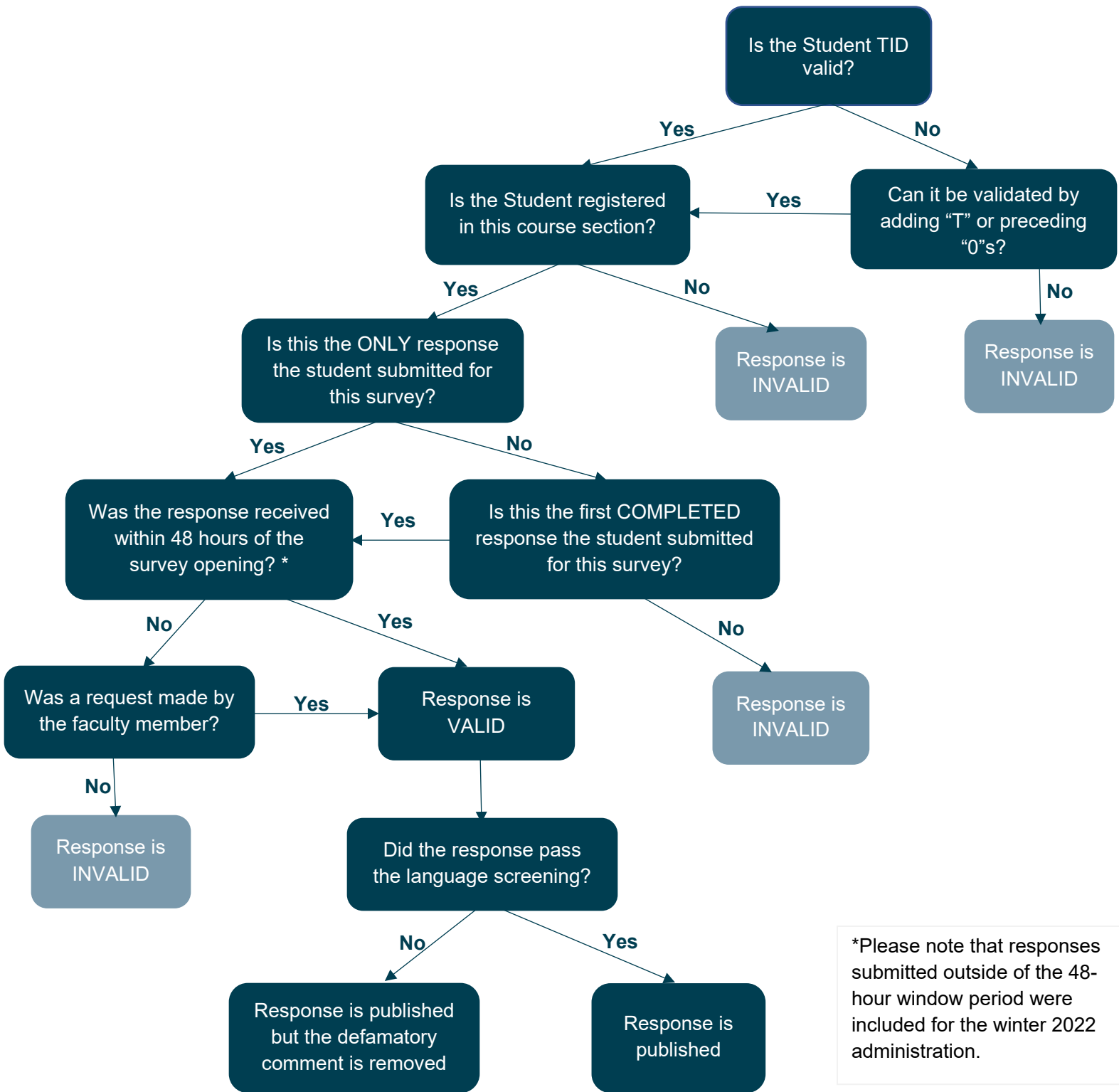
Participation Rates by Department

Division	Department	Surveys Administered		Surveys Not Administered		Total Surveys Prepared	
		#	%	#	%	#	%
Bob Gagliardi School of Business and Economics	Economics	54	89%	7	11%	61	100%
	Accounting and Finance	58	100%			58	100%
	Human Enterprise and Innovation	47	96%	2	4%	49	100%
	Management, Intl Bus, Info, Supply Chain	44	98%	1	2%	45	100%
	Marketing	34	100%			34	100%
Faculty of Adventure, Culinary Arts and Tourism	Adventure Studies	8	89%	1	11%	9	100%
	Tourism Management	32	100%			32	100%
	Culinary Arts and Retail Meat	2	100%			2	100%
Faculty of Arts	Psychology	31	100%			31	100%
	Sociology and Anthropology	33	100%			33	100%
	Visual and Performing Arts	29	97%	1	3%	30	100%
	English and Modern Languages	63	94%	4	6%	67	100%
	Geography and Environmental Studies	13	93%	1	7%	14	100%
	Journalism, Comm and New Media	44	90%	5	10%	49	100%
	Philosophy, History and Politics	29	97%	1	3%	30	100%
Faculty of Education and Social Work	Social Work and Human Service	33	85%	6	15%	39	100%
	Education	60	95%	3	5%	63	100%
	English Language Learning and Teaching	19	73%	7	27%	26	100%
	University and Employment Prep	34	85%	6	15%	40	100%
Faculty of Law	Law	54	98%	1	2%	55	100%
Faculty of Science	Computing Science	30	86%	5	14%	35	100%
	Mathematics and Statistics	45	98%	1	2%	46	100%
	Agricultural Related	45	100%			45	100%
	Biological Sciences	53	98%	1	2%	54	100%
	Physical Sciences	63	100%			63	100%
	Natural Resource Sciences	32	89%	4	11%	36	100%
	Allied Health	47	81%	11	19%	58	100%
	Architectural and Engineering Technology	9	82%	2	18%	11	100%
	Engineering and Applied Science	19	100%			19	100%
Faculty of Student Development	Career and Experiential Learning	4	100%			4	100%
	Counselling Acad Sup and Assess	1	50%	1	50%	2	100%
School of Nursing	Nursing	88	95%	5	5%	93	100%
	Health Care Assistant	31	78%	9	23%	40	100%
School of Trades and Technology	Construction Trades	26	76%	8	24%	34	100%
	Mechanical and Welding Trades	24	96%	1	4%	25	100%
Total		1,238	93%	94	7%	1,332	100%

Response Rates by Department

Division	Department	Surveys #	Responses Received	Response Rate
Bob Gaglardi School of Business and Economics	Accounting and Finance	58	768	41%
	Economics	54	702	43%
	Human Enterprise and Innovation	47	661	47%
	Management, Intl Bus, Info, Supply Chain	44	429	31%
	Marketing	34	466	43%
Faculty of Adventure, Culinary Arts and Tourism	Adventure Studies	8	61	37%
	Culinary Arts and Retail Meat	2	5	63%
	Tourism Management	32	362	53%
Faculty of Arts	English and Modern Languages	63	737	46%
	Geography and Environmental Studies	13	139	38%
	Journalism, Comm and New Media	44	566	42%
	Philosophy, History and Politics	29	443	46%
	Psychology	31	480	41%
	Sociology and Anthropology	33	464	43%
	Visual and Performing Arts	29	221	55%
Faculty of Education and Social Work	Education	60	784	68%
	English Language Learning and Teaching	19	148	56%
	Social Work and Human Service	33	303	51%
	University and Employment Prep	34	239	61%
Faculty of Law	Law	54	759	42%
Faculty of Science	Agricultural Related	45	491	63%
	Allied Health	47	482	35%
	Architectural and Engineering Technology	9	108	68%
	Biological Sciences	53	842	58%
	Computing Science	30	378	41%
	Engineering and Applied Science	19	132	57%
	Mathematics and Statistics	45	635	51%
	Natural Resource Sciences	32	481	58%
	Physical Sciences	63	818	67%
Faculty of Student Development	Career and Experiential Learning	4	50	36%
	Counselling Acad Sup and Assess	1	13	87%
School of Nursing	Health Care Assistant	31	314	61%
	Nursing	88	938	63%
School of Trades and Technology	Construction Trades	26	230	53%
	Mechanical and Welding Trades	24	224	71%
Total		1,238	14,873	49%

Appendix B – Response Validation Process



*Please note that responses submitted outside of the 48-hour window period were included for the winter 2022 administration.

Appendix C – Custom Survey Instrument: Completion Time

		Winter 2020	Winter 2021	Winter 2022
Animal Health Technology Distance (ANHD)	10 minutes or less	67%	85%	92%
	11 to 20 minutes	17%	8%	4%
	21 to 30 minutes		4%	
	1 hour +	17%	4%	4%
Biology Lab	10 minutes or less	84%	76%	87%
	11 to 20 minutes	11%	19%	10%
	21 to 30 minutes	4%	1%	1%
	1 hour +	2%	4%	1%
Education and Skills Training Program (ESTR)	10 minutes or less	98%	97%	97%
	11 to 20 minutes	1%	1%	1%
	21 to 30 minutes		1%	
	1 hour +	1%	1%	1%
English as a Second/Additional Language (ESAL)	10 minutes or less	77%	62%	72%
	11 to 20 minutes	14%	19%	22%
	21 to 30 minutes	4%	6%	2%
	1 hour +	5%	13%	4%
General	10 minutes or less	89%	86%	92%
	11 to 20 minutes	7%	9%	5%
	21 to 30 minutes	1%	1%	1%
	1 hour +	3%	4%	2%
Law	10 minutes or less	82%	79%	78%
	11 to 20 minutes	13%	13%	14%
	21 to 30 minutes	2%	3%	2%
	1 hour +	3%	6%	5%
Nursing Lab Practice	10 minutes or less	93%	95%	92%
	11 to 20 minutes	3%	2%	4%
	21 to 30 minutes	3%	1%	1%
	1 hour +	1%	3%	3%
Nursing Practice	10 minutes or less	82%	87%	76%
	11 to 20 minutes	13%	9%	16%
	21 to 30 minutes	3%	2%	3%
	1 hour +	2%	2%	5%
Science	10 minutes or less	78%	77%	87%
	11 to 20 minutes	14%	15%	10%
	21 to 30 minutes	3%	3%	1%
	1 hour +	4%	4%	3%