



**Dear colleagues,**

We hope you enjoyed a refreshing break and we look forward to working with you in 2021. The January newsletter contains information about several upcoming events including a [workshop with Conversation Canada editor Scott White](#), as well as a [Canada Research Chair candidate presentation](#) which we encourage you to attend. We want to acknowledge the efforts of faculty and students who continued their research in spite of the pandemic and thank all those who continued to support their colleagues by adjudicating and peer reviewing during these challenging times. You are the reason we have such a strong research culture, and we value your support!

## [Excellence Awards: Nominations now accepted](#)

Each year, TRU celebrates faculty who have demonstrated excellence in research and mentorship. Please consider nominating an exceptional colleague for one of the following awards. **Nomination packages are due Feb. 15.**

- **Excellence in Research and Scholarship:** Recognizes excellence in research, scholarly activity or the production of creative works over a sustained period of time that represents a significant contribution to the field of inquiry
- **Distinguished Scholar Award:** Recognizes the highest achievement in scholarship, achieved over a career. This award recognizes scholars whose research has had a significant impact, who have established an international reputation of excellence, who have made a significant contribution to training highly-qualified personnel, and who have enhanced the reputation of TRU through research
- **Undergraduate Research Mentor Award:** Recognizes demonstrated excellence in mentoring undergraduate researchers over a sustained period of time

- **Graduate Research Mentor Award:** Recognizes demonstrated excellence mentoring graduate student researchers over a sustained period of time

## Worth 1000 Words: Research photo contest

We are once again about to launch [Worth 1000 Words: Research in Pictures](#). This competition is in its second year, and we are excited to see what you have been up to.



Make sure you follow us on [Facebook](#), [Twitter](#) and [Instagram](#) for complete contest details!

## Requests for Tk'emlups te Secwépemc

Should you wish to engage with Tk'emlups te Secwépemc in the course of your research, please send all TRU requests to [Tina Matthew](#) at the Office of Indigenous Education. The [Office of Indigenous Education website](#) has various resources and information about respectful community engagement. For general inquiries, email [ined@tru.ca](mailto:ined@tru.ca).

## COVID-19 research impacts

The Research Office is committed to providing up-to-date information designed to facilitate the continuation of faculty and student research during this global pandemic. [This website](#) will be updated regularly, and includes links to Tri-Agency pandemic response, information about research continuity planning, guidelines for research teams, travel awards, funding opportunities, and more. We advise you bookmark this page and check back regularly, as this situation is rapidly changing.

## Research initiatives & events

### Canada Research Chair candidate presentation

**When: Jan. 19, 9 - 9:30 am**

**Where: BlueJeans**

Dr. Juanita Bacsu presents: Improving Healthy Aging in Place for Rural Older Adults.

[Read more](#)

## Writing for the Conversation Canada: A workshop with Editor Scott White

**When: Jan. 21, noon - 1:30 pm**

**Where: MS Teams**

Faculty are encouraged to join Conversation Canada CEO and Editor-in-Chief Scott White for this virtual workshop.

RSVP to [Danna Bach](#) before Jan. 20 to receive a meeting invite.



[Read more](#)

## Tap into Research

We are thrilled with the response to our virtual [Tap into Research series](#). If you have missed any of the presentations, now is great time to catch up using our [YouTube playlist](#).



The Tap into Research/Gift of Learning virtual presentations provide an opportunity for your research to reach new audiences. For more information about developing a Tap into Research presentation, contact [Danna Bach](#).

## Rematriation of Indigenous women: Filmmakers and storytellers

**When: Feb. 5, 1 - 2:30 pm**

You are invited to participate in this webinar featuring guest speakers Dr. Dorothy Christian, Dr. Jules Arita Koostachin, and Doreen Manuel.

[Read more](#)



## Project Management for Grad Students

**When: Feb. 1 & 2, all day**

Mitacs is providing free, online workshops for graduate students in BC. In this workshop, students will use a customized project planning tool to reach their project deadlines with energy and time to spare.

[Read more](#)

## Presentation Skills for Grad Students

**When: Feb. 11, all day**

In this one-day course, theory is introduced in short bursts and participants spend the majority of time practicing their presentation skills while receiving immediate feedback. This session is ideal for graduate students planning to participate in the [3MT competition](#) this spring.

[Read more](#)

## Research News

### Student research continues during pandemic

Eleven student research projects were supported through TRU's flagship UREAP program, which provides \$6000 to students to conduct original research.

[Read more](#)



### Lepin investment in graduate education climbs

Eight TRU grad students received the \$6000 Ken Lepin Graduate Student Awards based on outstanding achievement in course work and research.

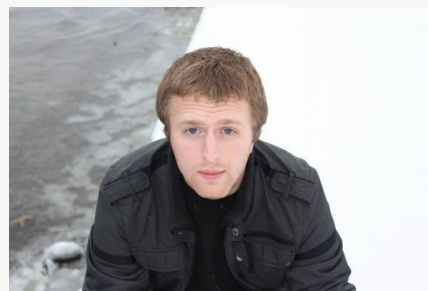
[Read more](#)



## Arts grad finds path through research

Arts grad Luke Kernan has turned his passion for research into a unique career path.

[Read more](#)



## Communicating research

### Send your images to Science Exposed

Eye-catching images from research projects across all fields of study can now be submitted to Science Exposed. The individuals or groups that most successfully combine creativity and science will be awarded a cash prize. The contest is hosted by NSERC and Acfas, and its goal is to foster a science culture in Canada by capturing vibrant research images that showcase the work of our talented research community.

## Share your expertise

Media is reaching out to TRU routinely, searching for experts to speak on a variety of issues. Please make yourself easy to find by joining the [Experts List](#). For more information, please reach out to [Danna Bach](#), or take a moment and [simply register online](#).

## Research in the media

### National Observer | The burning question: How to tackle air pollution and health threats from wood stoves?

Jan. 7 — TRU's Michael Mehta discusses why many rural residents' health is at significant risk due to high levels of airborne pollutants from wood-burning stoves.

[Read more](#)

### Prince George Citizen | Former PGRCC inmate's lawsuit over

## [solitary confinement certified as a class action](#)

Jan. 6 — Law faculty member Craig Jones provides context and fuller information in this story about a class action case involving solitary confinement in prison.

[Read more](#)

## [Kamloops This Week | \\$250,000 grant will help TRU researchers probe life and death of micro-organisms](#)

Dec. 17 — Supported by Genome BC, Lauchlan Fraser and Jonathan Van Hamme are leading research team to produce a more accurate measurement of the environmental DNA in microbial soil communities by eliminating relic DNA. This research is in partnership with Highland Valley Copper and Copper Mountain mines.

[Read more](#)

## [CFJC Today | TRU receives \\$750k donation to support Indigenous students](#)

Dec. 10 — BMO Financial Group is donating \$750,000 to TRU in support of Indigenous student researchers.

[Read more](#)

## [CBC Radio & ABC Digital Radio | Van Life](#)

Nov. 16 & Dec. — Angus Duff was interviewed by both [CBC Radio](#) and [ABC Digital Radio](#) about research that explores why some workers are opting to live in their vans.

## Funding news

### Tri-Agency News

1. Tri-Agency (CIHR, SSHRC, NSERC) and CFI has launched a new [Integrated Calendar of Funding Opportunities](#) of principal funding opportunities and their joint initiatives for researchers, graduate students and post-doctoral fellow. Please bookmark this.

2. New Frontiers in Research Fund has launched [interactive dashboard](#) that highlights key data on NFRF competitions to date, providing valuable insights into how the fund is being awarded to the research community.

## Seeking members for Indigenous Leadership Circle in Research

First Nations, Inuit and Métis Peoples are invited to submit expressions of interest to [participate in an interagency Indigenous Leadership Circle in Research](#). The Leadership Circle will advise the presidents of the three federal research funding agencies and the Canada Foundation for Innovation on the implementation of the Canada Research Coordinating Committee's [strategic plan](#) for strengthening Indigenous research capacity. **Application deadline is Jan. 15.**

## COVID-19 Research Impacts

For the most up-to-date- news on Tri-Agency response to COVID-19, please visit the following:

- [COVID-19 Impacts on SSHRC's Policies and Programs](#)
- [NSERC program information in relation to COVID-19](#)
- [CIHR: Coronavirus disease \(COVID-19\)](#)

## Funding opportunities (external)

A calendar for [COVID related research grants](#) has been created, and features sponsored research opportunities on the novel coronavirus.

- The internal deadline for all applications is **two weeks prior** to the listed deadline. This allows time to receive critical review, obtain support letters and appropriate institutional approval. Please contact [Anita Sharma](#) or [Megan Prins](#) at the earliest opportunity to receive extensive grant development support.

### CIHR

[Canadian Longitudinal Study on Aging](#)

**Deadline: Feb. 16**

The specific objectives of this funding opportunity are to support the:

1. Continued implementation of the approved CLSA protocol, including two waves of data collection for the tracking and comprehensive cohorts, analysis of a core set of biomarkers and continued optimization of participant retention for a

robust longitudinal cohort;

2. Ongoing optimization of systems and mechanisms, including a communication and outreach strategy (that includes a data promotion plan) that will ensure responsible and timely access to high quality CLSA data and biospecimens, while meeting ethical standards and protecting the privacy of CLSA participants;

3. Continued evolution of the CLSA governance structure and business model to ensure long-term stability and sustainability of the platform and its related operations. This should include governance and decision-making, management and operating plans, succession planning, and strategies for partnership and collaboration that continue to position the platform as a world-class scientific resource.

### [Spring Project Grant](#)

**Deadlines:** March 4 (spring registration); April 1 (full application)

This program is designed to capture ideas with the greatest potential for important advances in fundamental or applied health-related knowledge, health care, health systems, and/or health outcomes. The best ideas may stem from new, incremental, innovative, and/or high-risk lines of inquiry or knowledge translation approaches. Please also see [Priority Announcements](#) that offer additional sources of funding for highly rated applications.

### [Human Frontier Science Program: Pre-announcement](#)

**Deadlines:** March 18 (NOI); March 30 (full application)

**Award value:** Depends on team composition

These grants support innovative basic research into fundamental biological problems with emphasis placed on novel and interdisciplinary approaches that involve scientific exchanges across national and disciplinary boundaries (see [guidelines](#)). Participation of scientists from disciplines outside the traditional life sciences such as biophysics, chemistry, computational biology, computer science, engineering, mathematics, nanoscience or physics is recommended because such collaborations have open up new approaches for understanding the complex structures and regulatory networks that characterize living organisms, their evolution and interactions. Grants are provided to teams of scientists from different countries who wish to combine their expertise in innovative approaches to questions that could not be answered by individual laboratories.

### [Team Grant: Food Security and Climate Change in the Canadian North](#)



**DEADLINE CHANGE: LOI:** April 27 (successful LOIs will be awarded \$25,000 to develop a full application)

**Award amount:** Up to 1.5 million over 4 years

The goal of this initiative is to support multidisciplinary teams of researchers, knowledge users and/or partners to work together to address food security and climate change in the North.

### [Team Grant - Diabetes Prevention and Treatment in Indigenous Communities: Resilience and Wellness](#)

**Deadline:** May 26 (LOI); successful LOIs receive up to \$35,000 to develop a full application; July 7 (full application)

**Award value:** Up to \$2 million

This competition will support Indigenous-led and community-driven research to define and integrate models of resilience and wellness into diabetes prevention and/or treatment approaches among First Nations, Inuit and Métis Peoples.

### [Team Grant – Indigenous Gender and Wellness](#)

**Deadlines:** June 22 (registration); July 29 (full application). *Note: At least one team member must have attended the [Idea Fair and Learning Circle](#) in June 2019*

**Award value:** Up to \$500,000

Gender plays an important, but often overlooked role in Indigenous wellness. Indigenous concepts of gender have been negatively affected by colonization and the effects of gender on wellness have often been overlooked by research. This will provide funding for Indigenous-led teams to implement their ideas through research and action-oriented, community-based participatory projects that will improve wellness for Indigenous Peoples from a gendered perspective.

## SSHRC

### [Connection Grants](#)

**Deadlines:** Feb. 1, May 1, Aug. 1, Nov. 1

**Award amount:** \$7,000 to \$25,000 (events); up to \$50,000 (outreach activities)

Connection grants support events and outreach activities geared toward short-term, targeted knowledge mobilization initiatives. Events and outreach activities funded by a Connection Grant may often serve as a first step toward more comprehensive and longer-term projects potentially eligible for funding through other SSHRC funding opportunities listed in SSHRC's Funding search tool.

### [SSHRC Insight Development Grants](#)

**Deadline:** Feb. 2

**Value:** \$7,000 to \$75,000/two years

***Portal now open!***

Insight Development Grants (IDG) enable the development of new research questions, as well as experimentation with new methods, theoretical approaches and/or ideas. IDGs foster research in its initial stages, but are not intended to support large-scale initiatives. Funding is available to both emerging and established scholars and 50% of the budget is reserved for emerging scholars.

### Partnership Engage Grants

**Deadlines:** March 15, June 15, Sept. 15

**Award amount:** \$7,000 to \$25,000

These grants provide short-term and timely support for partnered research activities that will inform decision-making at a single partner organization from the public, private or not-for-profit sector. The partnerships supported through these grants respond to immediate needs and time constraints facing organizations in non-academic sectors.

## NSERC

### NSERC Idea to Innovation (I2I) Grants

**Deadlines:** March 30, June 22, Sept. 28

**Award value:** \$15,000-\$350,000\*

*\*Applicants must contact [Lincoln Smith](#) to discuss partnerships, IP, and research agreements prior to applying for this grant*

The Idea to Innovation (I2I) grants will accelerate the pre-competitive development of promising technology originating from the university and college sector and promote its transfer to a new or established Canadian company. The I2I grants provide funding to college and university faculty members to support research and development projects with recognized technology transfer potential. This is achieved through defined phases by providing crucial assistance in the early stages of technology validation and market connection.

### Alliance Grants

**Deadlines:** ongoing

NSERC is pleased to announce the opening of the next phases of [Alliance grants](#). Alliance grants are now open for [Option 1](#) applications requesting over \$20,000 annually from NSERC, and [Option 2](#) applications requesting support

for up to 90% or 100% of the costs of the project are now open. Alliance grants encourage university researchers to collaborate with partner organizations, which can be from the private, public or not-for-profit sectors. Please also see [slide deck](#) from NSERC Research and Innovation Development Officer, Pam Giberson's presentation at TRU. And an Alliance Grant application "[Top Tips](#)" document.

## Government of BC

### [WorkSafe BC: Research Grant Competition Innovation at Work](#)

**Deadlines:** Feb. 12 (full application)

**Award value:** \$50,000

These funds support small-scale research projects that lead to the development of practical solutions to address workplace health and safety issues. Research topics should align with WorkSafeBC [research priorities](#).

## Government of Canada

### [AgriScience Program - Projects](#)

**Deadline:** open

**Award value:** varies

The AgriScience Program is a program under the Canadian Agricultural Partnership. The program aims to accelerate the pace of innovation by providing funding and support for pre-commercial science activities and cutting-edge research that benefits the agriculture and agri-food sector and Canadians.

### [Heritage Canada: - Community Support, Multiculturalism, and Anti-Racism Initiatives Program](#)

**Deadline:** Jan. 12 (projects); Continuous (events)

These programs support the mandate of the Department of Canadian Heritage by building on Canada's strength as a diverse and inclusive society. The Program has three funding components: Events, Projects and Community Capacity Building. It also includes one separate initiative, the Paul Yuzyk Youth Initiative for Multiculturalism.

## Foundations

### [Bill and Melinda Gates Foundation and the International COVID-19 Data Alliance \(ICODA\) – Grand Challenges ICODEA COVID-19 Data Science](#)

**Deadline:** Jan. 19

**Award value:** \$100,000

Grand Challenges ICODA COVID-19 Data Science grant programme that will focus on addressing major questions about how to reduce the harm of COVID-19 and future pandemics. The programme aims to unite data and develop processes, analytical tools and infrastructure to achieve rapid scientific progress and impact.

[Canada Mortgage and Housing Cooperation – Housing Supply Challenge - Round 1](#)

**Deadline:** Jan. 20

The Housing Supply Challenge (HSC) invites citizens, stakeholders, and experts from across Canada to propose innovative solutions to the barriers that limit the creation of new housing. **Round 1 Challenge: The data driven round** invites applicants to submit data solutions or methodologies that improve the collection, sharing, analysis and integration, and/or presentation of data. The broad definition allows participants to determine the solution that best fits the needs of the identified problem. We want decision makers to use the solutions to provide and maintain needed housing supply. Solutions should help government agencies, policy makers, private or not-for-profit organizations, etc. have a real impact on housing supply at a macro or a local level.

[Bill and Melinda Gates Foundation – Grand Challenge – Smart Farming Innovations for Small Scale Producers](#)

**Deadline:** Feb. 25

**Award value:** Visit the link for information about Seed Grants and Scale-Up Grants

Smart Farming Innovations for Small-Scale Producers Request for Proposals (RFP) seeks Smart Farming solutions that leverage digital technology innovations that have the potential to drive positive impact for smallscale producer (SSP) entrepreneurs delivered through bundled farmer services and enabled by scalable digital and data platforms

[Inuit Nunangat Research Program \(INRP\) – Call for Proposals](#)

The (INRP) is an Inuit-led component of [North by North](#), a program operated by the ArcticNet Network of Centres of Excellence. In tandem with Inuit Tapiriit Kanatami's [implementation of the National Inuit Strategy on Research \(NISR\)](#), the INRP advances Inuit self-determination in research by creating space for Inuit to design research projects, develop partnerships to build capacity and strengthen the impact and effectiveness of Inuit Nunangat research for Inuit.

## Michael Smith Foundation for Health Research - Scholar Program

**Deadlines:** Feb. 8 (LOI); March 22 (full application)

This program identifies and develops outstanding BC health researchers who are within five years from the start of their first institutional appointment as an independent investigator, it helps researchers start and develop new programs of research, and it protects researchers' time to conduct research, develop an independent research career and attract additional research funding. [Partnership opportunities are available.](#)

## Michael Smith Foundation for Health Research – Research Trainee Program

**Deadlines:** Feb. 8 (LOI); March 29 (full application)

This program provides salary support for talented post-doctoral or health professional researchers and develops their careers in health research, it *Helps post-doctoral researchers increase their, and their labs', research productivity, and it prepares post-doctoral researchers for successful careers in research, biotech, health policy and more.* [Partnership opportunities are available.](#)

## Max Bell Foundation: Project Grants and Development Grants

**Deadline:** Ongoing

**Award amount:** \$10,000-\$200,000/ 1-3 years

**Project Grants** support clearly defined activities designed to achieve a specific objective that aligns with the Foundation's mission and criteria and that seek to support projects with a high likelihood of informing public policy and practice. Current program areas include: Health & Wellness; Education; the Environment.

**Development Grants** support organizations who wish to undertake short-term (typically 4 month) work that will better position them to succeed with larger projects (e.g., environmental scanning; background research; project planning; proposal development etc.). Development grants are described in more detail [here](#).

## Fellowships

### Mitacs Elevate, Postdoctoral Fellowship Winter 2020

**Deadline:** Jan. 13 (intent to apply and conflict of interest declaration); Feb. 19 (full application)

**Award value:** \$55,000 salary/stipend minimum

Mitacs Elevate is a postdoctoral fellowship with a customized research

management-training component. Elevate fellows progress through the program in a cohort, giving them cross-disciplinary networking and peer-learning opportunities they might not have otherwise in their careers. Over the two-year fellowship, Elevate fellows divide their time between their partner organization project and university-based research with their faculty supervisor.

### [The Banting Research Foundation Discovery Award](#)

**Deadline:** Jan. 25

**Award value:** \$25,000

This awards innovative health and biomedical research projects by outstanding new investigators at universities and research institutes in Canada who are within the first three years of their first academic appointment. The intent is to provide seed funding so that applicants are able to gather pilot data to enhance their competitiveness for other sources of funding.

### [Accelerate: Indigenous Initiative](#)

**Deadline:** Jan. 29

This initiative is part of Mitacs' [Accelerate Program](#), linking a student with a partnering organization on a research project co-developed by a faculty supervisor. This Indigenous call offers 75% of the matching funds if the student or the non-academic partner self-identifies as Indigenous.

*For additional assistance with Mitacs applications, contact [Jennifer Tedman-Jones](#).*

## Funding opportunities (internal)

### [The Thompson Rivers University Internal Research Fund](#)

**Deadline:** Jan. 15 annually

**Award amount:** \$3,000 - \$5,000.

A joint initiative of the Research and Graduate Studies office and the Office of the Provost and Vice-President Academic, this fund provides a maximum of \$100,000 annually to support research with the principal aim of helping faculty become more competitive for external funding and scaffolding faculty development, especially in terms of tenure and promotion. Completion of an IRF project should significantly widen the applicant's sphere of influence in terms of their research and scholarship. The IRF is a seed fund that is not intended to provide funding for major projects. *Those accepting IRF funding are expected to apply for complementary or future external funding support.* Terms

of Reference and Application Form can be found in [Romeo](#).

### [Research Accelerate Grants](#)

**Deadline:** Feb. 10

**Award value:** Up to \$3,500

Faculty who are actively engaged in developing Tri-Agency funding applications are encouraged to apply for this grant which is designed to support activities that will enhance grant proposals with expenditures directly related to the research. Activities may include completion of any preliminary work, literature review, student training, or any other appropriate activity that contributes to the development of the application. **Application form will be available in Romeo by Jan. 13.**

### [Research Partnership Accelerate Grants](#)

**Deadline:** Feb. 22

**Award value:** Up to \$7,500

These grants are designed to catalyze or accelerate the development of research partnerships and interdisciplinary collaborations to enhance Tri-Agency partnership and interdisciplinary grant applications. Those faculty who are actively engaged in fostering partnerships and collaborations with the outcome of developing applications for Tri-Agency funding competitions within the next 12 months are encouraged to apply. **Application form will be available in Romeo by Jan. 13.**

## Funding opportunities (students)

### [BC NEIHR Indigenous Graduate and Postdoctoral Funding](#)

**Deadline:** Jan. 15

**Award Value:** \$17,000 (masters)

Funded by the CIHR Institute of Indigenous Peoples' Health (IIPH), the BC NEIHR is one of nine Indigenous-led networks across Canada that support research leadership among Indigenous (*First Nations, Métis and Inuit*) communities, collectives and organizations (ICCOs). The primary objective is to increase the number of ICCOs and Indigenous researchers (*students and investigators*) who hold health research funds.

### [NSERC Undergraduate Student Research Award Program \(USRA\)](#)

**Deadline:** Jan. 22

**Award amount:** \$7,500 (minimum)

The award amount has increased for 2021. This award provides funds for undergraduate students in the natural sciences and engineering to engage in research over a 16-week period over the summer (May to August). Several adjustments have been made to the application process, which can be read in full detail at [tru.ca/myresearch](https://tru.ca/myresearch).

**Undergraduate Research Experience Award Program (UREAP)**

**Deadline: Feb. 28**

**Award amount: \$6,000**

The UREAP is a scholarship designed to fund students to conduct their own original research under the supervision of a faculty mentor. Projects funded by UREAP may also be eligible for an additional operating grant of up to \$1,000 to cover expenses such as supplies, or knowledge dissemination.

## Knowledge mobilization

### Published books, chapters & articles

Brydges, T., Retamal, M., & Hanlon, M. (2020). Will COVID-19 support the transition to a more sustainable fashion industry? *Sustainability: Science, Practice and Policy*, 16(1), 298–308. <https://doi.org/10.1080/15487733.2020.1829848>

\*Catenza, C. J., \*Farooq, A., \*Shubear, N. S., & Donkor, K. K. (2021). A targeted review on fate, occurrence, risk and health implications of bisphenol analogues. *Chemosphere*, 268, 129273. <https://doi.org/10.1016/j.chemosphere.2020.129273>

Denham, T. (2020). My work in academic integrity 2020: Not all I hoped it would be. *Canadian Perspectives on Academic Integrity, Vol. 3 No. 2*, 14-15 Pages. <https://doi.org/10.11575/CPAI.V3I2.71641>

Dhand, R., Szigeti, A., Kotob, M., Kennedy, M., & Ye, R. (2020). Litigating in the Time of Coronavirus: Mental Health Tribunals' Response to COVID-19. *Windsor Yearbook of Access to Justice*, 37, 132–160. <https://doi.org/10.22329/wyaj.v37i0.6565>

Di Nota, P. M., Stoliker, B. E., Vaughan, A. D., Andersen, J. P., & Anderson, G. S. (2020). Stress and memory: A systematic state-of-the-art review with



evidence-gathering recommendations for police. *Policing: An International Journal, ahead-of-print*(ahead-of-print). <https://doi.org/10.1108/PIJPSM-06-2020-0093>

**Duff, A. J., & Rankin, S. B.** (2020). Exploring flexible home arrangements – an interview study of workers who live in vans. *Career Development International, 25*(7), 747–761. <https://doi.org/10.1108/CDI-02-2020-0029>

**Hashim, H. A., & Eltoukhy, A. E. E.** (n.d.). *Nonlinear Filter for Simultaneous Localization and Mapping on a Matrix Lie Group using IMU and Feature Measurements*. 12.

**Haverila, M. J., Haverila, K. C., & McLaughlin, C.** (2021). Gender-based behavioural segmenting of the cellphone youth market. *International Journal of Business Excellence, 23*(1), 93. <https://doi.org/10.1504/IJBEX.2021.111914>

**Hu, J., & \*Gonzales, L.** (2020). English-as-an-Additional-Language Employees' Perspectives on Writing in the Workplace. *BC TEAL Journal, 91-108* Pages. <https://doi.org/10.14288/BCTJ.V5I1.343>

**Jackson, P. J., & Hwang, A. S.** (2021). Design Tools: Transforming Ideas into Products. In A. Sixsmith, J. Sixsmith, A. Mihailidis, & M. L. Fang (Eds.), *Knowledge, Innovation, and Impact* (pp. 211–219). Springer International Publishing. [https://doi.org/10.1007/978-3-030-34390-3\\_28](https://doi.org/10.1007/978-3-030-34390-3_28)

**\*Johnston, J., & Mason, C.** (2020). Eurocentric Lens to Indigenous Methods of Sharing Knowledge in Jasper National Park, Canada. *Journal of Park and Recreation Administration. https://doi.org/10.18666/JPRA-2020-10251*

**\*Johnston, J. W., & Mason, C.** (2020). The Paths to Realizing Reconciliation: Indigenous Consultation in Jasper National Park. *International Indigenous Policy Journal, 11*(4), 1–27. <https://doi.org/10.18584/iipj.2020.11.4.9348>

**Mason, C. W.** (2020). Colonial Encounters, Conservation, and Sport Hunting in Banff National Park. In C. Adams (Ed.), *Sport and Recreation in Canadian History* (pp. 87–111). Windsor.

McInnes, C., Shuttleworth, C. M., **Larsen, K. W.**, Everest, D. J., Bruemmer, C., Carroll, B., Romeo, C., Sainsbury, T., Crawshaw, G., Dubois, S., Gillis, L., Gilray, J., & Percival, A. (2020). Introduced Canadian Eastern grey squirrels: Squirrelpox virus surveillance and why nothing matters. *Hystrix the Italian Journal of Mammalogy, 31*(2), 0. <https://doi.org/10.4404/hystrix-00331-2020>

**Park, A. J., Patterson, L. D., Tsang, H. H., \*Ficocelli, R., Spicer, V., & Dodich,**

F. (2020). Testing Various Riot Control Police Formations through Agent-Based Modeling and Simulation. *2020 11th IEEE Annual Information Technology, Electronics and Mobile Communication Conference (IEMCON)*, 0765–0770. <https://doi.org/10.1109/IEMCON51383.2020.9284852>

**Park, A. J.**, & Stamato, S. Z. (n.d.). *Social Network Analysis of Global Transshipment: A Framework for Discovering Illegal Fishing Networks*. 8.

**Rahmati, S.**, & **Tawhid, M. A.** (2021). On intervals and sets of hypermatrices (tensors). *Frontiers of Mathematics in China*. <https://doi.org/10.1007/s11464-020-0884-3>

**Reid, B.** (n.d.). *New Playing Fields: Evolving Approaches to Teaching Sport Literature*. 8.

\***Ross, P.**, & **Mason, C. W.** (2020). “We Hardly Have Any Moose Around Here Anymore”: Climate Change and the Barriers to Food Security in the Dehcho Region, Northwest Territories. *ARCTIC*, 73(3), 368–385. <https://doi.org/10.14430/arctic71082>

Wasstrom, H. E., Cottell, C., Lofroth, E. C., & **Larsen, K. W.** (2020). Has the porcupine population waned in British Columbia? Trends in questionnaires and road-mortality data. *Northwestern Naturalist*, 101(3). <https://doi.org/10.1898/1051-1733-101.3.168>

\* *Indicates student author*