



Multimedia Classroom Guide

This guide is intended to familiarize the user with the TRU International Building multimedia equipment and its operation. Please contact Media Services if you require an orientation or if you experience technical difficulties with the systems.

Technical Support

Should you encounter technical problems please contact:

Murray Doubt at 828-5336 or email mdoubt@tru.ca
Arnold Boudreau at 371-5880 or email aboudreau@tru.ca
AV Services answering machine 828-5070

Multimedia classrooms have been equipped with a ceiling mount LCD projector. Inputs available to project are:

- Computer display from the podium PC, or a connection provided for a laptop computer
- VCR tape playback.
- DVD video playback. (PC DVD player or DVD/VCR)
- Elmo document camera

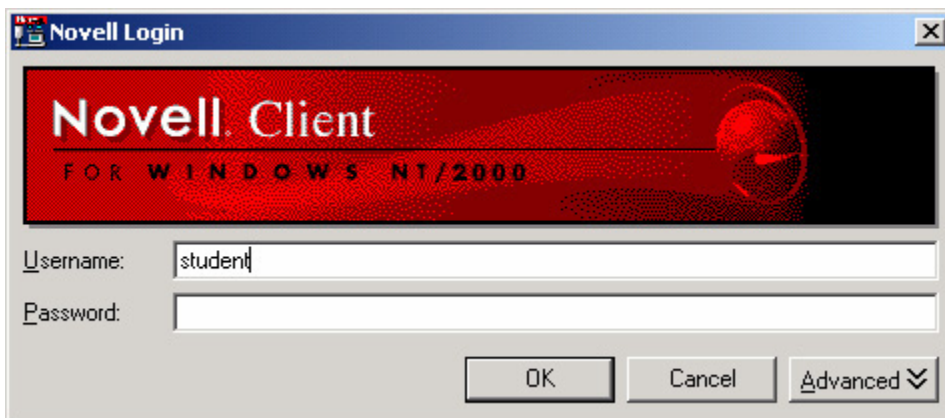
The system equipment is controlled from the podium computer using projector control software. Each room is equipped with a sound system to amplify sound from the various sources. The PC is network connected for Internet and LAN access.

Network Login

If you wish to access your Network Drive locations:

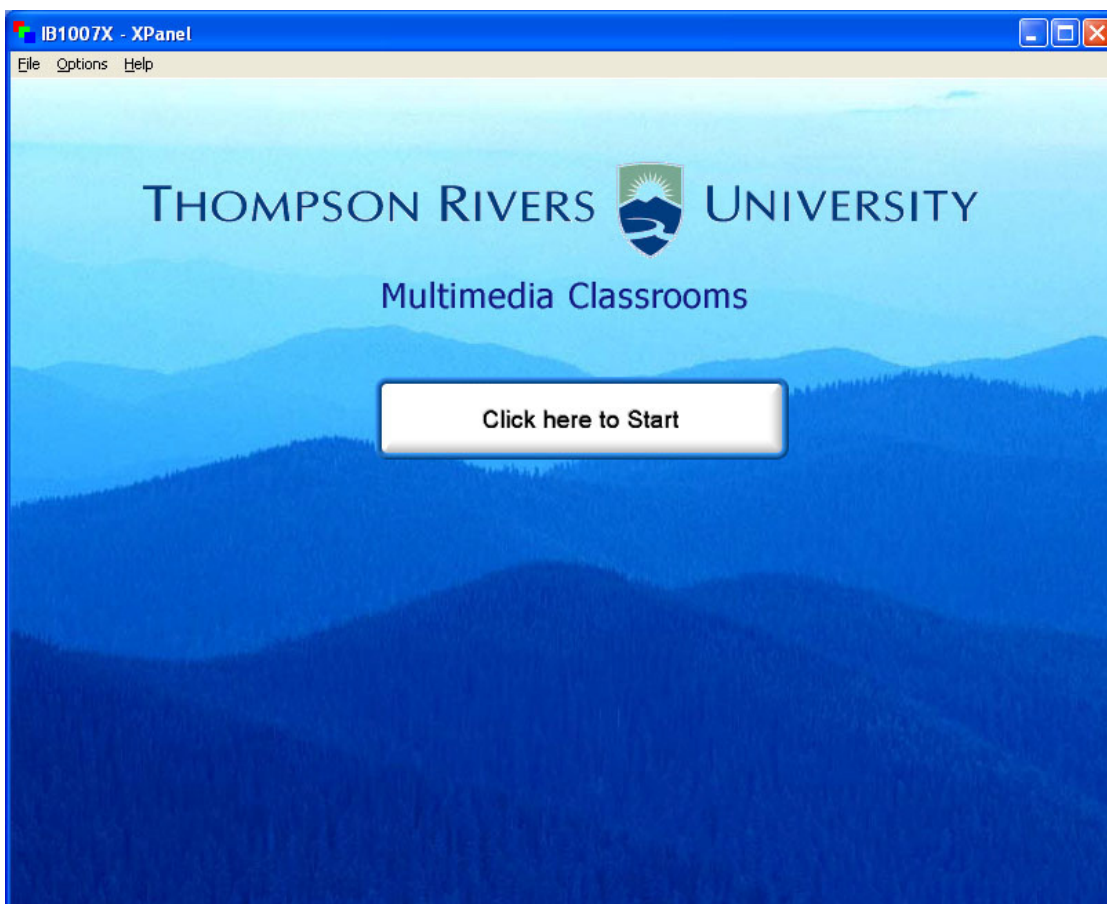
- Enter your TRU username
- Enter your password

At the Novell login window



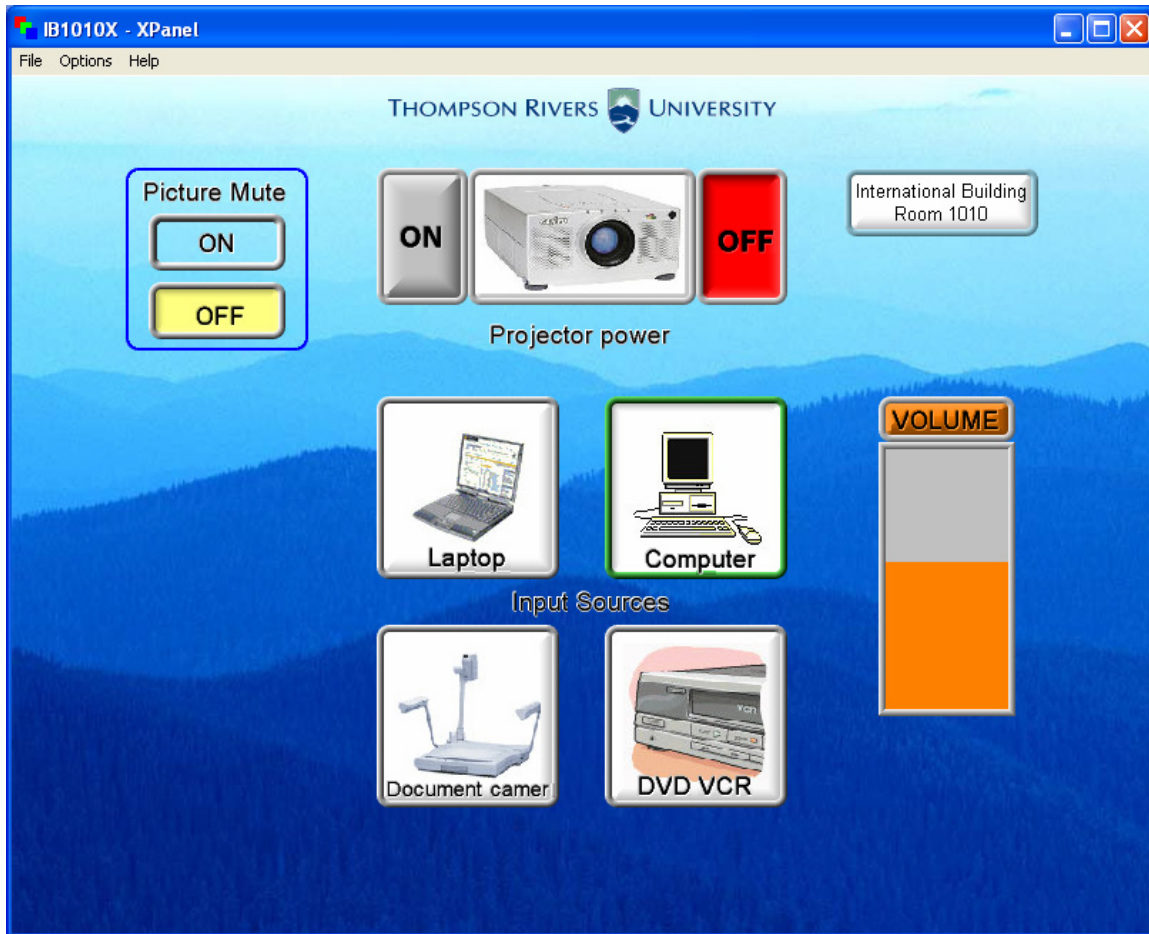
If you do not require network access, click "OK" at the Novell login window. **No password is required.**

The multimedia systems equipment functions are controlled from the podium PC using the software package, Projector Control. The Projector Control program is loaded in the startup files on the podium PCs and will start when the PC boots. If the Projector Control window is not active, click on the Projector Control desktop icon to activate the program.



XPanel start page

The Projector Control main page controls the LCD projector and TV power, and sources (data or video) for the projector and TVs. The VCR icon will open a corresponding control window, which will allow function (fast-forward, rewind, etc.) control.



Xpanel main page



The LCD projector is switched on or off with the icon pictured to the left. **When switching on the projector allow two minutes for the projector to reach full brightness.** When the projector has been shut off, allow five minutes for the projector to cool down before re-powering.

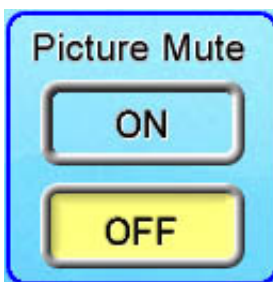
After the LCD projector power is on, select the information source you wish to view from the Project Control window icons.



The computer icon routes the podium computer display to the LCD projector.



The laptop icon routes display information from a laptop PC to the LCD projector. A VGA cable is available on the podium desktop to connect to the laptop.



The picture mute icon blanks the projection screen image. The podium monitor remains on. Click the "off" icon to restore the projection image.



Audio levels are controlled using the volume level slider on the Projector Control window. Volume is variable for the VCR, DVD, and computer audio sources. The DVD audio is adjustable within the PC DVD program as well by right clicking during DVD playback and adjusting the volume bar. Sound sources are switched when a projector input is selected, for example, when the computer icon is selected, PC sound is routed to the amplifier. When switching from the VCR Control page back to the Main page in the Projector Control window VCR audio will be muted

Podium Equipment Locations

Elmo document camera

Laptop VGA connectors

Lighting and screen controls

DVD/VCR

Computer

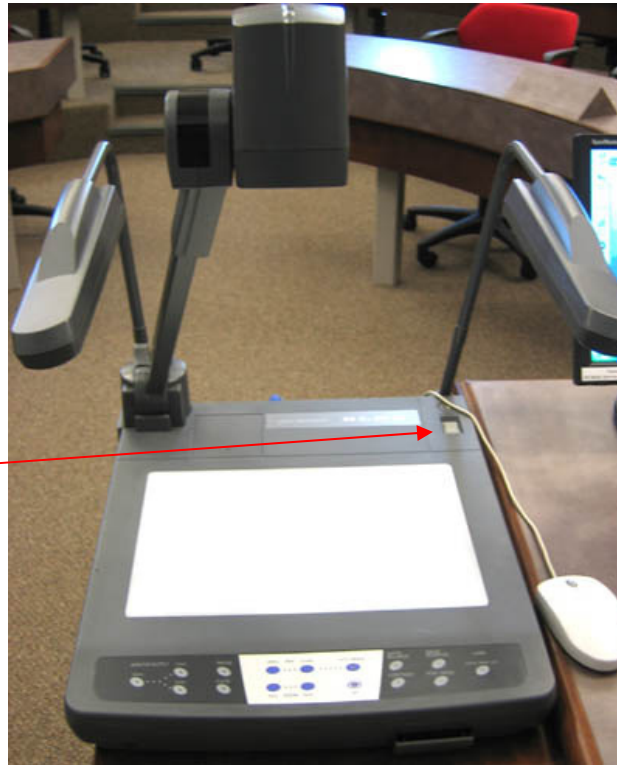


Laptop PC VGA, USB extension, and audio connectors

Elmo Document Camera



The Elmo document camera is used to display images, text, and three-dimensional objects. The video signal from the document camera is routed to the projector by selecting the document camera icon on the Projector Control main page.



Power Switch

The Elmo document camera power switch is located on the right rear surface.

Iris (brightness) control

Use the Tele/Zoom controls to zoom in and out on the document



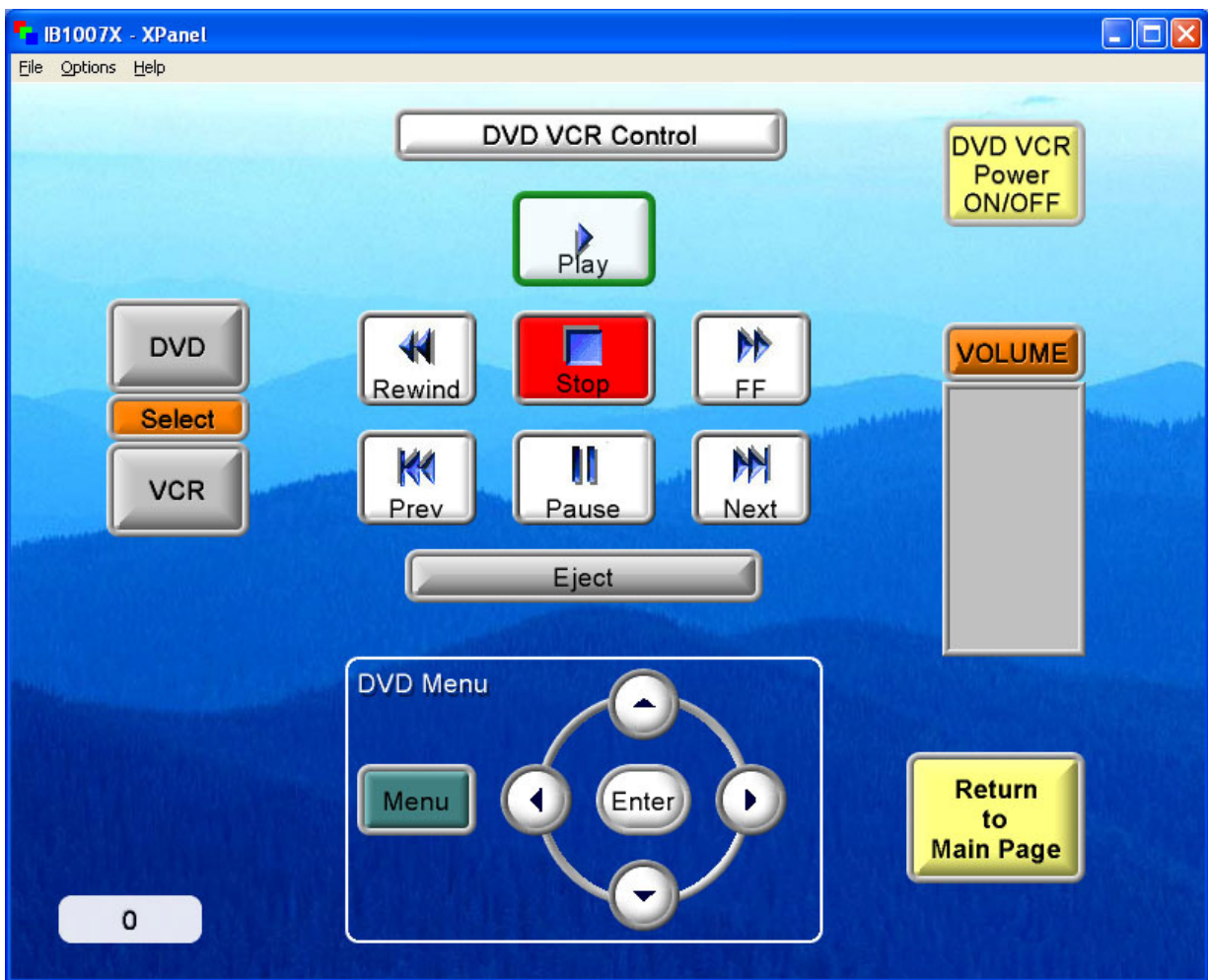
Use the Auto focus button to focus the object presented.

Use the upper or base lamps to light the object

DVD/VCR Control Window



When the DVD/VCR icon is selected the DVD/VCR control window will open. The icon also routes video and audio from the podium DVD/VCR to the projector. The control window allows remote control of DVD/VCR functions.



Clicking on the function icons controls the VCR functions: play, fast-forward, rewind, and pause. The input select icon selects the VCR input: either line or tuner. The volume bar controls playback sound level.