



Fact Book

UNIVERSITY
...with a difference

2002-2003



October 2003

Prepared by the Office of Institutional Research & Planning



2002 / 2003 FACT BOOK

14th Edition – October 2003

For additional copies please contact:

Office of Institutional Research and Planning
Box 3010, Kamloops, BC V2C 5N3
email: mnovak@cariboo.bc.ca
or access the FactBook on the web at
www.cariboo.bc.ca/insteval

TABLE OF CONTENTS

ENROLMENT AND UTILIZATION

Annual Student Headcount: 2002-2003	
Unduplicated Institutional Headcount	1
Student Headcount by Major Program Area	1
Full Time Equivalents	
Historical Analysis of Total Funded and Actual FTEs: 1989-2003	2
Historical Analysis by Major Program	
Academic 1 & 2	2
Academic 3, 4, & 5	2
All Academic Programs	3
Career/Technical Programs	3
Adult Basic Education	3
Apprenticeship Programs	4
Vocational Programs	4
New Era FTEs / Total Target FTEs: 2002-2005	5
Funded vs. Actual Audited FTE Report 2002-2003	6

STUDENT DEMOGRAPHICS

Full-Time/Part-Time Status & Gender Distributions: 2002-2003	
Academic	7-8
Career/Technical	9-10
Student Development	11-12
Vocational	13-15
Continuing Education	16-17
Unclassified Students	18-19
Distributions of Students by Home Location: 2002-2003	20
International Students: 2002-2003	21
First Nations Students Annual Unduplicated Headcount: 2002-2003	22
Gender Distribution by Degree: 2002-2003	23
Full-Time/Part-Time Status Distribution by Degree: 2002-2003	24

COMPLETION/PROMOTION/GRADUATION

Average Class Size: Fall 2002	25-29
Course Pass Rates: 2002-2003	30
UCC Degree Grade Distributions	31-34
Credentials Awarded by Division: Kamloops & Williams Lake – June 2003	35
Credentials Awarded at UCC: 1995-2003	36
UCC Degrees Granted: 1992-2003	37

WILLIAMS LAKE

Headcount Enrolments: 1994-2002	38
Faculty Academic Qualifications	38
Williams Lake Campus FTE Enrollment Report: 2002-2003	39

REGIONAL LEARNING CENTRES

Regional Educational Activity: Summer 2002-Winter 2003	40
--	----

FACULTY/STAFF/SERVICES

Profile of UCC Employees / Age Profile of On-going Full-time Staff	41
Faculty by Gender	42-43
Academic Qualifications of Faculty	44-45
Assessment Centre / Financial Aid & Awards	46
Cooperative Education	47
Library Services	48
UCC Foundation	49

FINANCIAL INFORMATION

Summary Statement of Financial Activity: 2002-2003	50-51
--	-------

Note: Where information has been provided for First Nations students these figures do not reflect the full enrolment at UCC of Aboriginal Peoples of Canada (Status, Metis, Inuit, Non-Status or Aboriginal Descent) due to the self-identification box on the UCC application form.

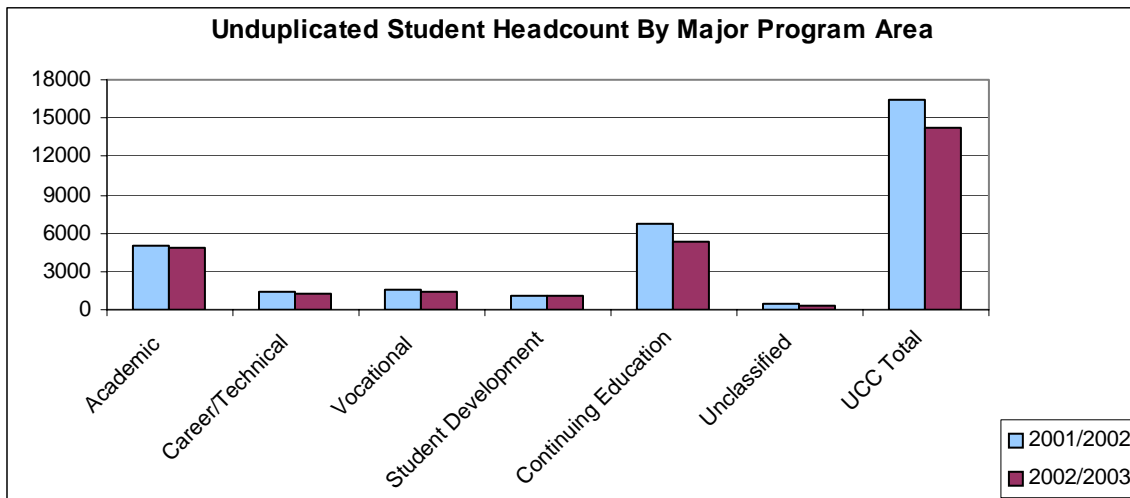
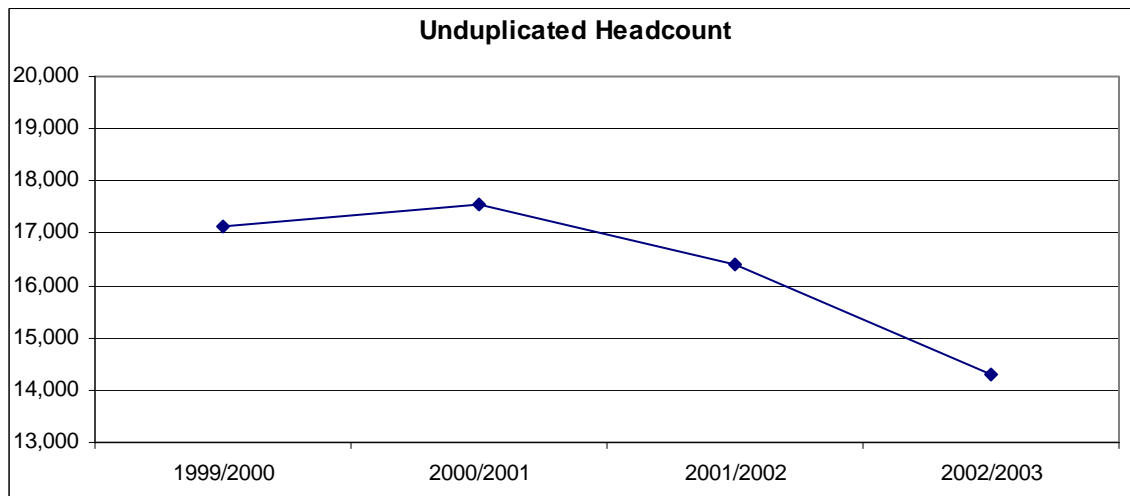
ANNUAL UNDUPLICATED STUDENT HEADCOUNT: 2002-2003

Institutional Total Unduplicated Headcount

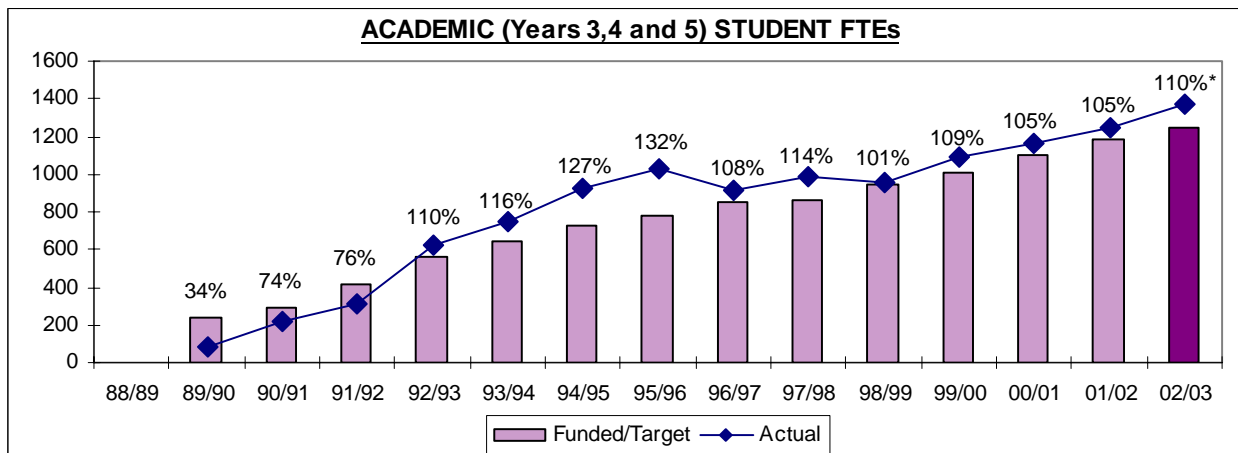
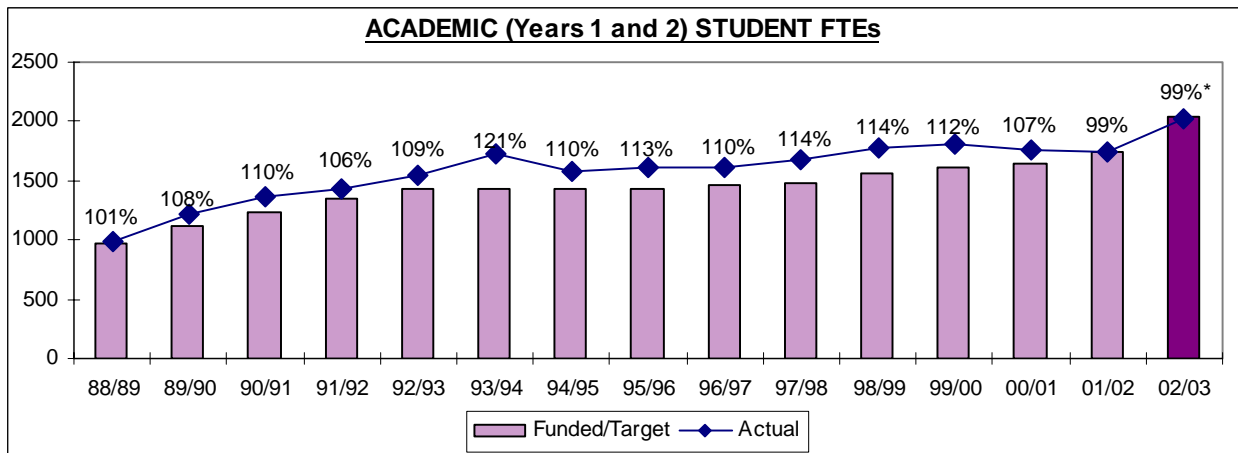
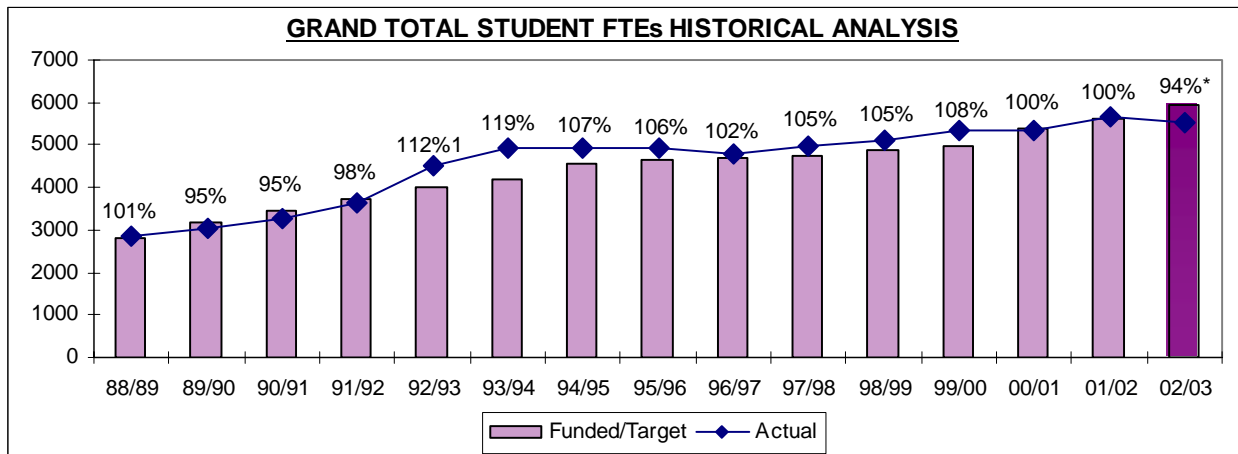
1999/00	17,120
2000/01	17,566
2001/02	16,397
2002/03	14,300

Unduplicated Student Headcount By Major Program Area

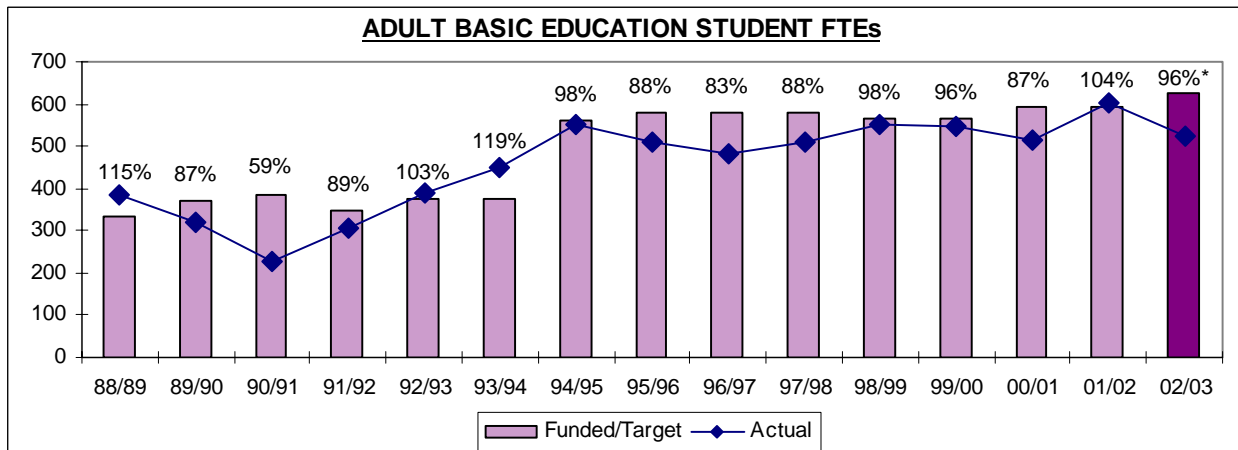
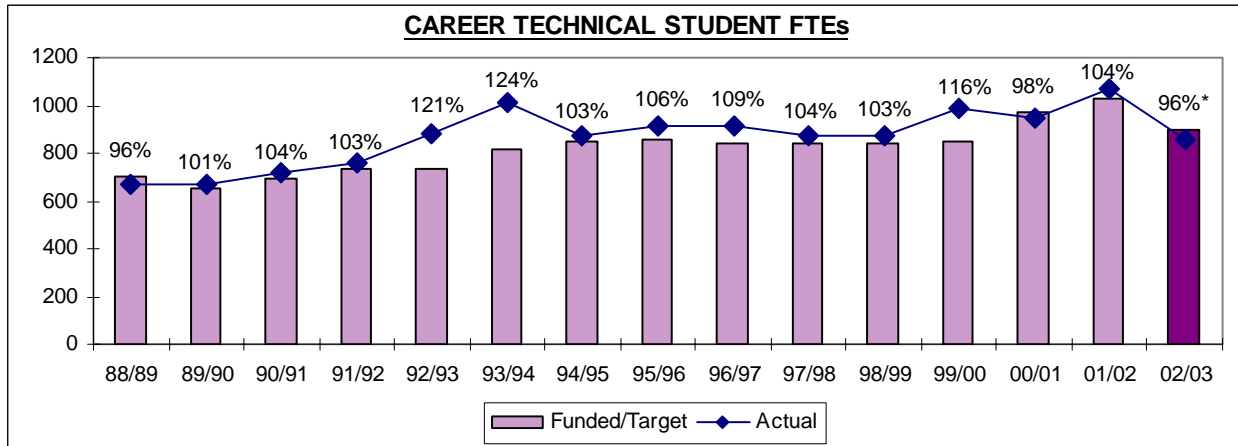
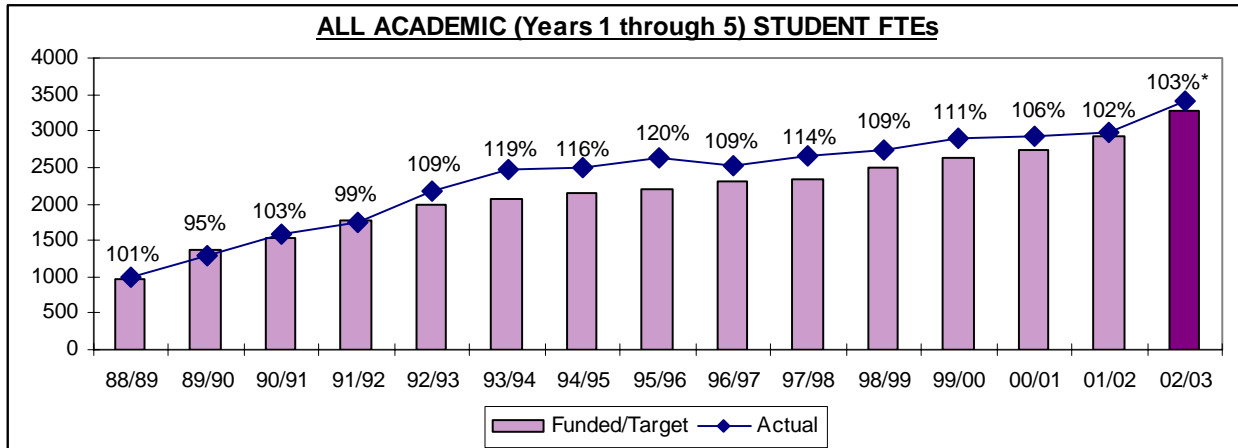
	2001/02	2002/03
Academic	5,073	4,889
Career/Technical	1,388	1,179
Vocational	1,594	1,382
Developmental	1,114	1,135
Continuing Studies	6,709	5,351
Unclassified	519	364
UCC Total	16,397	14,300



Source: Office of Institutional Research and Planning

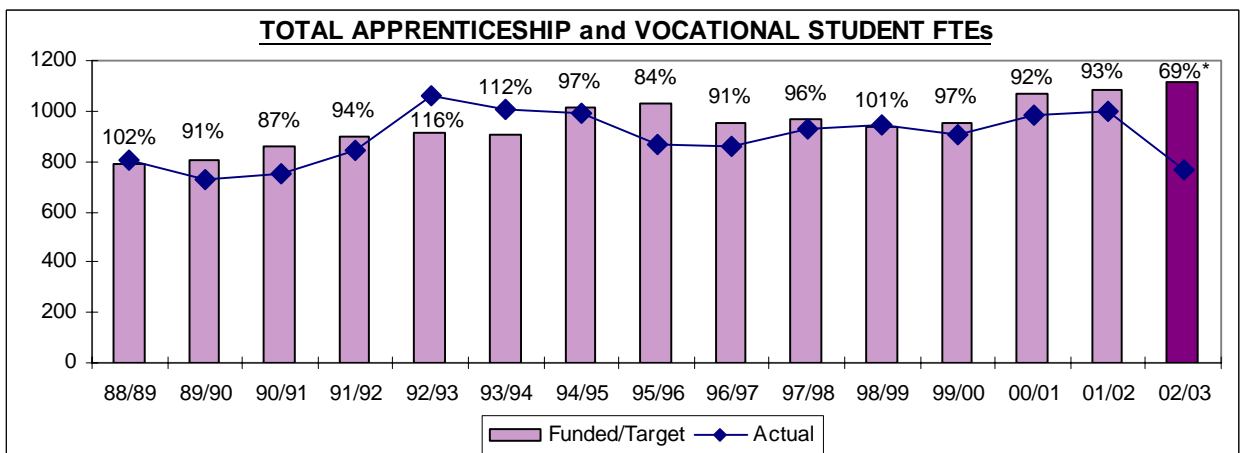
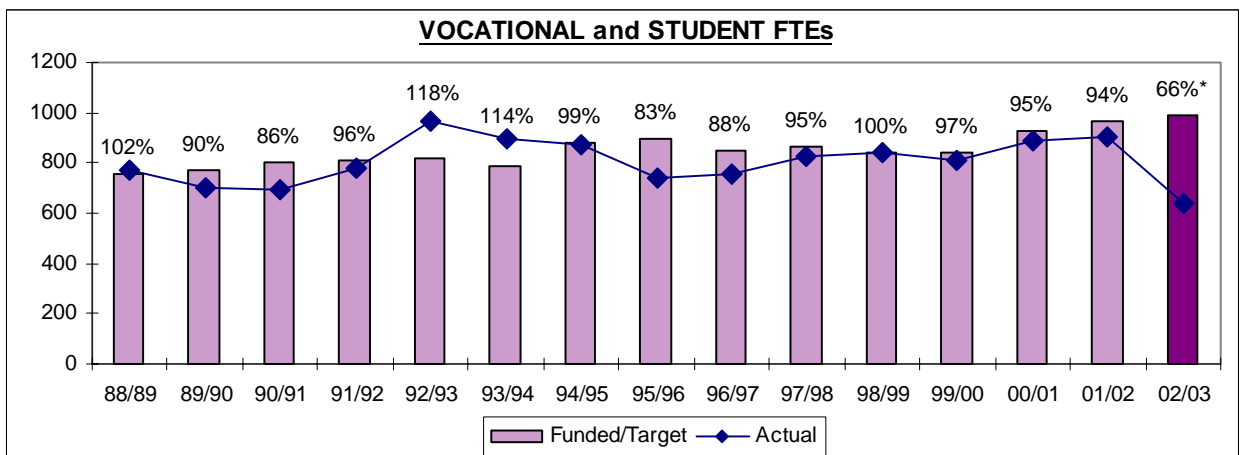
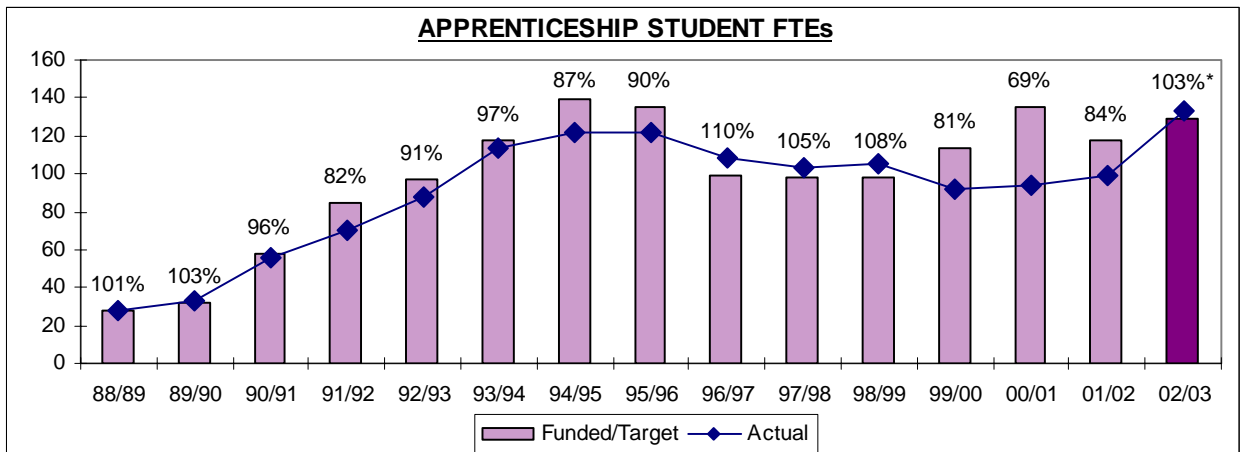


*Note: 1988/89 through 01/02 percentages indicate funded vs. actual utilization, whereas 2002/03 figures represent the percentage utilized of the MAVED target.



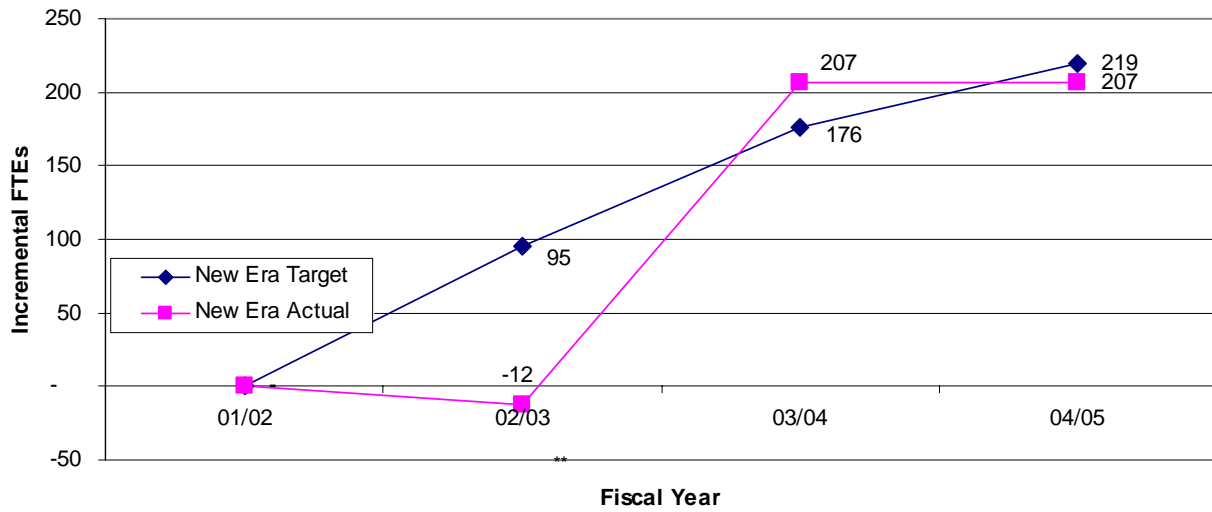
*Note: 1988/89 through 01/02 percentages indicate funded vs. actual utilization, whereas 2002/03 figures represent the percentage utilized of the MAVED target.

Prepared by the Office of the VP Academic, UCC

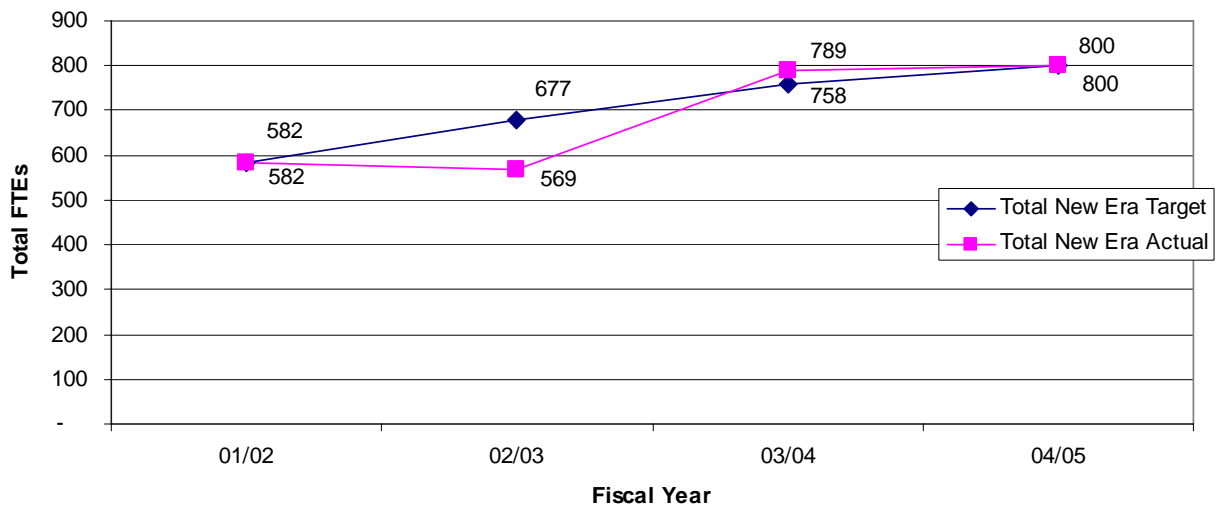


*Note: 1988/89 through 01/02 percentages indicate funded vs. actual utilization, whereas 2002/03 figures represent the percentage utilized of the MAVED target.

**New Era FTEs: Target Versus Actual and Projected Actual
2002-2005**



**Total Target FTEs: Target Versus Actual and Projected Actual
2002-2005**



2002/03 FUNDED VS. 2002/03 ACTUAL FTEs* (Audited)

NAME	2001/02 FUNDED FTE	2002/03 ACTUAL FTE	NAME	2001/02 FUNDED FTE	2002/03 ACTUAL FTE
ADULT BASIC EDUCATION			ENTRY LEVEL TRADES TRAINING		
ENGLISH LANG TRAINING	36.5	42.3	HORTICULTURE	38.2	32.9
ABE DEVELOPMENTAL LEVEL	348.1	386.8	ELECTRONIC TECH	104.0	89.3
ABE FUNDAMENTAL LEVEL	102.1	64.1	ELECTRICAL TR/ENT	24.0	19.3
ASE EMPLOYMENT PREP	75.0	25.9	AUTO MECHANICS	30.0	24.0
ASE ACADEMIC SKILLS	30.5	2.8	HD/COMM TRANSPORT	54.0	39.0
SUBTOTAL	592.2	521.9	MARINE I/O	20.0	12.7
APPRENTICESHIP			WELDING C/FITTER	33.0	41.0
ELECTRICAL	55.3	71.8	WELDING B	13.6	4.6
HD/COMMERCIAL TRAN	32.4	28.3	WELDING A	2.0	1.2
WELDING	0.8	1.9	RESIDENTIAL CONST	17.0	20.5
CARP/BUILDING	13.2	14.5	PLUM/STEAM	20.0	15.8
PLUMBING/STEAM	11.7	14.6	PARTSPERSON	30.2	34.7
GASFITTING	4.4	2.4	COOKING	47.6	45.7
SUBTOTAL	117.9	133.5	MEAT CUTTING	16.0	14.5
CAREER TECHNICAL			SUBTOTAL	449.6	395.2
ANIMAL HEALTH	44.0	40.9	VOCATIONAL		
COMPUTER MANUFACTURING	32.0	11.2	OFFICE ADMINISTRATION	151.0	72.3
ENGINEERING DES/DRAFT	72.0	50.0	HUMAN SERVICES	54.5	71.6
BUS ADMIN/ACCOUNT	180.0	143.8	RESIDENTIAL CARE AIDE	37.2	61.4
DIGITAL ART & DESIGN	21.6	17.4	EARLY CHILDHOOD EDUC	52.0	35.5
TOURISM (EVENTS/RESORT)	87.0	93.3	SUBTOTAL*	294.7	240.8
COMPUTER SYST OP MGMT	114.0	83.0	UNIVERSITY COLLEGE		
CHILD & YOUTH WORKER	24.0	20.7	ACADEMIC	1,930.0	2,026.1
ADVENTURE GUIDE	44.0	40.9	B.ARTS	328.8	426.1
HEALTH SCI-DIST ED	6.0	124.8	B.EDUCATION (ELEM)	120.0	133.9
RESPIRATORY THERAPY	115.0	107.6	B.NURSING	70.0	99.1
FINE ARTS	110.0	124.7	B.BUSINESS	170.0	203.1
SUBTOTAL	849.6	858.3	B.SCIENCE	160.0	218.1
			B.SOCIAL WORK	90.0	77.9
			B.SOCIAL WORK (NVIT)	22.7	31.8
			B.NATURAL RESOURCES	82.0	56.7
			B.TOURISM	41.0	44.6
			B.JOURNALISM	50.0	47.1
			B.TECH APPLIED COMP SCI	50.0	31.8
			SUBTOTAL	3,114.5	3,396.3
			*Add back CTC, Exp Cap & PT Voc (01/02 only)	218.3	-
			UCC TOTAL	5,636.8	5,546.0

94% OF BLOCK TARGET

UNFUNDED ACTIVITY	ACTUAL FTE
INTERNATIONAL EDUCATION	686.9
NON TRANSCRIPTABLE INSTRUTION	102.7

*Note: 2001/02 "Funded" figures are included for comparative purposes; in reality these figures no longer exist due to move towards block funding.

Source: Prepared by the Office of the VP Academic

**ACADEMIC PROGRAMS: FULL-TIME / PART-TIME
GENDER & AGE DISTRIBUTIONS
SUMMER 2002 – WINTER 2003**

Gender Distribution - Academic Students:	Full-time	Part-time	Total
Male	1456	439	1895
Female	2321	673	2994
Total	3777 (77.26%)	1112 (22.74%)	4889 (100.00%)

Age Group	Full-time			Part-time			TOTAL	% of all Students
	Male	Female	Total	Male	Female	Total		
Under 18	7	14	21	3	4	7	28	0.57%
18-24	1132	1696	2828	320	420	740	3568	73.03%
25-29	194	273	467	47	71	118	585	11.97%
30-34	63	136	199	26	50	76	275	5.63%
35-39	22	85	107	10	32	42	149	3.05%
40+	37	117	154	32	95	127	281	5.75%
Subtotal	1455	2321	3776	438	672	1110	4886	100.00%
Not Reported			1			2	3	
TOTAL			3777			1112	4889	

**ACADEMIC PROGRAMS: FIRST NATIONS GENDER & FT / PT
DISTRIBUTIONS 2002-2003**

Gender Distribution – First Nations Students:	Full-time	Part-time	Total
Male	38	23	61
Female	98	59	154
Total	136	82	215

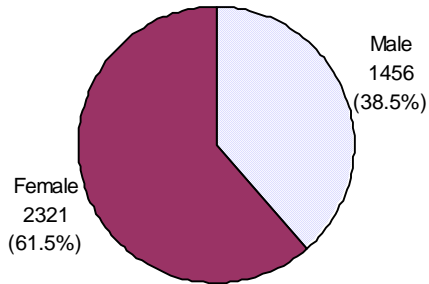
ACADEMIC PROGRAMS: FT / PT & YEAR LEVEL DISTRIBUTIONS 2002-2003

Class Level Distribution	Full-time	Part-time	Total
Year 1	1712	708	2420
Year 2	697	169	866
Upper Level	1281	198	1479
Year 5*	68	1	69
Post Baccalaureate/Diploma	1	3	4
N/A (no level indicated)	18	33	51
Total	3777	1112	4889

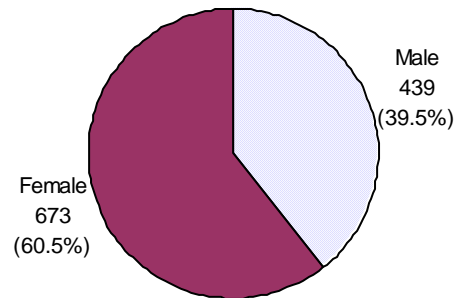
*Year level 5 only includes students in the Bachelor of Education Program
Source: Office of Institutional Research and Planning

ACADEMIC PROGRAMS: FULL-TIME / PART-TIME GENDER & AGE DISTRIBUTIONS SUMMER 2002 – WINTER 2003

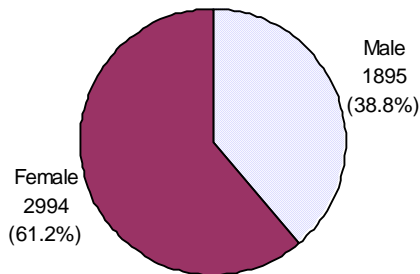
Summer 02 - Winter 03 Full-time Gender Distribution



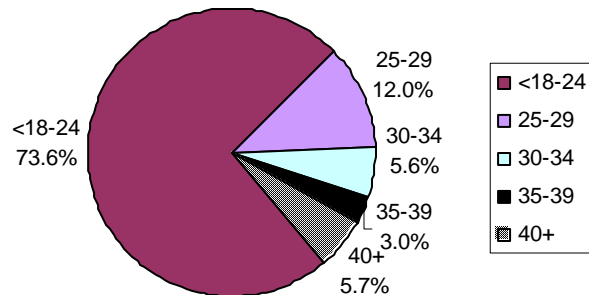
Summer 02 - Winter 03 Part-time Gender Distribution



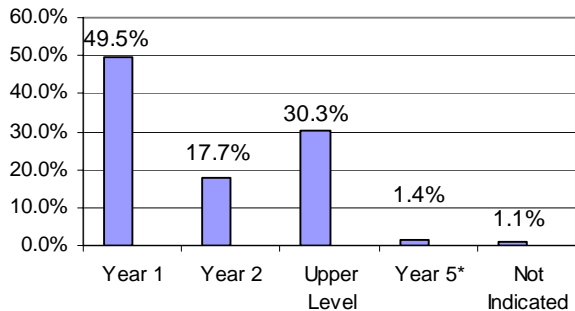
Total Summer 02 - Winter 03 Gender Distribution



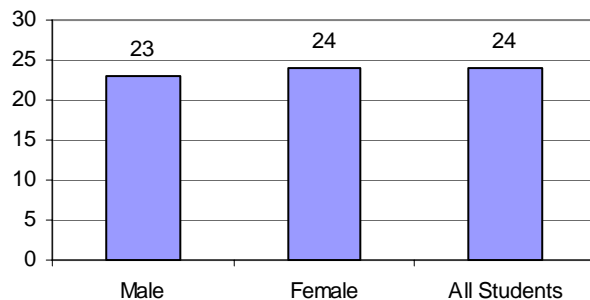
Total Age Distribution Summer 02 - Winter 03



Academic Year Level Distribution Fall 01



Average Age as of Jan 01/2003 For Academic Students Summer 02 - Winter 03



*Year level 5 only includes students in the Bachelor of Education Program
Source: Office of Institutional Research and Planning

**CAREER / TECHNICAL PROGRAMS: FULL-TIME / PART-TIME
GENDER & AGE DISTRIBUTIONS
SUMMER 2002 – WINTER 2003**

Gender Distribution	Full-time	Part-time	Total
Car/Tech Students:			
Male	489	94	583
Female	467	129	596
Total	956	223	1179
	(81.09%)	(18.91%)	(100.00%)

Age Group	Full-time			Part-time			TOTAL	% of all Students
	Male	Female	Total	Male	Female	Total		
Under 18	3	3	6	-	-	-	6	.51%
18-24	267	259	526	42	46	88	614	52.21%
25-29	109	78	187	18	17	35	222	18.88%
30-34	59	49	108	9	13	22	130	11.05%
35-39	21	29	50	5	13	18	68	5.78%
40+	28	48	76	20	40	60	136	11.57%
Subtotal	487	466	953	94	129	223	1176	100.00%
Not Reported			3			-	3	
TOTAL			956			223	1179	

**CAREER / TECHNICAL PROGRAMS: FIRST NATIONS GENDER &
FT / PT DISTRIBUTIONS 2003-2003**

Gender Distribution –	Full-time	Part-time	Total
First Nations Students:			
Male	7	4	11
Female	22	5	27
Total	29	9	38

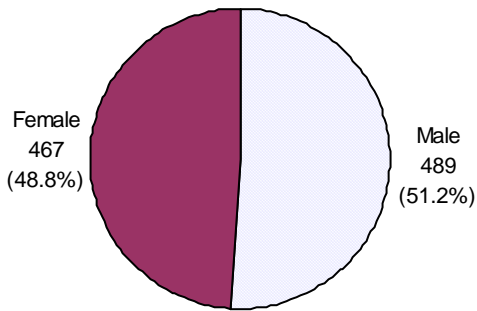
**CAREER / TECHNICAL PROGRAMS: FT / PT & YEAR LEVEL
DISTRIBUTIONS 2003-2003**

Class Level Distribution	Full-time	Part-time	Total
Year 1	391	127	518
Year 2	332	53	385
Year 3	73	24	97
N/A (no level indicated)	160	19	179
Total	956	223	1179

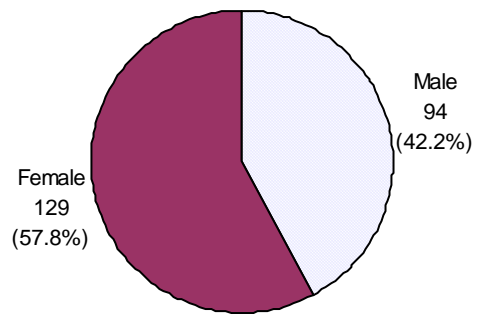
Source: Office of Institutional Research and Planning

CAREER / TECHNICAL PROGRAMS: FULL-TIME / PART-TIME GENDER & AGE DISTRIBUTIONS SUMMER 2002 – WINTER 2003

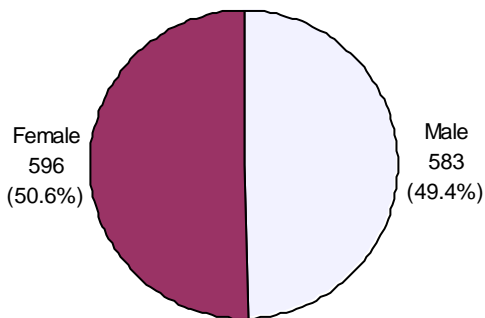
Summer 02 - Winter 03 Full-time Gender Distribution



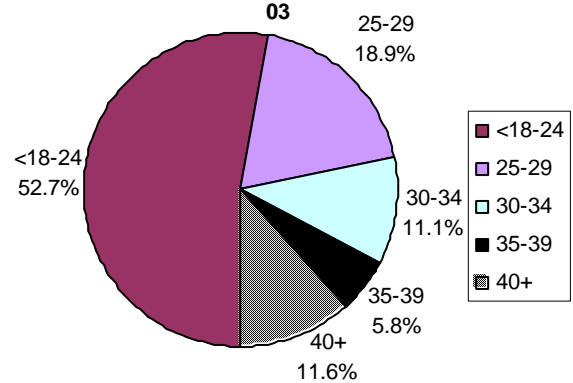
Summer 02 - Winter 03 Part-time Gender Distribution



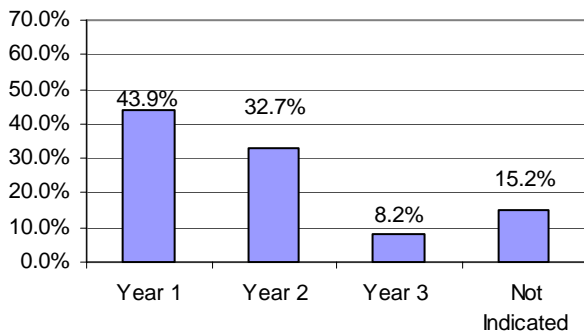
Total Summer 02 - Winter 03 / Gender Distribution



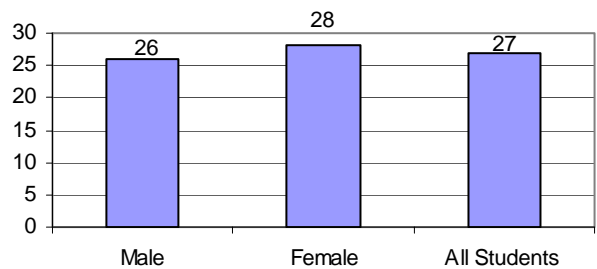
Total Age Distribution / Summer 01 - Winter 03



Career/Technical Year Level Distribution 2002-2003



Average Age as of Jan 01/2003 For Career/Technical Students Summer 02 - Winter 03



**STUDENT DEVELOPMENT PROGRAMS: GENDER & AGE DISTRIBUTIONS
SUMMER 2002 – WINTER 2003**

**Gender Distribution -
Developmental
Students:**

Male	466
Female	669
Total	1135

Age Group	Male	Female	Total	% of all Students
Under 18	11	21	32	2.84%
18-24	245	282	527	46.68%
25-29	70	89	159	14.08%
30-34	43	94	137	12.13%
35-39	27	59	86	7.62%
40+	67	121	188	16.65%
Subtotal	463	666	1129	100.00%
Not Reported	3	3	6	
TOTAL	466	669	1135	

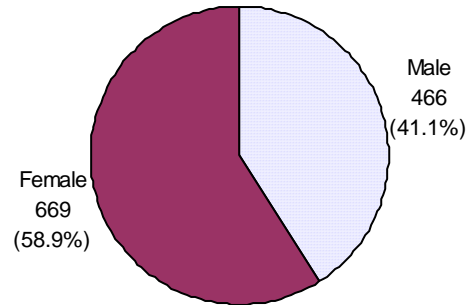
**STUDENT DEVELOPMENT PROGRAMS: FIRST NATIONS GENDER
DISTRIBUTION 2002-2003**

**Gender Distribution –
First Nations Students:**

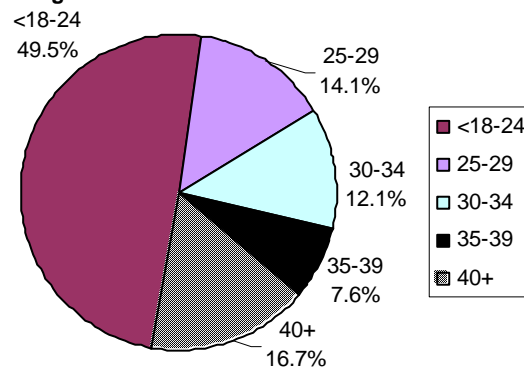
Male	61
Female	115
Total	176

STUDENT DEVELOPMENT PROGRAMS: GENDER & AGE DISTRIBUTIONS SUMMER 2002 – WINTER 2003

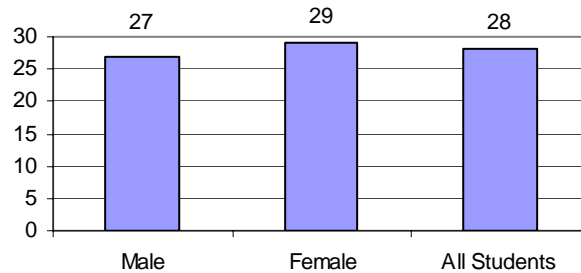
Summer 02 - Winter 03 Gender Distribution



Total Age Distribution Summer 02 - Winter 03



Average Age as of Jan 01/2003 For Student Development Students Summer 02 - Winter 03



**SEMESTERIZED VOCATIONAL PROGRAMS: FULL-TIME / PART-TIME
GENDER & AGE DISTRIBUTIONS**
(Community & School Support Worker, Early Childhood Education, Social Service Worker)
SUMMER 2002 – WINTER 2003

Gender Distribution	Full-time	Part-time	Total
Voc/Sem Students:			
Male	12	2	14
Female	112	19	131
Total	124	21	145

Age Group	Full-time			Part-time			TOTAL	% of all Students
	Male	Female	Total	Male	Female	Total		
Under 18	-	-	-	-	-	-	-	-
18-24	4	43	47	1	6	7	54	37.24%
25-29	1	19	20	-	5	5	25	17.24%
30-34	-	16	16	1	1	2	18	12.41%
35-39	1	11	12	-	2	2	14	9.66%
40+	6	23	29	-	5	5	34	23.45%
Subtotal	12	112	124	2	19	21	145	100.00%
Not Reported			-			-	-	
TOTAL			124			21	145	

**SEMESTERIZED VOCATIONAL PROGRAMS: FIRST NATIONS
GENDER & FT / PT DISTRIBUTIONS 2002-2003**

Gender Distribution –	Full-time	Part-time	Total
First Nations Students:			
Male	1	-	1
Female	20	7	27
Total	21	7	28

**NON-SEMESTERIZED VOCATIONAL PROGRAMS: FULL-TIME /
PART-TIME GENDER & AGE DISTRIBUTIONS
SUMMER 2002 – WINTER 2003**

Gender Distribution Voc Non- Semesterized Students:	Full-time	Part-time	Total
Male	993	-	993
Female	244	-	244
Total	1237	0	1237

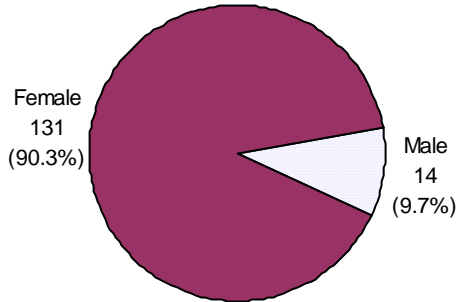
Age Group	Male	Female	Total	% of all Students
Under 18	36	8	44	3.60%
18-24	457	106	563	45.99%
25-29	186	29	215	17.56%
30-34	103	28	131	10.71%
35-39	84	19	103	8.42%
40+	114	54	168	13.72%
Subtotal	980	244	1224	100.00%
Not Reported			13	
TOTAL			1237	

**NON-SEMESTERIZED VOCATIONAL STUDENTS: FIRST NATIONS
GENDER DISTRIBUTION 2002-2003**

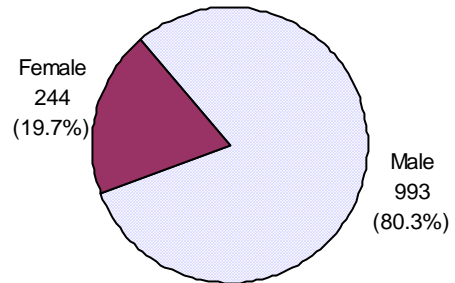
Gender Distribution – First Nations Students:	Total
Male	39
Female	27
Total	66

SEMESTERIZED & NON-SEMESTERIZED VOCATIONAL PROGRAMS: FULL-TIME / PART-TIME GENDER & AGE DISTRIBUTIONS SUMMER 2002 – WINTER 2003

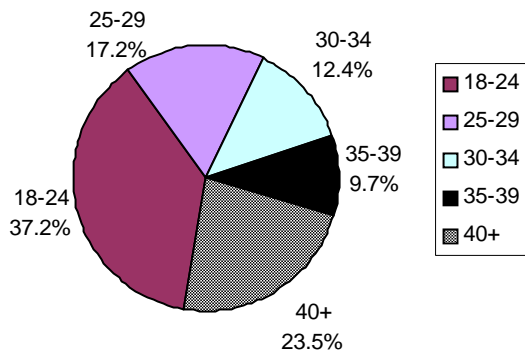
Total Summer 02 - Winter 03 Semesterized Vocational Gender Distribution



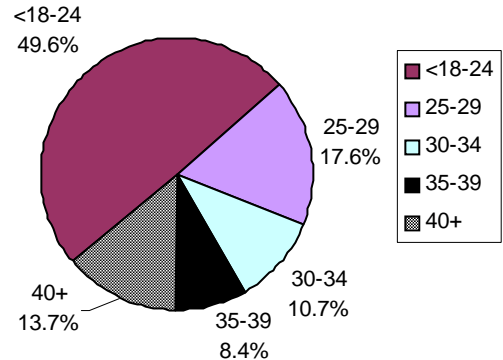
Total Summer 02 - Winter 03 Non-Semesterized Vocational Gender Distribution



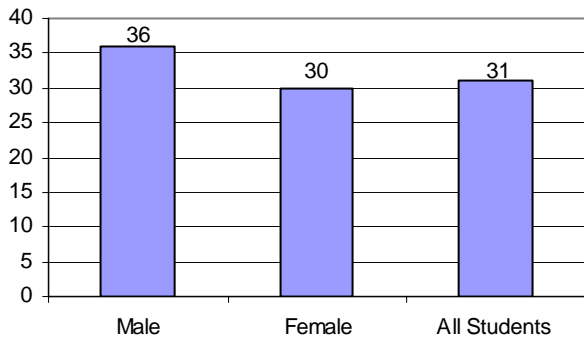
Total Summer 02 - Winter 03 Semesterized Vocational Age Distribution



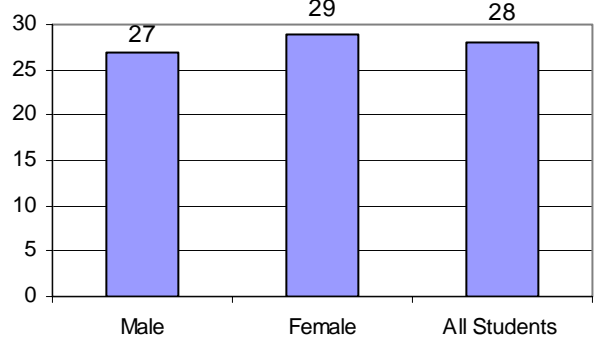
Total Summer 02 - Winter 03 Non-Semesterized Vocational Age Distribution



Average Age as of Jan 01/2003 For Semesterized Vocational Students



Average Age as of Jan 01/2003 For Non-Semesterized Vocational Students



CONTINUING STUDIES PROGRAMS: GENDER & AGE DISTRIBUTIONS

(Applied Computing, Asthma Educator, Animal Welfare, Continuing Education – Extension, Continuing Education Health Sciences, Executive Diploma General Management, General Insurance, Management Skills for Supervisors, Microcomputer in Business, Medical Lab Assistant)

SUMMER 2002 – WINTER 2003

Gender Distribution Continuing Studies Students:

Male	2311
Female	3040
Total	5351

Age Group			TOTAL	% of all
	Male	Female		Students
Under 18	389	471	860	16.66%
18-24	333	412	745	14.43%
25-29	196	268	464	8.99%
30-34	220	281	501	9.70%
35-39	207	300	507	9.82%
40+	885	1201	2086	40.40%
Subtotal	2230	2933	5163	100.00%
Not Reported			188	
TOTAL			5351	

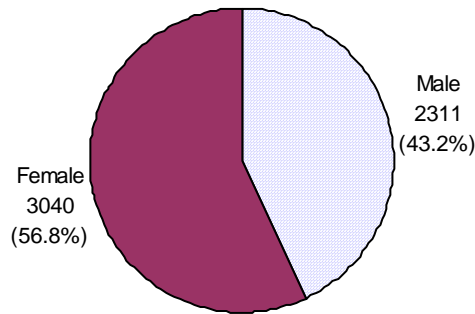
CONTINUING STUDIES PROGRAMS: FIRST NATIONS GENDER DISTRIBUTION 2002-2003

Gender Distribution – First Nations Students:

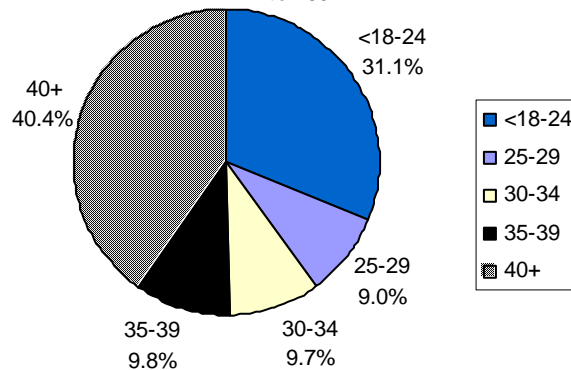
Male	59
Female	95
Total	154

CONTINUING STUDIES PROGRAMS: GENDER & AGE DISTRIBUTIONS SUMMER 2002 – WINTER 2003

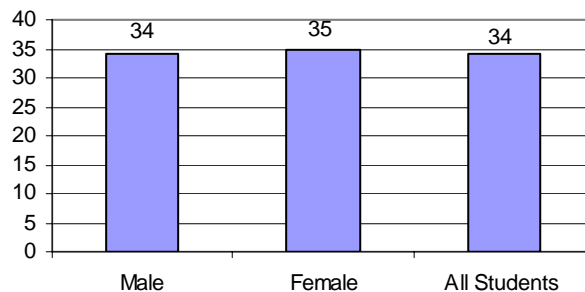
**Total Summer 02 - Winter 03 Gender
Distribution**



**Total Age Distribution Summer 02 -
Winter 03**



**Average Age as of Jan 01/2003 for
Continuing Studies Students**



**UNCLASSIFIED STUDENTS: FULL-TIME / PART-TIME &
GENDER & AGE DISTRIBUTIONS
SUMMER 2002 – WINTER 2003**

Gender Distribution Voc/Sem Students:	Full-time	Part-time	Total
Male	36	75	111
Female	50	203	253
Total	86 (23.63%)	278 (76.37%)	364 (100.00%)

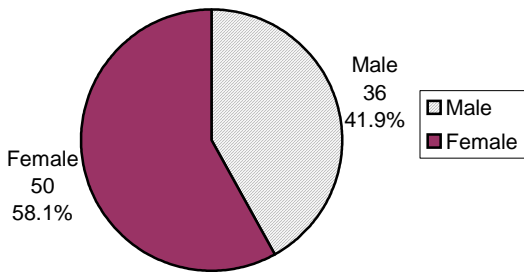
Age Group	Full-time			Part-time			TOTAL	% of all Students
	Male	Female	Total	Male	Female	Total		
Under 18	-	-	-	-	1	1	1	.27%
18-24	18	25	43	18	26	44	87	23.94%
25-29	8	15	23	11	25	36	59	16.25%
30-34	3	5	8	18	26	44	52	14.32%
35-39	2	1	3	7	23	30	33	9.10%
40+	5	4	9	20	102	122	131	36.09%
Subtotal	36	50	86	74	203	277	363	100.00%
Not Reported						1	1	
TOTAL						278	364	

**UNCLASSIFIED STUDENTS: FIRST NATIONS GENDER & FT / PT
DISTRIBUTIONS**

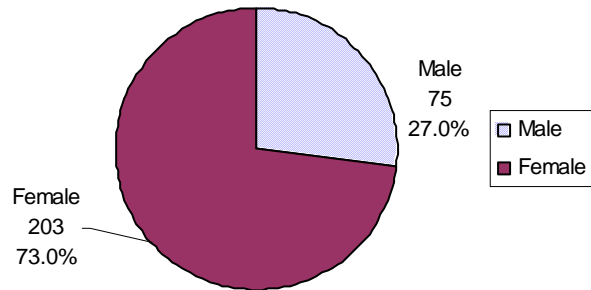
Gender Distribution – First Nations Students:	Full-time	Part-time	Total
Male	3	2	5
Female	3	11	14
Total	6	13	19

UNCLASSIFIED STUDENTS: FULL-TIME / PART-TIME GENDER & AGE DISTRIBUTIONS SUMMER 2002 – WINTER 2003

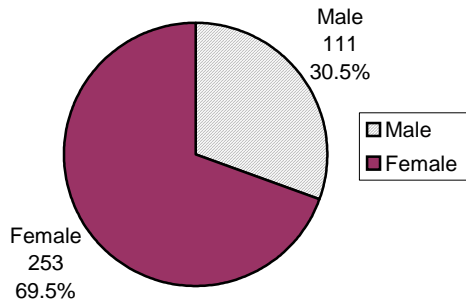
Summer 02 - Winter 03 Full-time Gender Distribution



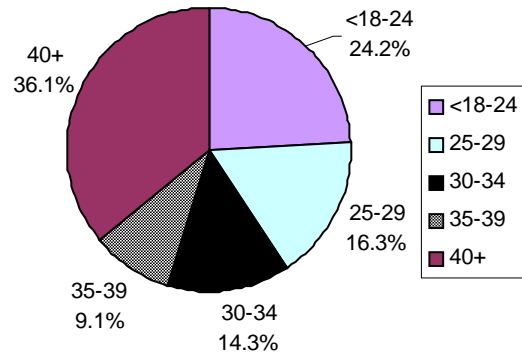
Summer 02 - Winter 03 Part-time Gender Distribution



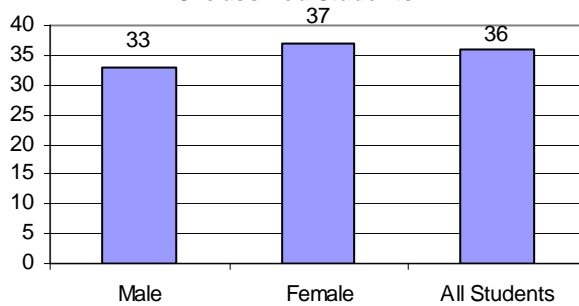
Total Summer 02 - Winter 03 Gender Distribution



Total Age Distribution Summer 02 - Winter 03

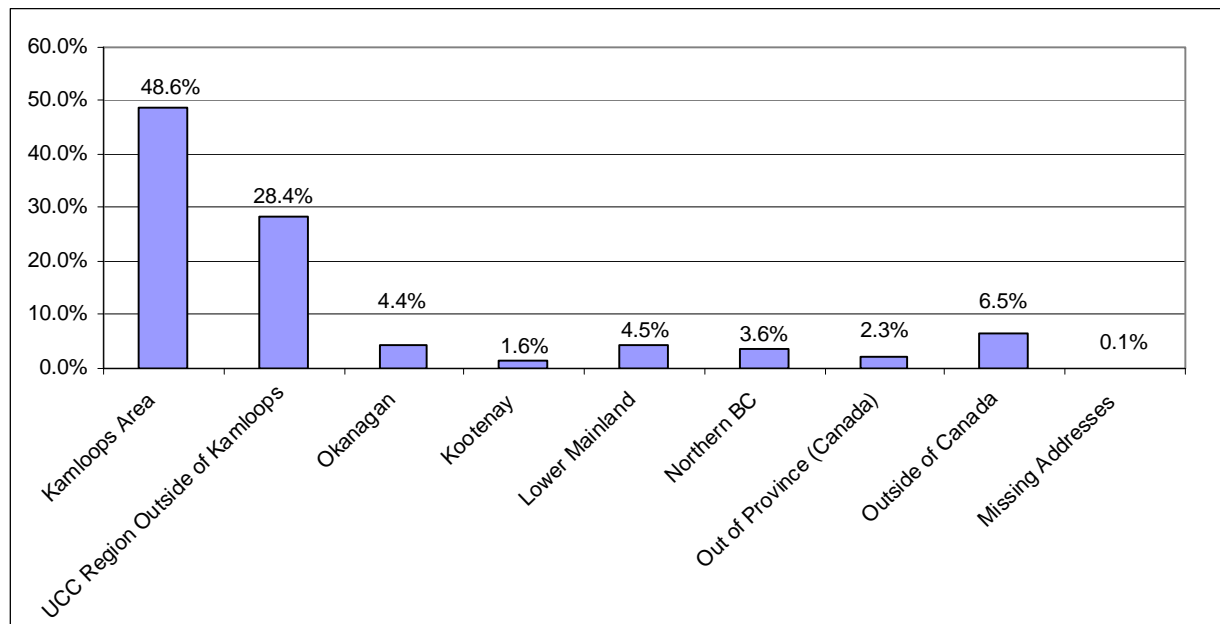


Average Age as of Jan 1/2003 for Unclassified Students



DISTRIBUTIONS OF UCC STUDENTS BY HOME LOCATION 2002-2003

Geographical Distribution of All UCC Students



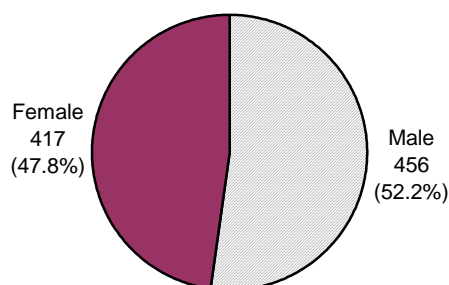
Distribution of UCC Students

PROVINCE/TERRITORY		PROVINCE/TERRITORY	
British Columbia	13,037	Nova Scotia	4
Alberta	185	Newfoundland	1
Saskatchewan	27	Northwest Territories	9
Manitoba	5	Yukon	18
Ontario	62	Nunavut	0
Quebec	7	Outside of Canada	928
New Brunswick	3	Missing	13
Prince Edward Island	1		
Total Students			14,300

INTERNATIONAL STUDENT ENROLMENT BY COUNTRY OF ORIGIN IN 2002-2003

(based on fee type)

Gender Distribution of International Students



International Student Headcount By Major Program Area	2002-2003
Academic	609
Career/Technical	81
Vocational	2
Student Development	165
Continuing Education	5
Unclassified	11
UCC Total	873

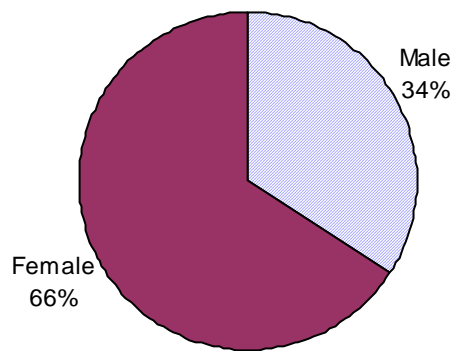
Country of Origin	Male	Female	Total	Country of Origin	Male	Female	Total
Argentina	-	1	1	Macau	-	1	1
Australia	1	1	2	Malaysia	-	2	2
Bahamas	-	1	1	Martinique	1	-	1
Bangladesh	17	1	18	Mexico	13	10	23
Belize	-	1	1	Nepal	-	2	2
Brazil	3	5	8	Netherlands	1	-	1
Chile	-	1	1	Nigeria	3	-	3
China	192	170	362	Norway	2	2	4
Colombia	2	-	2	Pakistan	2	-	2
Denmark	2	-	2	Peru	3	2	5
Ecuador	2	-	2	Philippines	1	-	1
Finland	2	-	2	Saudi Arabia	1	-	1
France	-	1	1	South Korea	-	1	1
Germany	5	5	10	Sri Lanka	-	1	1
Ghana	-	1	1	Sweden	3	-	3
Guatemala	-	1	1	Switzerland	-	2	2
Iceland	1	-	1	Taiwan	51	37	88
India	6	2	8	Tanzania	1	1	2
Indonesia	7	8	15	Thailand	2	1	3
Iran	1	1	2	Turkey	5	1	6
Jamaica	1	-	1	UK	3	1	4
Japan	47	89	136	UAE	2	1	3
Kenya	1	1	2	USA	4	2	6
Rep. Of Korea	61	55	116	Venezuela	3	3	6
Lithuania	-	1	1	Unknown	4	1	5
				Total			873

Source: Office of Institutional Research and Planning

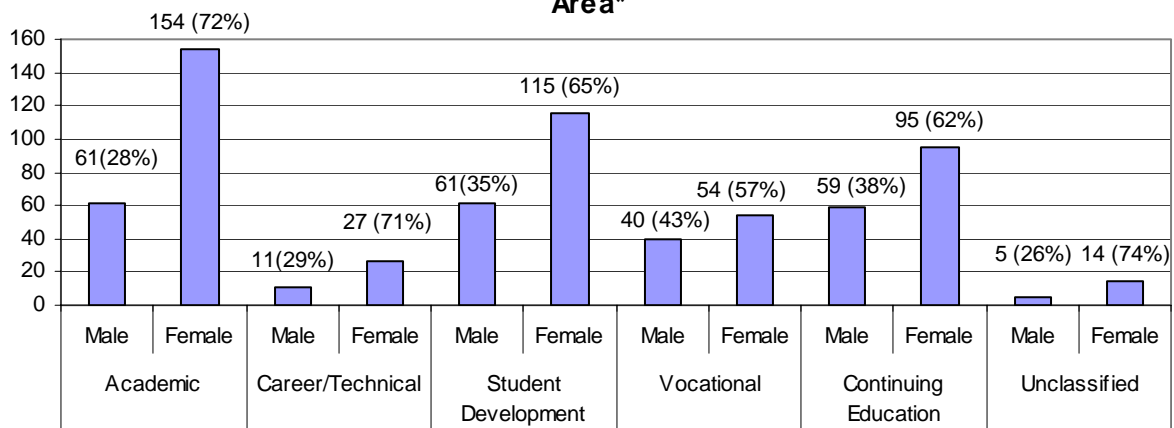
FIRST NATIONS STUDENT ANNUAL UNDUPLICATED HEADCOUNT 2002-2003*

First Nations Gender Distribution		
Male	Female	Total
237	459	696

First Nations Gender Distribution



Distribution of First Nations Students by Gender and by Program Area*

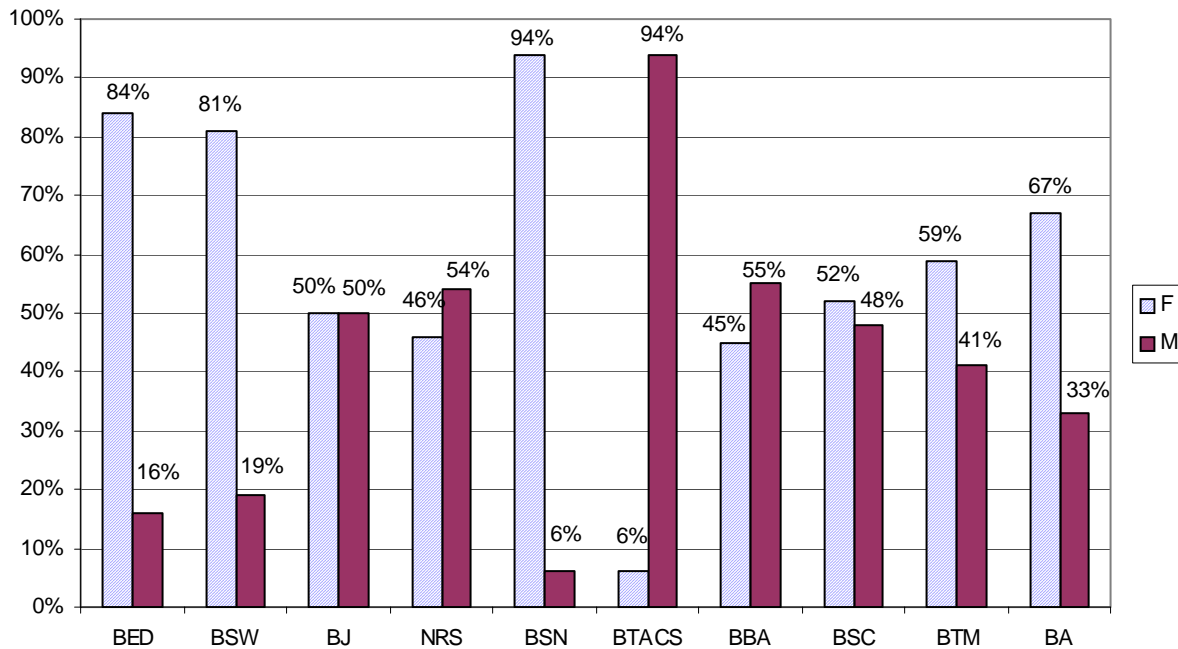


*Please note that where information has been provided for First Nations students these figures do not reflect the full enrolment at UCC of Aboriginal Peoples of Canada (Status, Metis, Inuit, Non-Status or Aboriginal Descent) due to the self-identification box on the UCC application form.

GENDER DISTRIBUTION BY DEGREE: SUMMER 2002 – WINTER 2003

GENDER DISTRIBUTION BY DEGREE					
Degree	F	M	TOTAL	F	M
BED	87	17	104	84%	16%
BSW	103	25	128	81%	19%
BJ	26	26	52	50%	50%
NRS	53	62	115	46%	54%
BSN	260	16	276	94%	6%
BTACS	1	17	18	6%	94%
BBA	342	427	769	45%	55%
BSC	602	554	1156	52%	48%
BTM	57	39	96	59%	41%
BA	1463	712	2175	67%	33%
TOTAL	2994	1895	4889	61%	39%

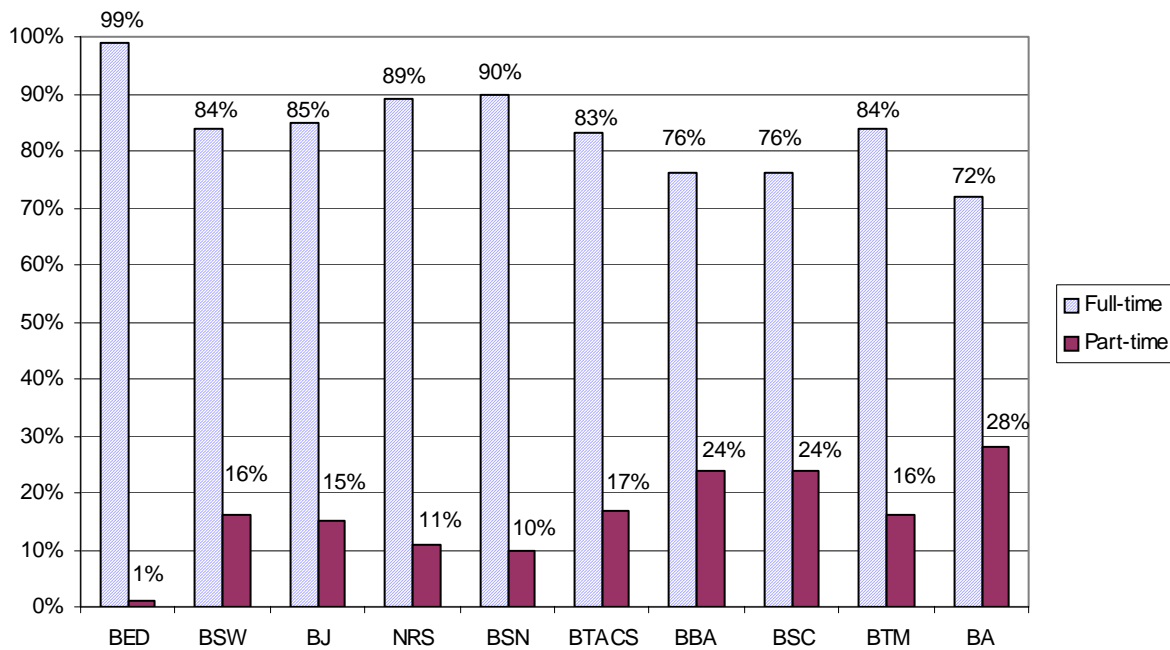
Gender Distribution by Degree: 2002-2003



**FULL-TIME/PART-TIME DISTRIBUTION BY DEGREE:
SUMMER 2002 – WINTER 2003**

FULL-TIME/PART-TIME DISTRIBUTION BY DEGREE					
Degree	Full-time	Part-time	TOTAL	Full-time	Part-time
BED	103	1	104	99%	1%
BSW	107	21	128	84%	16%
BJ	44	8	52	85%	15%
NRS	102	13	115	89%	11%
BSN	249	27	276	90%	10%
BTACS	15	3	18	83%	17%
BBA	641	128	769	76%	24%
BSC	877	279	1156	76%	24%
BTM	81	15	96	84%	16%
BA	1558	617	2175	72%	28%
TOTAL	3777	1112	4889	77%	23%

Full-time/Part-time Distribution by Degree: 2002-2003



Source: Office of Institutional Research and Planning

AVERAGE CLASS SIZE KAMLOOPS CAMPUS: FALL 2002

Note: Low refers to lowest class size, High refers to highest class size and Ave refers to average class size.

Faculty of Arts										
Program	1st Year			2nd Year			3rd & 4th Year			Average All Years
	Low	High	Ave	Low	High	Ave	Low	High	Ave	
Anthropology	77	79	79	35	59	45	12	41	27	47
English	7	35	26	19	59	29	19	36	28	27
Geography	33	81	54	33	81	46	15	54	34	44
Fine Arts	17	65	24	9	28	17	12	23	18	21
History	37	71	49	33	42	38	13	44	35	40
Journalism	-	-	-	-	-	-	7	30	13	13
Modern Languages	10	27	23	9	25	18	-	-	-	22
Philosophy	30	90	59	26	33	29	22	35	29	38
Political Studies	42	67	55	22	24	23	5	36	25	36
Psychology	29	80	47	27	62	39	25	34	29	40
Sociology	29	79	44	29	46	39	35	45	41	42
Theatre & Music	23	39	29	12	24	19	6	24	14	23

Faculty of Science										
Program	1st Year			2nd Year			3rd & 4th Year			Average All Years
	Low	High	Ave	Low	High	Ave	Low	High	Ave	
Animal Health Technology	24	24	24	6	24	13	-	-	-	13
Astronomy	54	54	54	9	9	9	-	-	-	33
Biological Sciences	24	83	68	16	97	61	9	66	30	48
Chemistry	16	82	57	31	60	50	6	22	13	35
Geology	62	62	62	-	-	-	7	12	10	28
Horticulture	21	22	22	-	-	-	-	-	-	22
Natural Resource Sciences	43	43	43	11	31	21	8	24	24	25
Physics	19	60	44	10	15	13	9	15	12	32
Respiratory Therapy	51	51	51	33	52	47	-	-	-	48

School of Advanced Information Technologies & Mathematics										
Program	1st Year			2nd Year			3rd & 4th Year			Average All Years
	Low	High	Ave	Low	High	Ave	Low	High	Ave	
Computer Automated Systems Technician*	-	-	-	14	16	15	-	-	-	15
Computer Systems: Operations & Management	30	30	30	29	32	31	-	-	-	30
Computer Systems Technician*	-	-	-	10	10	10	-	-	-	10
Computing Science	12	40	30	22	33	27	2	22	12	22

Source: Office of Institutional Research and Planning

School of Advanced Information Technologies & Mathematics cont'										
Program	1st Year			2nd Year			3rd & 4th Year			Average All Years
	Low	High	Ave	Low	High	Ave	Low	High	Ave	
Core (1 st Yr CAST, CTEC & TCOM)*	9	15	12	-	-	-	-	-	-	12
Digital Art & Design	-	-	-	20	20	20	-	-	-	20
Engineering Design & Drafting	7	30	24	24	29	26	-	-	-	25
Mathematics & Statistics	14	41	33	8	38	29	6	27	17	31
Telecommunications Technician*	-	-	-	17	17	17	-	-	-	17

*Core Electronics is a prerequisite to the CAST, CTEC, and TCOM specialties and constitutes the first 2 semesters for each of these programs (UCC Calendar 2002-2003).

School of Business & Economics										
Program	1st Year			2nd Year			3rd & 4th Year			Average All Years
	Low	High	Ave	Low	High	Ave	Low	High	Ave	
Accounting	4	39	29	24	29	27	-	-	-	28
Administrative Assistant	31	31	31	-	-	-	-	-	-	31
Economics	33	58	48	8	55	26	7	29	16	29
Management	29	32	31	18	99	43	12	47	31	35
Marketing	-	-	-	14	22	19	-	-	-	19

School of Education										
Program	1st Year			2nd Year			3rd & 4th Year			Average All Years
	Low	High	Ave	Low	High	Ave	Low	High	Ave	
Early Childhood Education	24	26	25	10	13	11	-	-	-	18
Bach. of Education	-	-	-	-	-	-	24	54	30	30

School of Nursing										
Program	1st Year			2nd Year			3rd & 4th Year			Average All Years
	Low	High	Ave	Low	High	Ave	Low	High	Ave	
Home Sup./Resident Care	21	27	24	-	-	-	-	-	-	24
Nursing	9	36	20	30	34	32	15	45	30	28

School of Social Work										
Program	1st Year			2nd Year			3rd & 4th Year			Average All Years
	Low	High	Ave	Low	High	Ave	Low	High	Ave	
Human Service Programs	20	27	23	17	21	19	-	-	-	22
Social Work	-	-	-	29	29	29	7	25	16	17

School of Tourism										
Program	1st Year			2nd Year			3rd & 4th Year			Average All Years
	Low	High	Ave	Low	High	Ave	Low	High	Ave	
Adventure	6	26	18	3	27	14	-	-	-	16
Bach. Tourism Mngt.	-	-	-	-	-	-	8	23	15	15
Professional Cook Training	11	17	14	-	-	-	-	-	-	14
Retail Meat Processing	14	14	14	-	-	-	-	-	-	14
Tourism Cert. & Dipl. Progr.	11	28	21	14	39	25	-	-	-	22

Division of Student Development													
Discipline	030 Courses			040 Courses			050 Courses			060 Courses			All Courses
	Low	High	Ave	Low	High	Ave	Low	High	Ave	Low	High	Ave	
BIOL	-	-	-	-	-	-	-	-	-	21	26	24	24
CHEM	-	-	-	-	-	-	21	26	24	19	19	19	23
COMP	-	-	-	14	14	14	16	35	28	11	28	20	23
EDCP	-	-	-	19	19	19	-	-	-	-	-	-	19
ENGL	26	26	26	9	17	13	25	31	28	22	28	26	23
MATH	26	26	26	23	24	24	32	38	33	31	37	33	31
PHYS	-	-	-	-	-	-	26	29	28	-	-	-	28
SINC	-	-	-	-	-	-	10	10	10	-	-	-	10
SOSC	-	-	-	-	-	-	-	-	-	20	20	20	20
STSS	-	-	-	-	-	-	24	24	24	-	-	-	24

School of Trades							
Program	1st Year			2nd Year			Average All Years
	Low	High	Ave	Low	High	Ave	
Automotive Service Technician	16	16	16	-	-	-	16
Carpentry Trade Entry	13	13	13	-	-	-	13
Commercial Transport Vehicle Mechanic	15	16	16	-	-	-	16
Electrical Trade Entry	16	16	16	-	-	-	16
Heavy Duty Mechanics Trade Entry	11	16	14	-	-	-	14
Marine Inboard/Outboard & Outdoor Power Equipment Technician	14	14	14	-	-	-	14
Partsperson	3	11	6	-	-	-	6
Piping Trade Entry	16	16	16	-	-	-	16
Welding (Level C)	16	16	16	-	-	-	16
Computer Manufacturing	4	4	4	6	6	6	5

AVERAGE CLASS SIZE WILLIAMS LAKE CAMPUS: FALL 2002

Faculty of Arts							
Program	1st Year			2nd Year			Average All Years
	Low	High	Ave	Low	High	Ave	
Anthropology	34	34	34	-	-	-	34
English	11	25	15	13	13	13	15
History	35	35	35	-	-	-	35
Philosophy	22	22	22	-	-	-	22
Political Studies	20	20	20	-	-	-	20
Psychology	19	40	28	12	19	15	21
Sociology	40	40	40	17	17	17	29

Faculty of Science							
Program	1st Year			2nd Year			Average All Years
	Low	High	Ave	Low	High	Ave	
Biological Sciences	13	22	17	-	-	-	17
Chemistry	8	9	9	-	-	-	9
Physics	3	3	3	-	-	-	3

Computing Science & Mathematics							
Program	1st Year			2nd Year			Average All Years
	Low	High	Ave	Low	High	Ave	
Computing Science	18	18	18	-	-	-	18
Mathematics	18	19	19	-	-	-	19

Early Childhood Education							
Program	1st Year			2nd Year			Average All Years
	Low	High	Ave	Low	High	Ave	
Early Childhood Education	14	14	14	-	-	-	14

Human Service Worker Programs							
Program	1st Year			2nd Year			Average All Years
	Low	High	Ave	Low	High	Ave	
Human Service Worker	18	19	18	2	6	4	14

Management							
Program	1st Year			2nd Year			Average All Years
	Low	High	Ave	Low	High	Ave	
Accounting	21	21	21	9	9	9	15
Administrative Assistant	19	19	19	-	-	-	19
Management	14	15	15	29	29	29	19

Source: Office of Institutional Research and Planning

Nursing							
Program	1st Year			2nd Year			Average All Years
	Low	High	Ave	Low	High	Ave	
Nursing	19	20	20	-	-	-	20

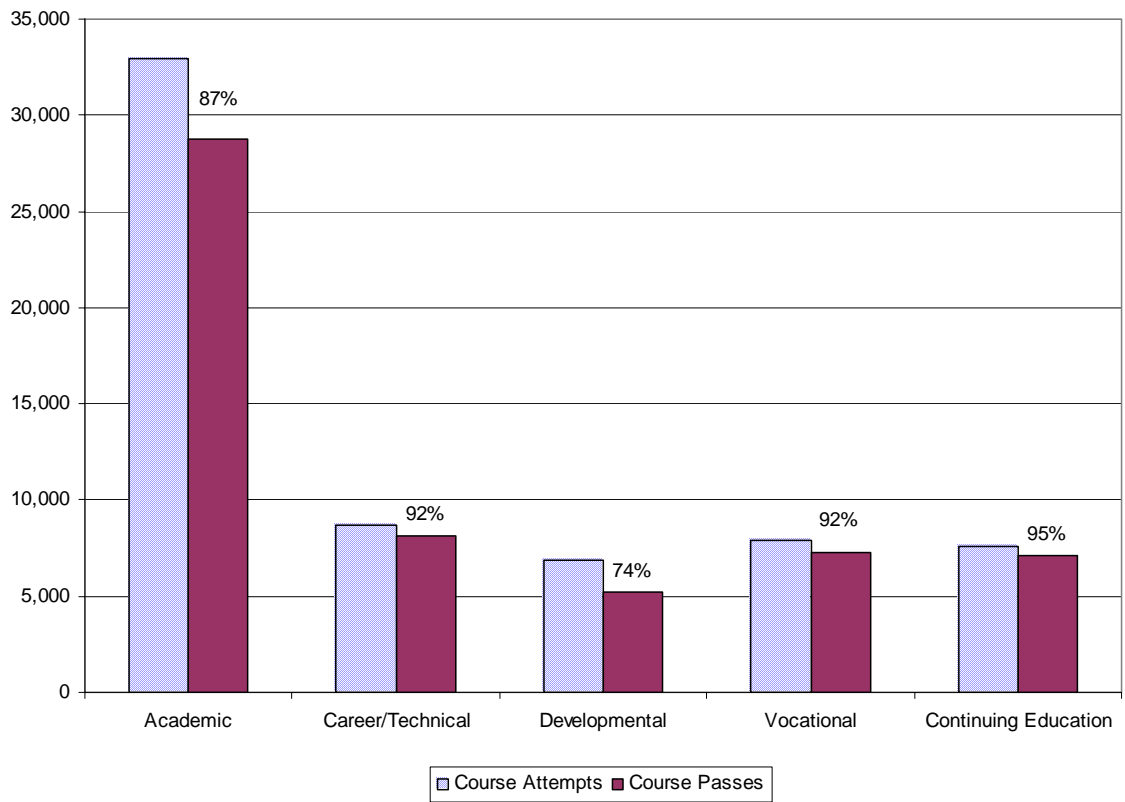
Trades & Technology							
Program	1st Year			2nd Year			Average All Years
	Low	High	Ave	Low	High	Ave	
Automotive Service Technician	2	10	6	-	-	-	6
Heavy Duty Mechanics Trade Entry	1	3	2	-	-	-	2
Welding (Level C)	1	10	6	-	-	-	6

Division of Student Development													
Discipline	030 Courses			040 Courses LHA			050 Courses			060 Courses			All Courses
	Low	High	Ave	Low	High	Ave	Low	High	Ave	Low	High	Ave	
BIOL	-	-	-	-	-	-	11	11	11	-	-	-	11
CHEM	-	-	-	-	-	-	17	17	17	-	-	-	17
COMP	-	-	-	15	15	15	9	9	9	-	-	-	13
ENGL	13	13	13	2	13	8	15	15	15	22	22	22	13
MATH	1	15	8	1	22	12	21	21	21	17	17	17	13
PHYS	-	-	-	-	-	-	15	15	15	-	-	-	15
SOSC	-	-	-	-	-	-	-	-	-	11	11	11	11
STSS	-	-	-	-	-	-	10	10	10	-	-	-	10

COURSE PASS RATES 2002-2003 BY MAJOR PROGRAM CATEGORY

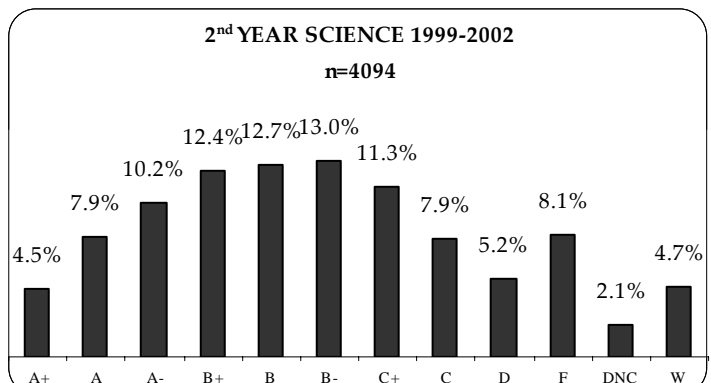
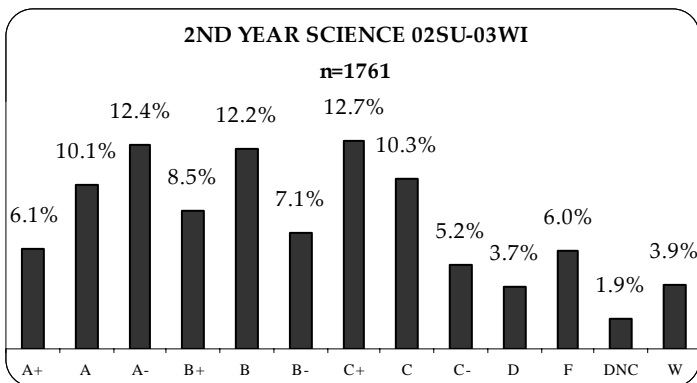
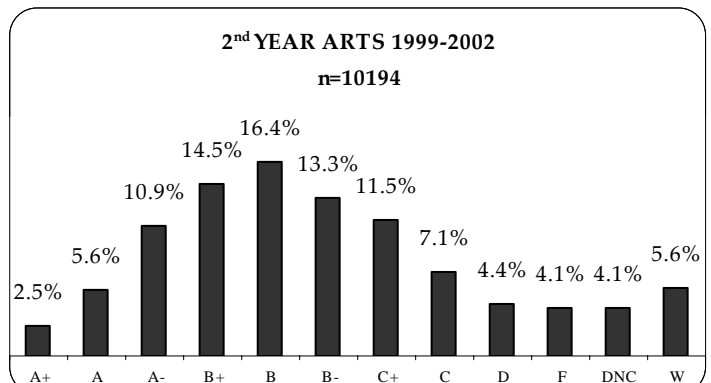
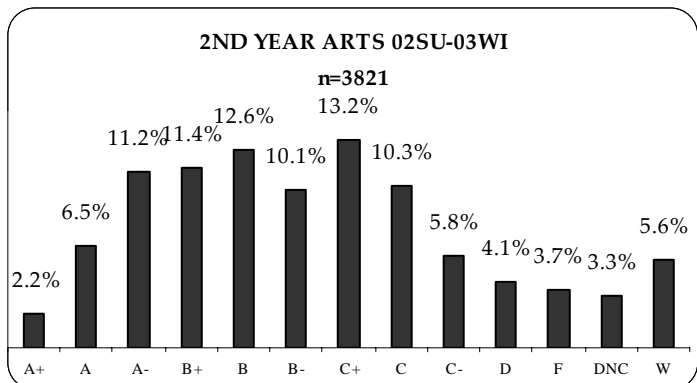
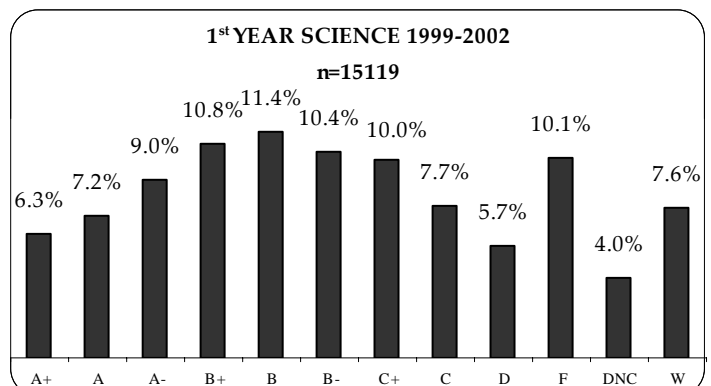
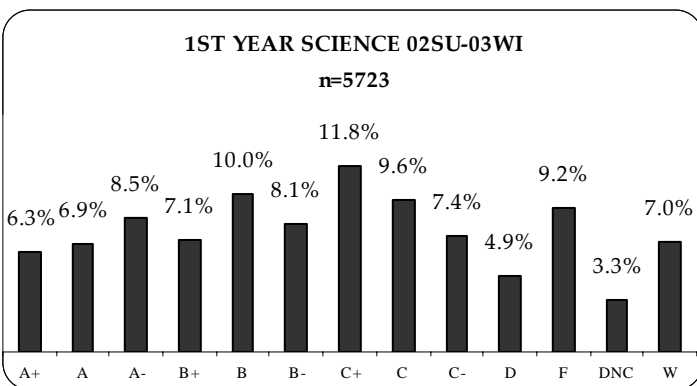
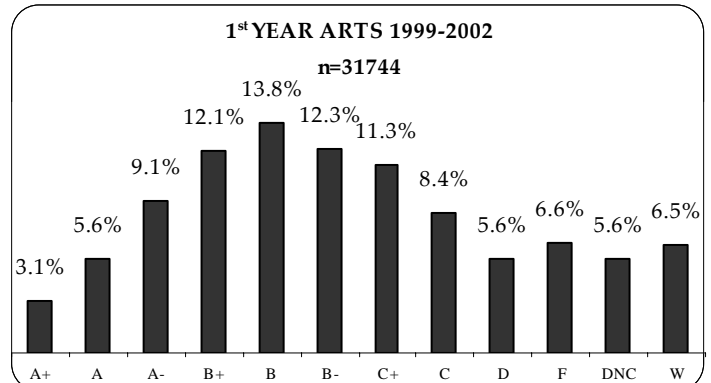
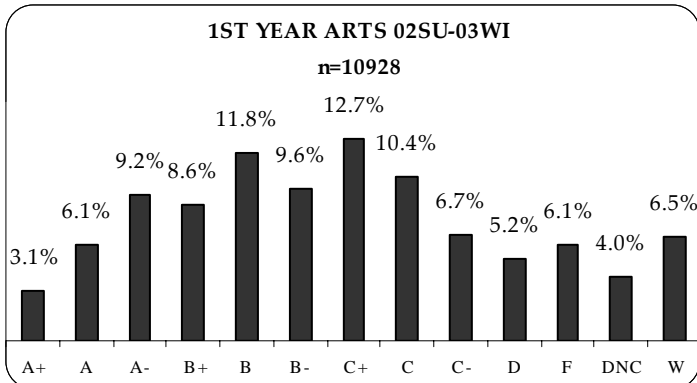
	Course Attempts	Course Passes	Pass Rate
Academic	32,936	28,753	87%
Career/Technical	8,668	8,163	94%
Developmental	6,884	5,183	75%
Vocational	7,933	7,302	92%
Continuing Education	7,549	7,109	94%
Total	63,970	56,510	88%

Course Pass Rates 2002-2003



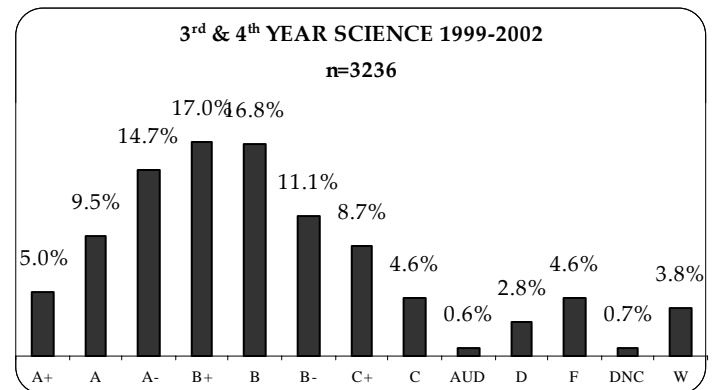
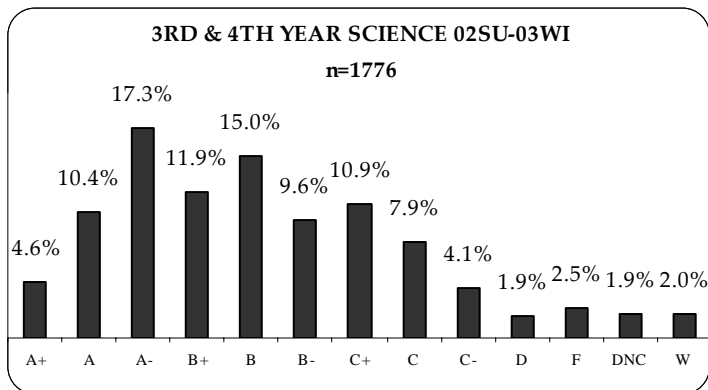
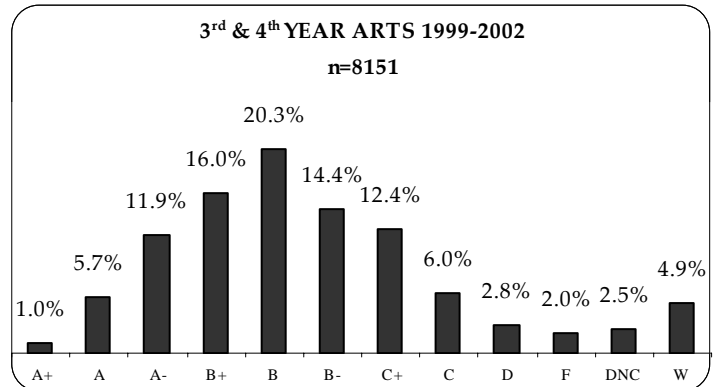
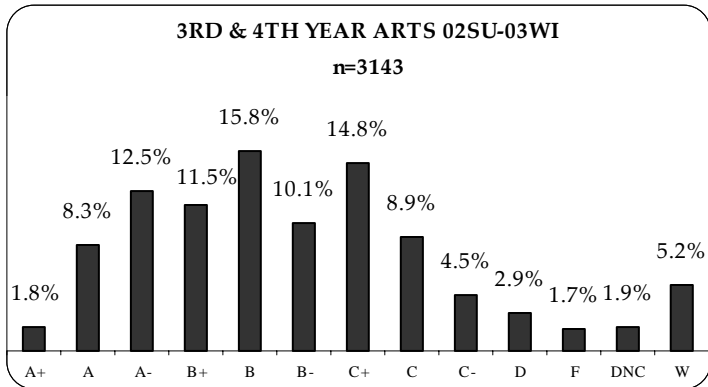
UCC GRADE DISTRIBUTIONS

UCC ACADEMIC GRADE DISTRIBUTIONS

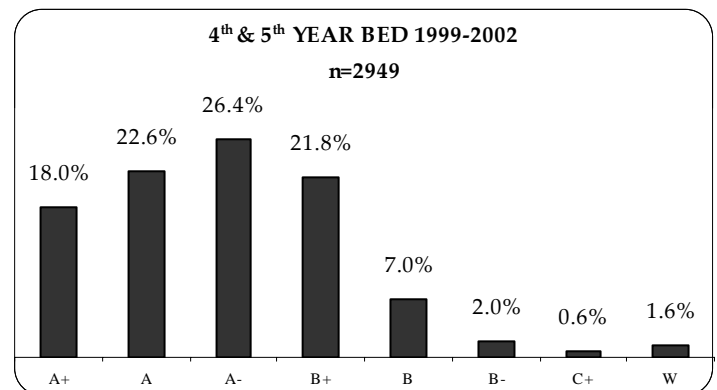
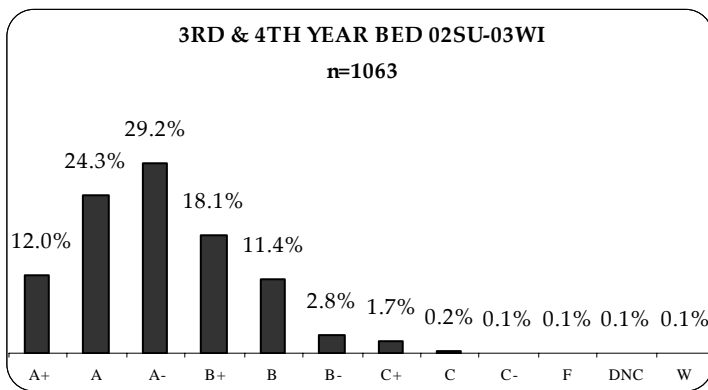
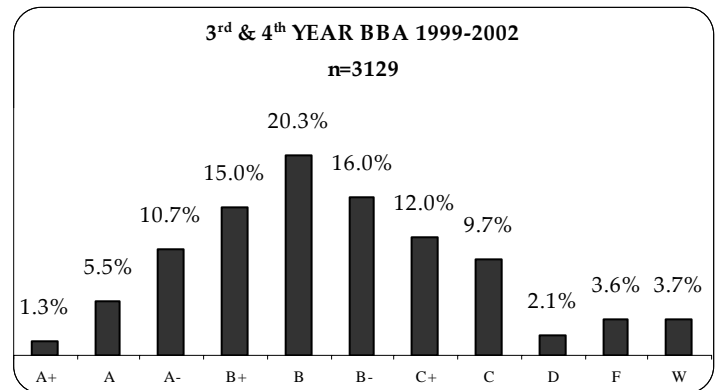
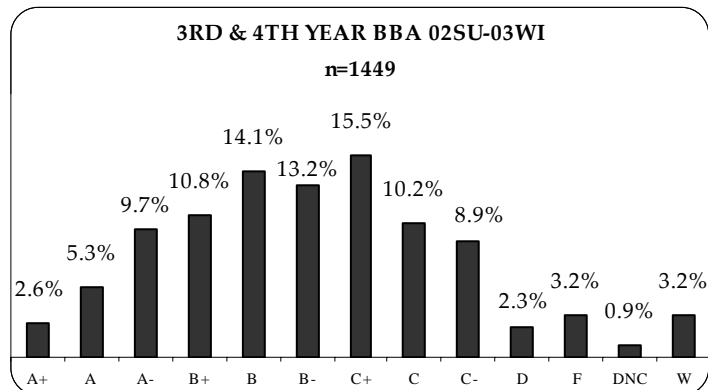


Source: Office of Institutional Research and Planning

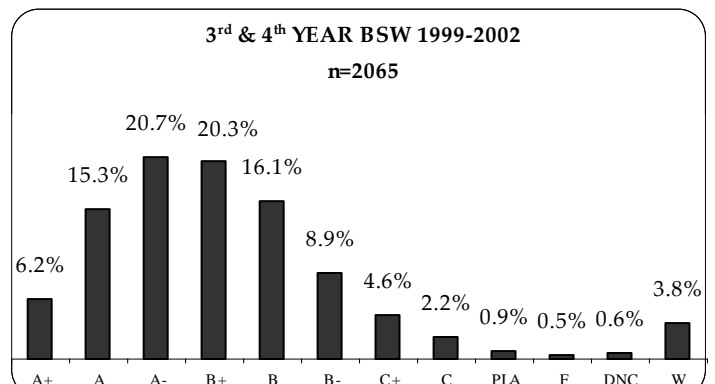
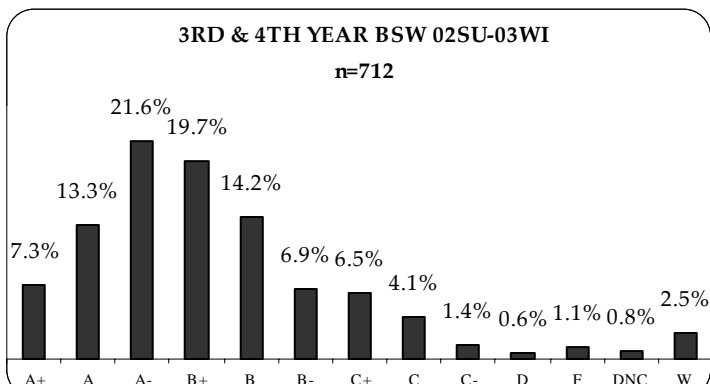
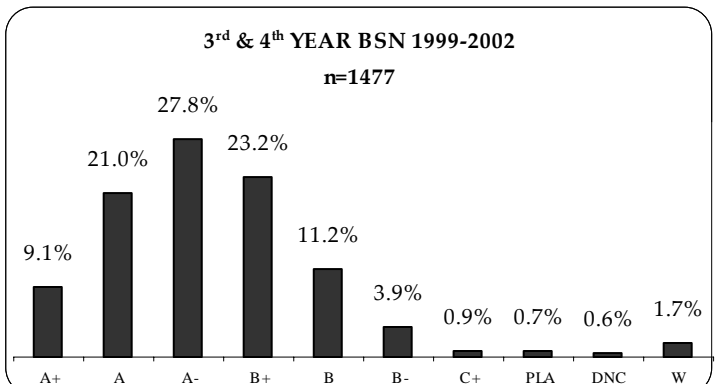
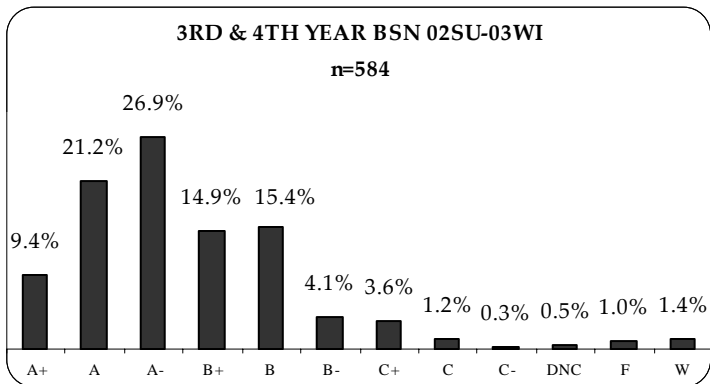
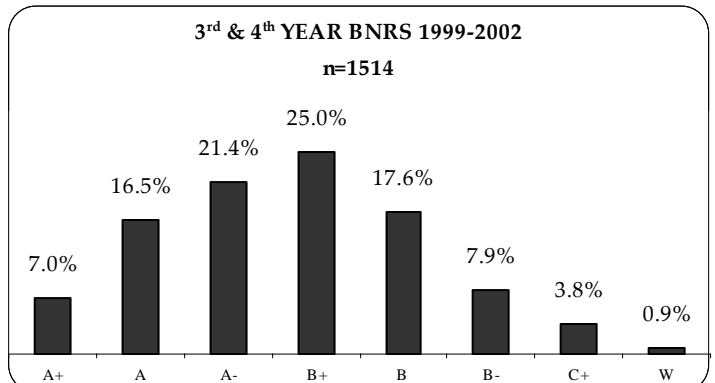
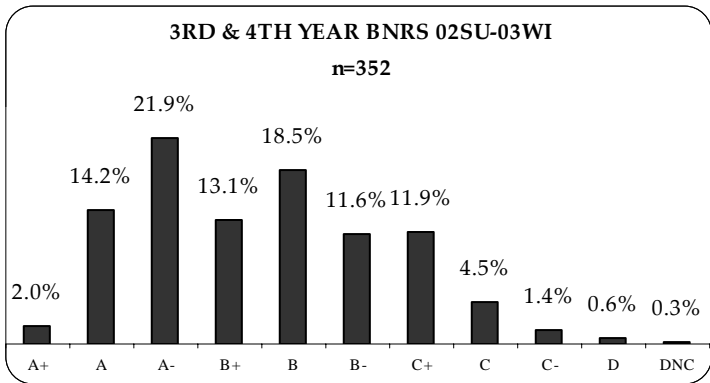
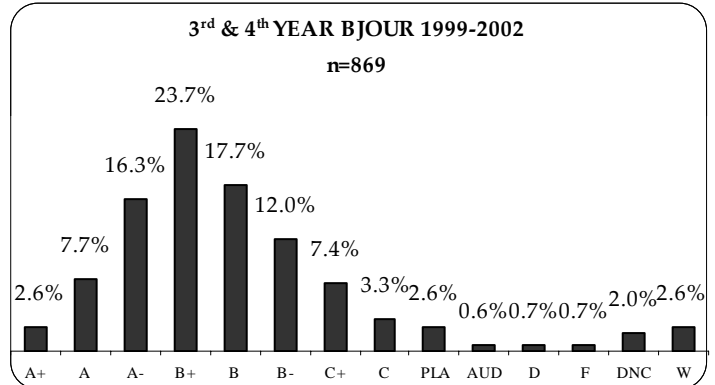
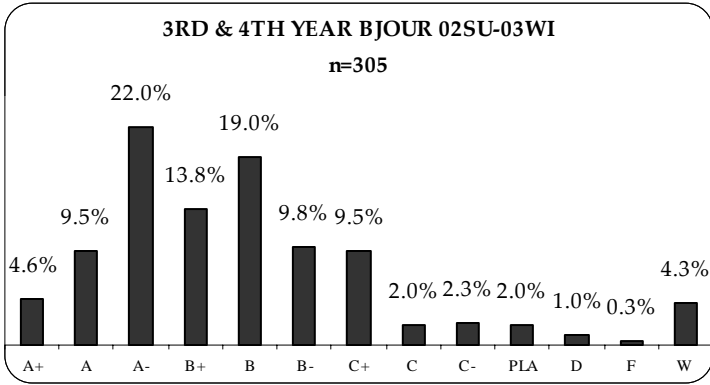
UCC ACADEMIC GRADE DISTRIBUTIONS



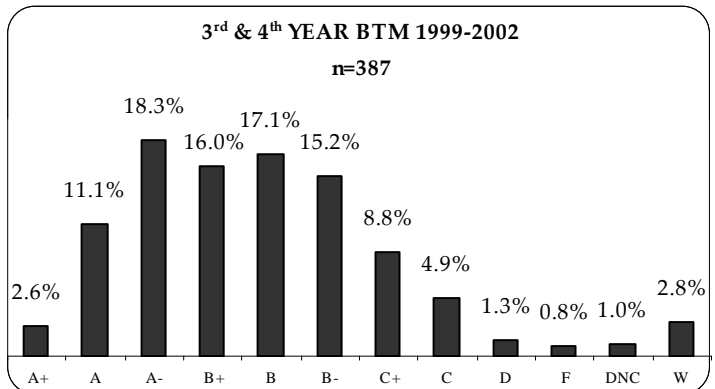
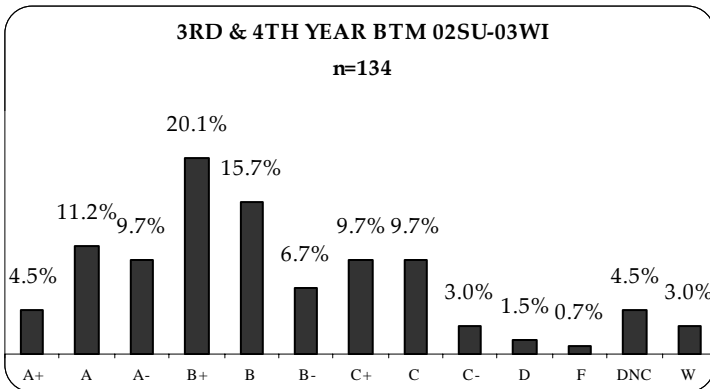
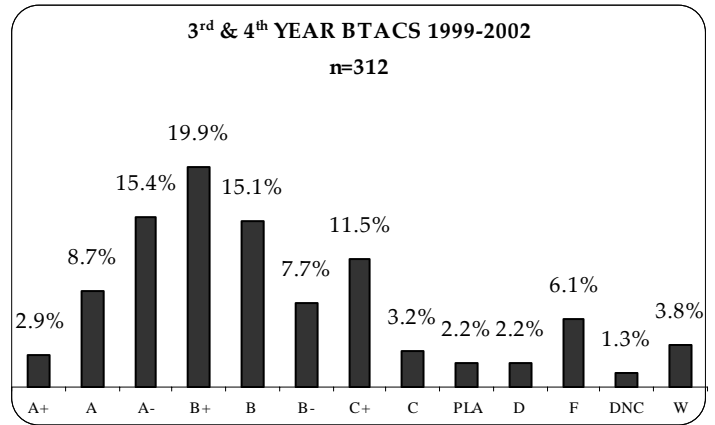
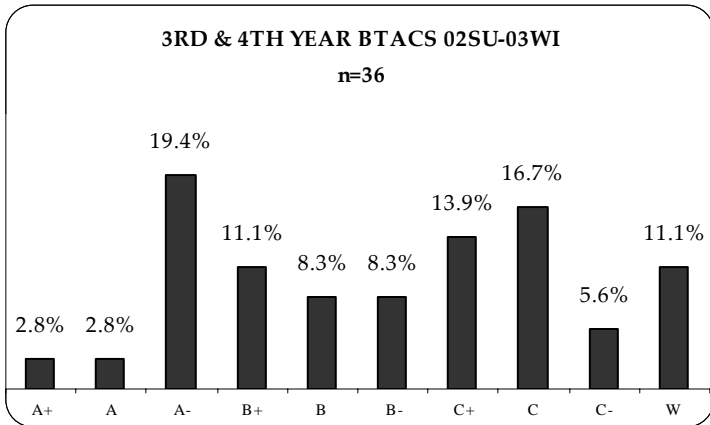
UCC PROFESSIONAL DEGREES GRADE DISTRIBUTIONS – UPPER LEVEL



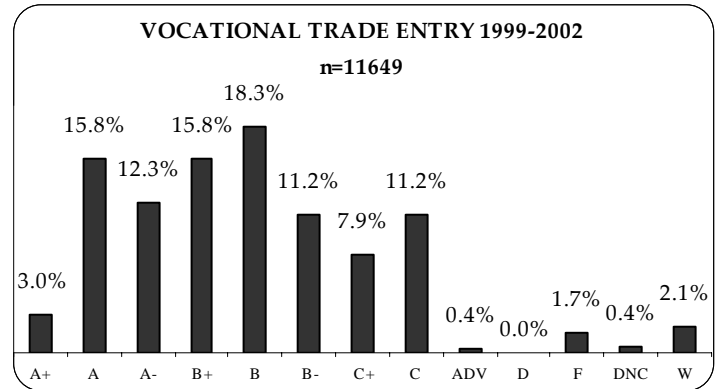
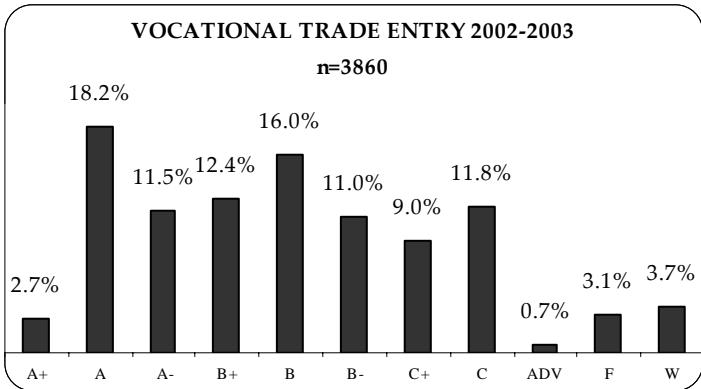
UCC PROFESSIONAL DEGREES GRADE DISTRIBUTIONS – UPPER LEVEL



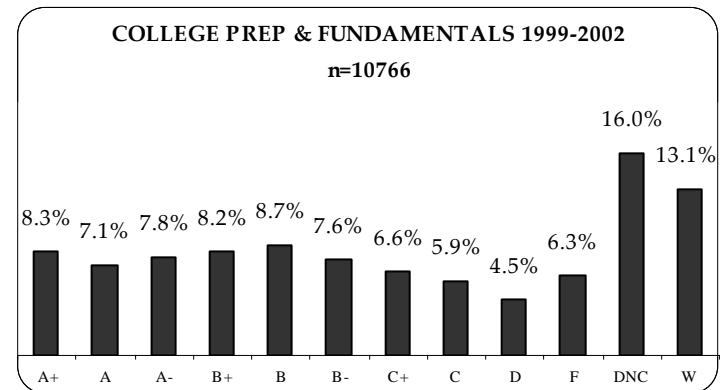
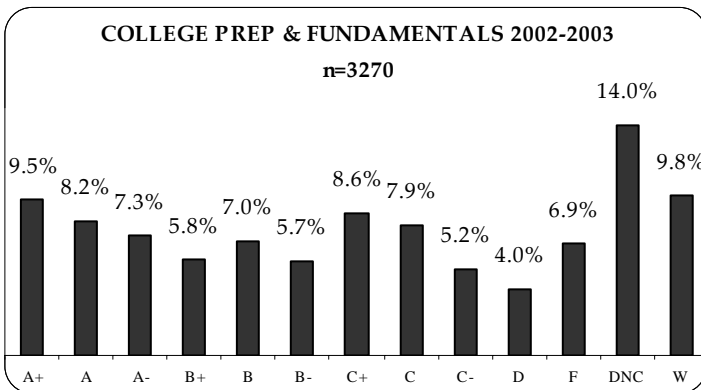
UCC PROFESSIONAL DEGREES GRADE DISTRIBUTIONS – UPPER LEVEL



UCC VOCATIONAL TRADE ENTRY GRADE DISTRIBUTIONS



UCC COLLEGE PREP & FUNDAMENTALS GRADE DISTRIBUTIONS

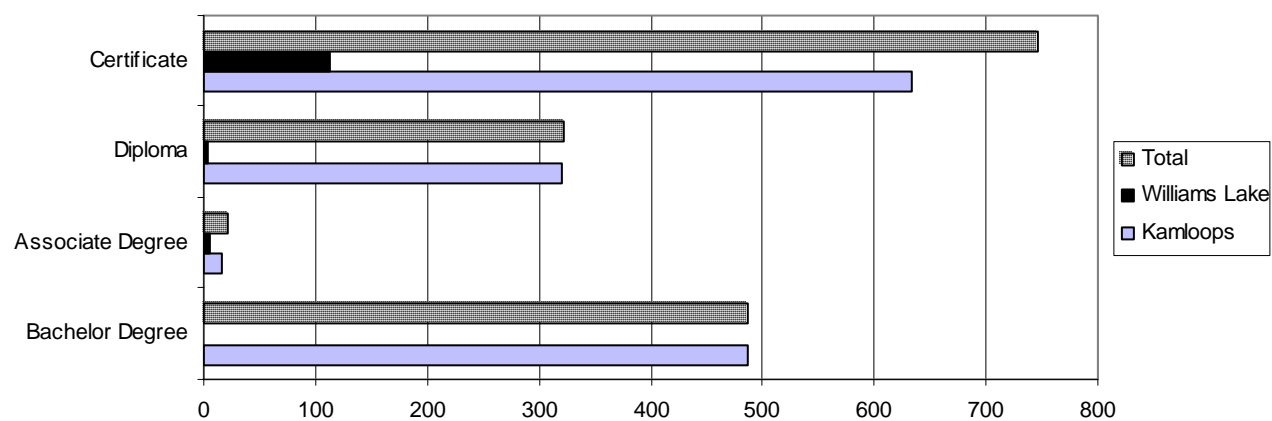


UCC CREDENTIALS AWARDED BY DIVISION 2003

Credentials Awarded By Division (Kamloops and Williams Lake): June 2003					
	Cert.	Dipl.	Assoc. Deg.	Deg.	Totals
Arts	3	15	18	154	190
School of Advanced Technologies & Mathematics	-	113	-	3	116
School of Business & Economics	89	43	-	69	201
School of Education	36	-	-	49	85
School of Nursing	41	8	-	61	110
School of Social Work & Human Service	61	15	-	44	120
School of Tourism	43	48	-	20	111
Sciences and Health Sciences	147	57	4	87	295
Student Development	94	18	-	-	112
Trades and Technology	232	6	-	-	238
Totals	746	323	22	487	1578

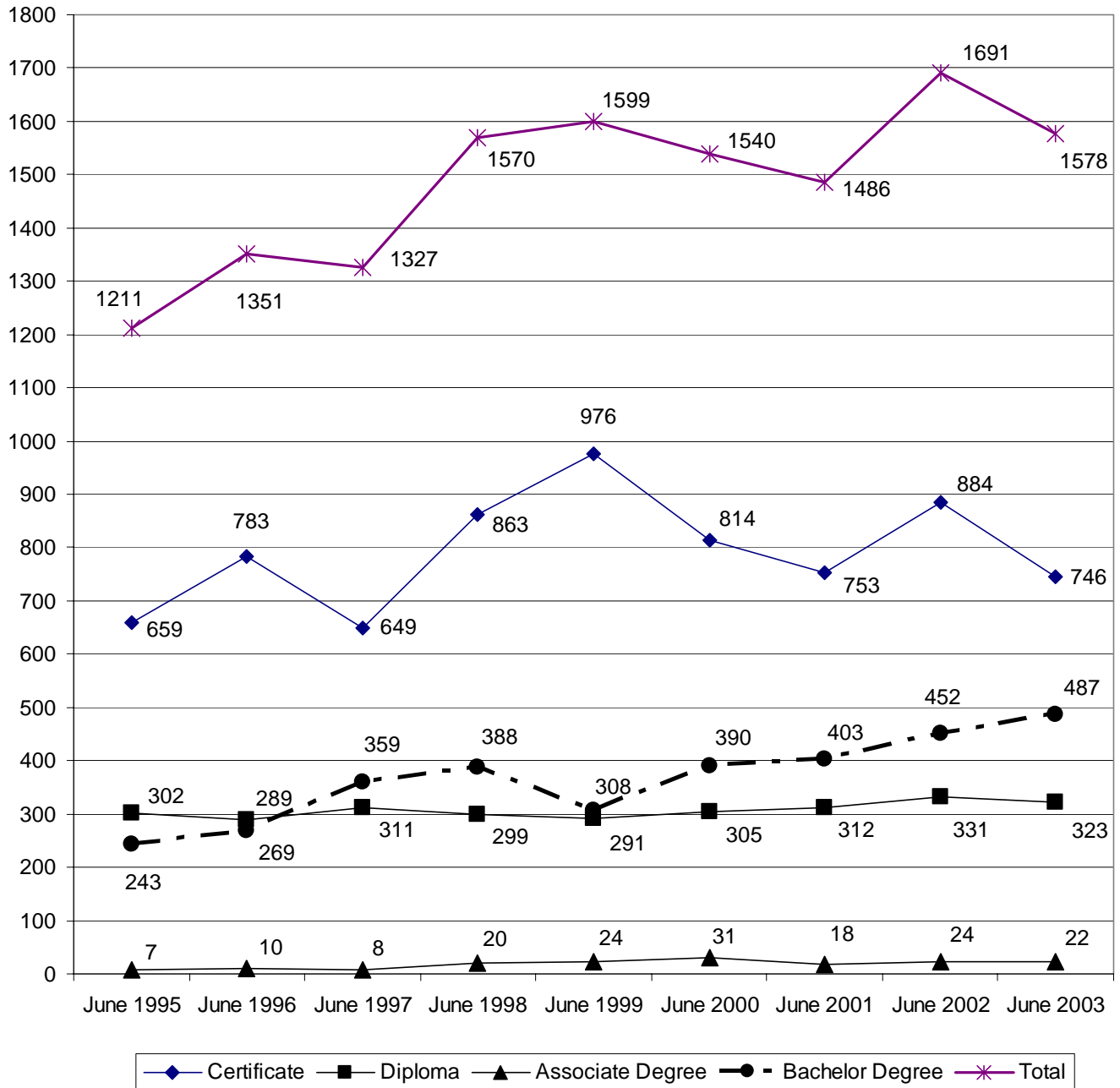
Credentials Awarded By Division (Kamloops): June 2003					
	Cert.	Dipl.	Assoc. Deg.	Deg.	Totals
Arts	3	15	13	154	185
School of Advanced Technologies & Mathematics	-	113	-	3	116
School of Business & Economics	58	43	-	69	170
School of Education	24	-	-	49	73
School of Nursing	41	8	-	61	110
School of Social Work & Human Service	41	15	-	44	100
School of Tourism	43	48	-	20	111
Sciences and Health Sciences	147	57	4	87	295
Student Development	85	15	-	-	100
Trades and Technology	191	6	-	-	197
Totals	633	320	17	487	1457

Credentials Awarded at UCC Kamloops & Williams Lake: June 2003



Source: Institutional Research and Planning

Credentials Awarded at UCC: 1995 to 2003

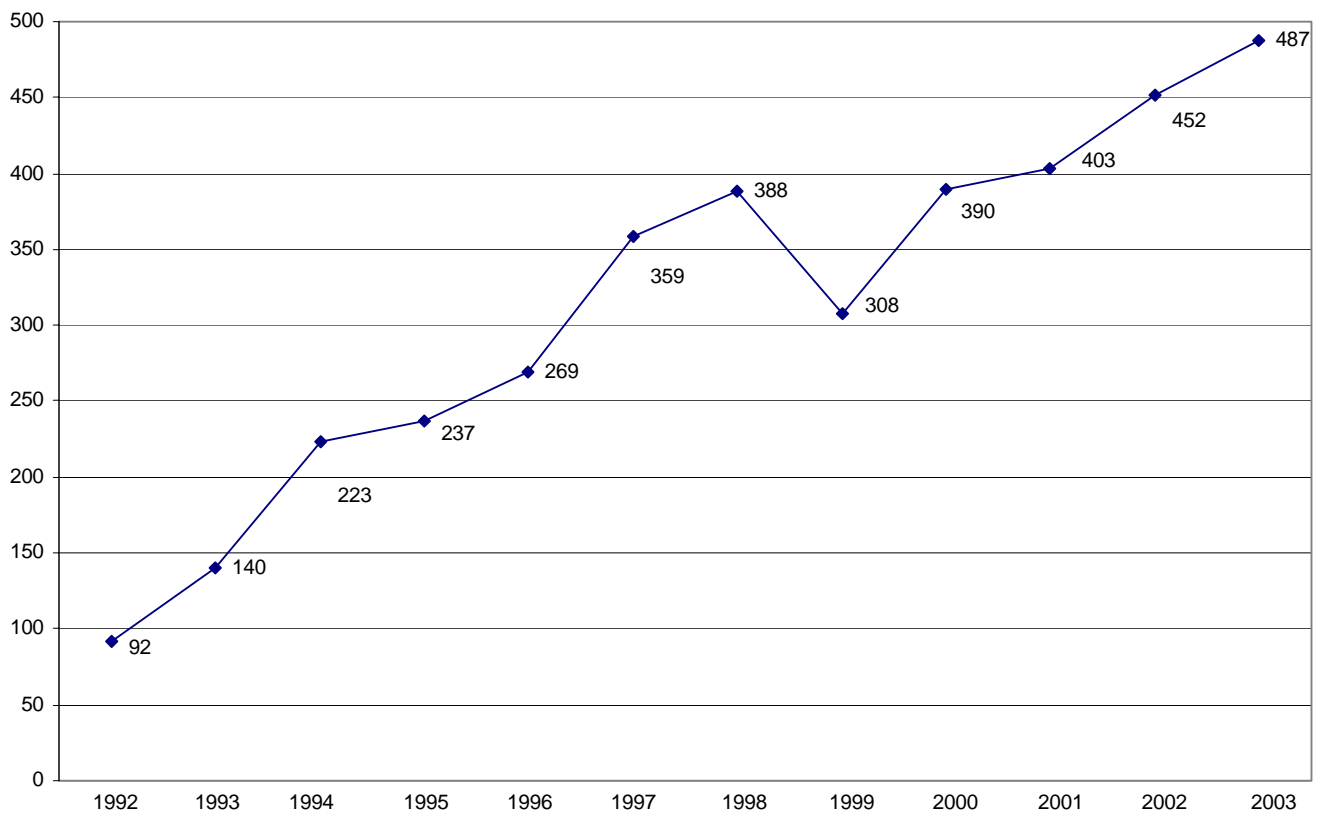


Source: Institutional Research and Planning

UCC DEGREES GRANTED: 1992-2003

	1992	1993	1994	1995	1996	1997	1998	1999	2000	2001	2002	2003	Total
Arts	24	44	66	77	88	92	96	88	95	119	116	138	1043
Science	9	15	37	35	29	42	39	39	50	42	49	62	448
Nursing	17	9	22	10	7	79	53	39	37	30	52	61	416
Social Work	4	14	20	29	24	27	53	26	35	45	50	44	371
Business	19	25	34	43	59	57	66	45	58	45	50	69	570
Nat. Res.	0	0	0	0	14	23	37	35	35	38	39	25	246
Educ	19	33	44	43	48	39	44	32	54	43	51	49	499
Appl. Comp.	0	0	0	0	0	0	0	1	5	11	12	3	32
Tourism	0	0	0	0	0	0	0	3	9	12	16	20	60
Journalism	0	0	0	0	0	0	0	0	12	18	17	16	63
TOTAL	92	140	223	237	269	359	388	308	390	403	452	487	3748

Total Number of Degrees Awarded By Year

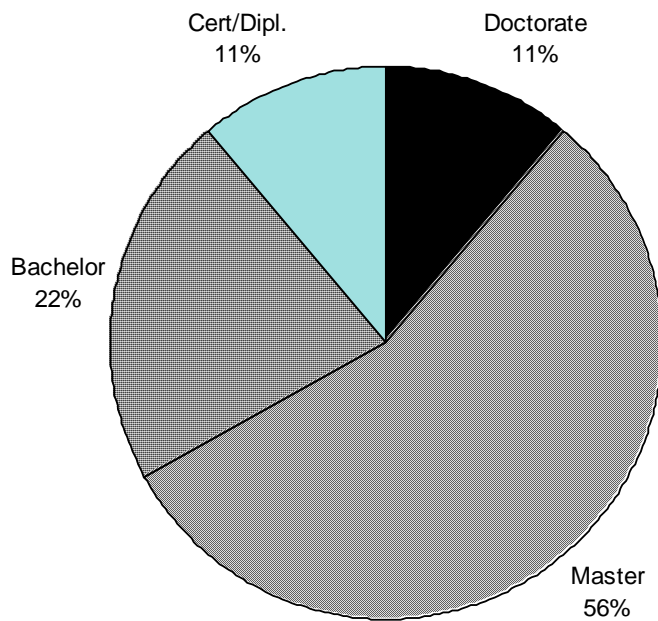


Source: Institutional Research and Planning

**WILLIAMS LAKE HEADCOUNT ENROLLMENTS:
FALL 1994 - 2002**

	1994	1995	1996	1997	1998	1999	2000	2001	2002
Academic 1 & 2	237	186	188	218	192	206	241	247	213
Career / Technical	60	51	40	65	33	44	49	61	83
Vocational	95	100	93	98	87	120	96	74	66
Developmental	190	233	233	173	191	178	158	204	120
Total	582	570	554	554	503	548	544	586	482

Williams Lake Faculty: Academic Qualifications (n=27)



WILLIAMS LAKE CAMPUS 2002-2003 FTE ENROLLMENT REPORT

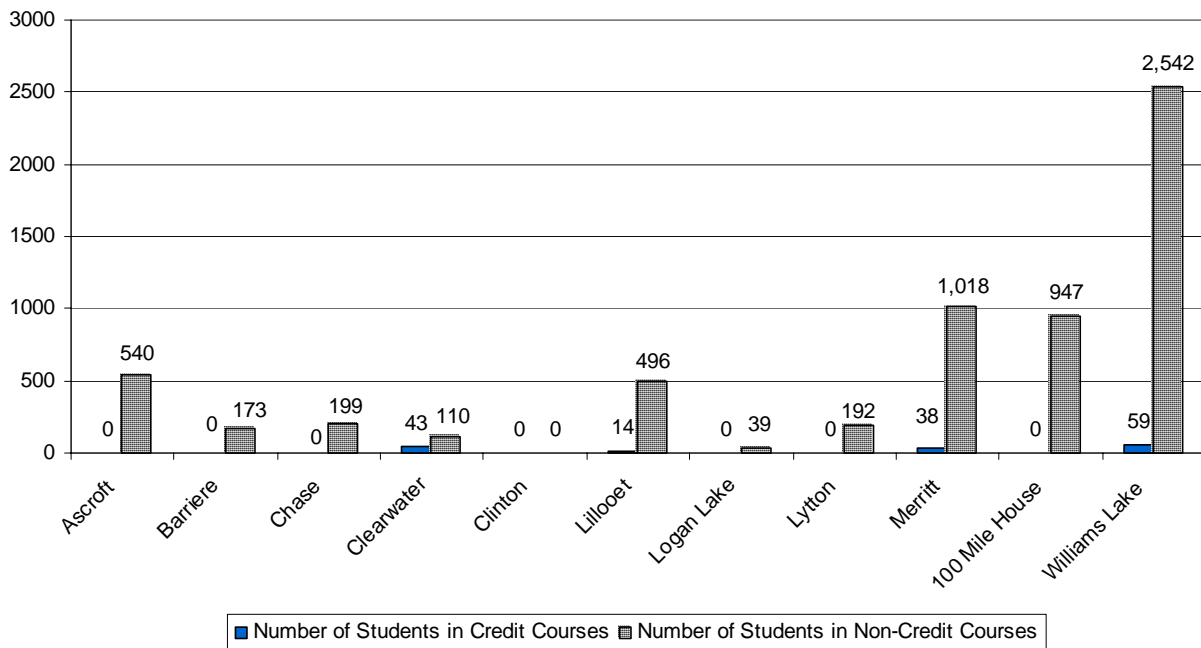
NAME	2002/03 ACTUAL SCH	2002/03 ACTUAL FTE
UNIVERSITY COLLEGE OF THE CARIBOO		
<u>ADULT BASIC EDUCATION</u>		
ENGLISH LANGUAGE TRAINING	14,329.8	15.5
ABE DEVELOPMENTAL LEVEL	43,564.0	47.1
ABE FUNDAMENTAL LEVEL	14,074.0	15.2
ASE EMPLOYMENT PREP	1,481.1	1.6
Adult Basic Education Subtotal	73,448.9	79.4
<u>CAREER-TECHNICAL</u>		
BUSINESS ADMIN/ACCOUNTING TECH	18,456.0	30.3
CHILD & YOUTH WORKER	1,657.0	2.5
NURSING	17,271.0	17.7
Career Technical Subtotal	37,384.0	50.5
<u>UNIVERSITY COLLEGE</u>		
ACADEMIC	47,186.0	82.5
B. ARTS	405.0	1.6
University College Subtotal	47,591.0	84.1
<u>VOCATIONAL</u>		
OFFICE ADMINISTRATION	23,996.5	25.9
HUMAN SERVICES	18,146.1	17.8
RESIDENTIAL CARE AIDE	6,738.5	7.3
EARLY CHILDHOOD EDUCATION	7,013.0	8.1
PT VOCATIONAL	23,223.5	18.9
Vocational Subtotal	79,117.5	78.0
<u>ENTRY LEVEL TRADES TRAINING</u>		
AUTO MECHANICS	11,790.0	9.6
HD/COMM TRANSPORT	4,440.0	3.6
WELDING C/FITTER	12,058.0	9.8
WELDING B	1,221.2	1.0
WELDING A	240.0	0.2
RESIDENTIAL CONSTRUCTION	11,004.3	8.9
COOKING	2,850.0	2.3
ELTT Subtotal	43,603.5	35.4
<u>WILLIAMS LAKE TOTAL</u>	281,144.8	327.5

Source: Prepared by the Office of VP Academic

REGIONAL EDUCATION ACTIVITY: SUMMER 2002 – WINTER 2003

Location	Summer 2002		Fall 2002		Winter 2002		Total Students for Summer, Fall, & Winter
	Students in Credit Courses	Total Students for period	Students in Credit Courses	Total Students for period	Students in Credit Courses	Total Students for period	
Ashcroft	0	244	0	134	0	162	540
Barriere	0	56	0	67	0	50	173
Chase	0	56	0	23	0	120	199
Clearwater	0	52	19	49	24	52	153
Clinton	0	0	0	0	0	0	0
Lillooet	0	89	0	208	14	213	510
Logan Lake	0	39					39
Lytton	0	105	0	0	0	87	192
Merritt	0	419	19	302	19	335	1,056
100 Mile House	0	351	0	291	0	305	947
Williams Lake	0	1,056	39	826	20	719	2,601
TOTAL	0	2,467	77	1,900	77	2,043	6,410

**Credit & Non-Credit Student Headcount By Learning Centre:
Summer 2002 - Winter 2003**



UCC EMPLOYEES

Profile of UCC Employees (As of September 2002 Payroll)

			Ongoing	Temporary	Total
Administration/Excluded	75	4	79		
Faculty*	399	152	551		
Support Staff **	228	27	255		
TOTAL	705	183	885		

* Figures for Faculty do include Sessional/Part-Time Instructors but do not include Instructors on Leave.

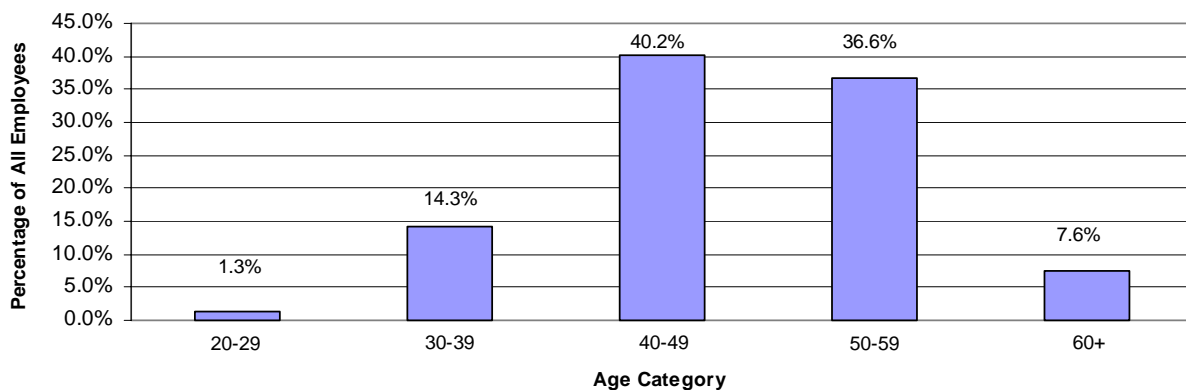
** Figures for Support Staff do not include ongoing Support Staff on Leave or Student Employees.

Age Profile of Ongoing Staff* (As of December 31, 2002)

	20-29	30-39	40-49	50-59	60+	TOTAL
Administration/Excluded	0	8	27	34	9	78
Faculty	3	57	169	154	31	414
Support Staff	7	44	111	91	18	271
TOTAL	10	109	307	279	58	763

*Discrepancies between the totals of Ongoing Staff in September and in December may be accounted for by the fact that administrative staff either left or retired by December, faculty who were not permanent in September were given permanent contracts by December, and auxiliary support staff working in September were given seniority by December.

Age Profile: All Employees



FACULTY
(Full-time and Part-time as of November 2002)

Faculties/Schools/Divisions	Full-Time	Part-Time	Total	Male	Female
Faculty of Arts	96	19	115	63	52
Faculty of Science	68	20	88	50	38
School of Adv. Info. Tech. & Math	47	2	49	41	8
School of Business	32	4	36	22	14
School of Education	14	14	28	13	15
School of Nursing	31	22	53	-	53
School of Social Work & Human Service	14	5	19	10	9
School of Tourism	22	38	60	50	10
School of Trades and Technology	29	-	29	29	-
Division of Student Development	77	25	102	28	74
Other	11	-	11	5	6
Grand Total	441	149	590	311	279
Percentage	75%	25%	100%	53%	47%

Faculty of Arts					
English & Modern Languages	39	5	44	17	27
Geography, Sociology & Anthropology	16	6	22	15	7
Journalism	5	1	6	4	2
Philosophy, History & Politics	15	2	17	14	3
Psychology	9	1	10	4	6
Visual & Performing Arts	12	4	16	9	7
Faculty Total	96	19	115	63	52
Faculty of Science					
Agriculture-Related	9	4	13	7	6
Allied Health	10	-	10	8	2
Biological Sciences	19	3	22	8	14
Natural Resource Science	9	4	13	7	6
Physical Sciences/Engineering	21	9	30	20	10
Faculty Total	68	20	88	50	38
School of Adv. Info. Tech. & Math					
Computing Science	9	-	9	8	1
Computer Information Systems Technology	7	1	8	6	2
DAAD / EDDT	7	1	8	7	1
Electronics	7	-	7	7	-
Mathematics & Statistics	17	-	17	13	4
School Total	47	2	49	41	8
School of Business					
Economics	10	1	11	10	1
Management	22	3	25	12	13
School Total	32	4	36	22	14
School of Education					
Early Childhood Education	4	1	5	1	4
Education	10	13	23	12	11
School Total	14	14	28	13	15
School of Nursing					
School Total	31	22	53	-	53
School of Social Work					
Human Service	6	2	8	3	5
Social Work	8	3	11	7	4
School Total	14	5	19	10	9

*Please note that part-time faculty numbers do not reflect accurate headcounts as some part-time faculty work for two or more departments.

Source: Office of Institutional Research and Planning

FACULTY (Full-time and Part-time as of November 2002)

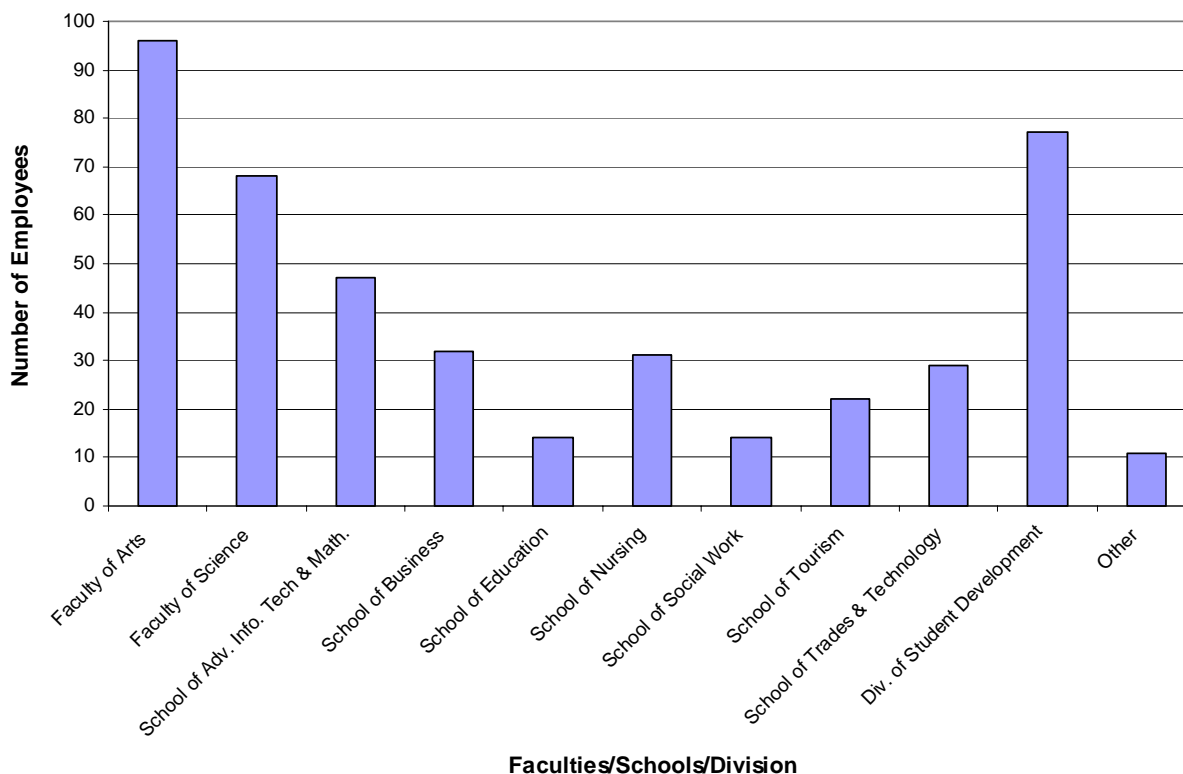
School of Tourism					
	Full-Time	Part-Time	Total	Male	Female
Adventure	6	37	43	37	6
Food Training	9	1	10	8	2
Tourism	7	-	7	5	2
School Total	22	38	60	50	10

School of Trades & Technology					
Construction Trades	15	-	15	15	-
Mechanical Trades	14	-	14	14	-
School Total	29	-	29	29	-

Division of Student Development					
College Preparation	21	6	27	11	16
College & Career Preparation (WL)	11	6	17	3	14
Co-operative & Career Education	9	-	9	3	6
Counselling	8	2	10	4	6
English as a Second Language	27	9	36	5	31
Physical Education	1	2	3	2	1
Divisional Total	77	25	102	28	74

Other					
Instructional Support Faculty	11	-	11	5	6
Total	11	-	11	5	6

Full-time Faculty by Faculties/Schools/Divisions (2002)



*Please note that part-time faculty numbers do not reflect accurate headcounts as some part-time faculty work for two or more departments.

Source: Office of Institutional Research and Planning

ACADEMIC QUALIFICATIONS OF FACULTY
(Full-time and Ongoing Faculty: Highest Qualification as of November 2002)

Faculties/Schools/Divisions	Doctoral	Masters	Profess.	Bachelors	Cert/Dipl.	Total
Faculty of Arts	51	35	-	7	3	96
Faculty of Science	21	19	4	14	10	68
School of Adv. Info. Tech. & Math	13	19	-	5	10	47
School of Business	13	14	-	5	-	32
School of Education	3	9	-	2	-	14
School of Nursing	1	25	-	4	1	31
School of Social Work & Human Service	1	10	-	2	1	14
School of Tourism	1	6	-	3	12	22
School of Trades and Technology	-	2	-	-	27	29
Division of Student Development	2	35	1	36	3	77
Other	-	8	-	2	1	11
Grand Total	106	182	5	80	68	441
Percentage	24%	41%	1%	18%	16%	100%

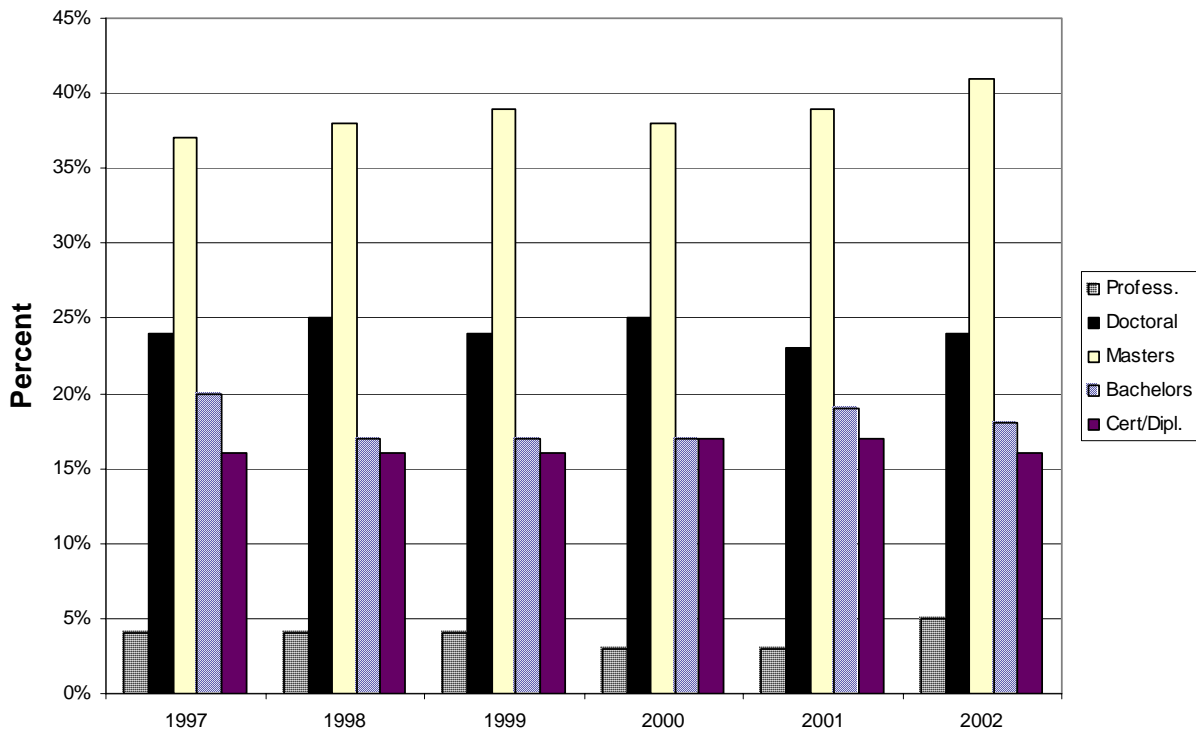
Faculty of Arts						
English & Modern Languages	18	17	-	4	-	39
Geography, Sociology & Anthropology	12	3	-	1	-	16
Journalism	1	3	-	-	1	5
Philosophy, History & Politics	12	3	-	-	-	15
Psychology	6	3	-	-	-	9
Visual & Performing Arts	2	6	-	2	2	12
Faculty Total	51	35	-	7	3	96
Faculty of Science						
Agriculture-Related	-	-	4	-	5	9
Allied Health	-	5	-	2	3	10
Biological Sciences	7	5	-	6	1	19
Natural Resource Sciences	3	3	-	3	-	9
Physical Sciences/Engineering	11	6	-	3	1	21
Faculty Total	21	19	4	14	10	68
School of Adv. Info. Tech. & Math						
Computing Science	4	4	-	1	-	9
Computer Information Systems Tech.	-	4	-	3	-	7
DAAD / EDDT	-	2	-	-	5	7
Electronics	-	1	-	1	5	7
Mathematics and Statistics	9	8	-	-	-	17
School Total	13	19	-	5	10	47
School of Business						
Economics	8	2	-	-	-	10
Management	5	12	-	5	-	22
School Total	13	14	-	5	-	32
School of Education						
Early Childhood Education	-	3	-	1	-	4
Education	3	6	-	1	-	10
School Total	3	9	-	2	-	14
School of Nursing						
School Total	1	25	-	4	1	31
School of Social Work & Human Service						
Human Service	-	3	-	2	1	6
Social Work	1	7	-	-	-	8
School Total	1	10	-	2	1	14
School of Tourism						
Adventure	-	3	-	2	1	6
Food Training	-	-	-	-	9	9
Tourism	1	3	-	1	2	7
School Total	1	6	-	3	12	22

Source: Office of Institutional Research and Planning

ACADEMIC QUALIFICATIONS OF FACULTY
(Full-time and Ongoing Faculty: Highest Qualification as of November 2002)

School of Trades & Technology	Doctoral	Masters	Profess.	Bachelors	Cert/Dipl.	Total
Construction Trades	-	1	-	-	14	15
Mechanical Trades	-	1	-	-	13	14
School Total	-	2	-	-	27	29
Division of Student Development						
College Preparation	-	7	-	14	-	21
College & Career Preparation (WL)	1	4	-	5	1	11
Co-operative & Career Education	-	4	-	3	2	9
Counselling	-	7	-	1	-	8
English as a Second Language	1	12	1	13	-	27
Physical Education	-	1	-	-	-	1
Divisional Total	2	35	1	36	3	77
Other						
Instructional Support Faculty	-	8	-	2	1	11
Total	-	8	-	2	1	11

Academic Qualifications of Faculty 1997 to 2002



Student Services 2002-2003

Assessment Centre

Assessment Centre contacts (est.)	19,534
Number of assessments conducted (est.)	2,388
Off-campus testing and other assessment activities (est.)	919
Total	22,841

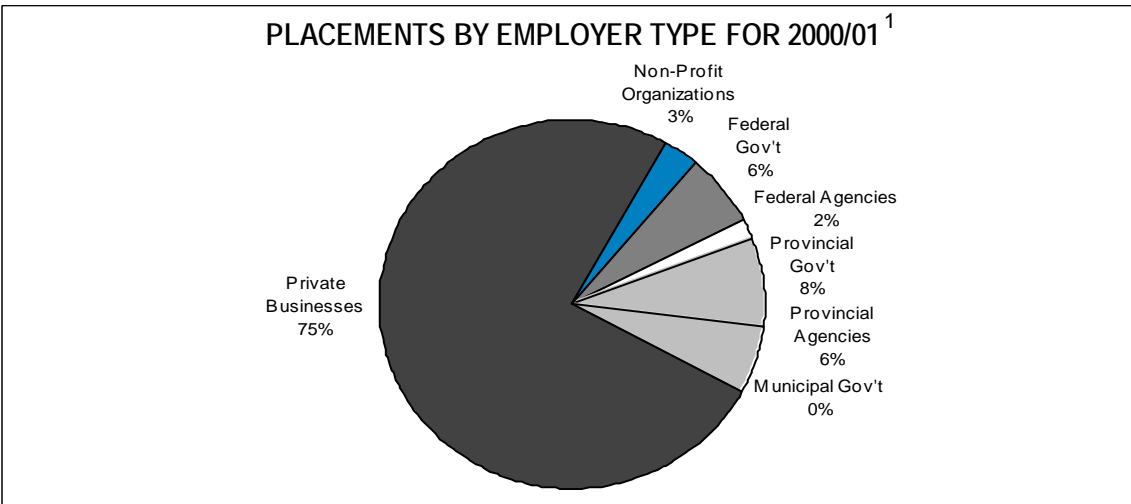
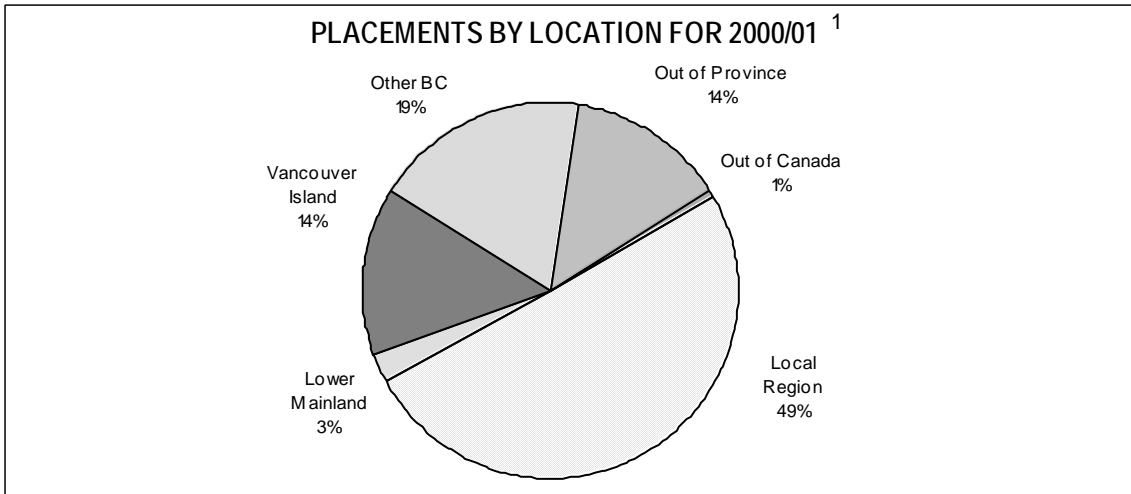
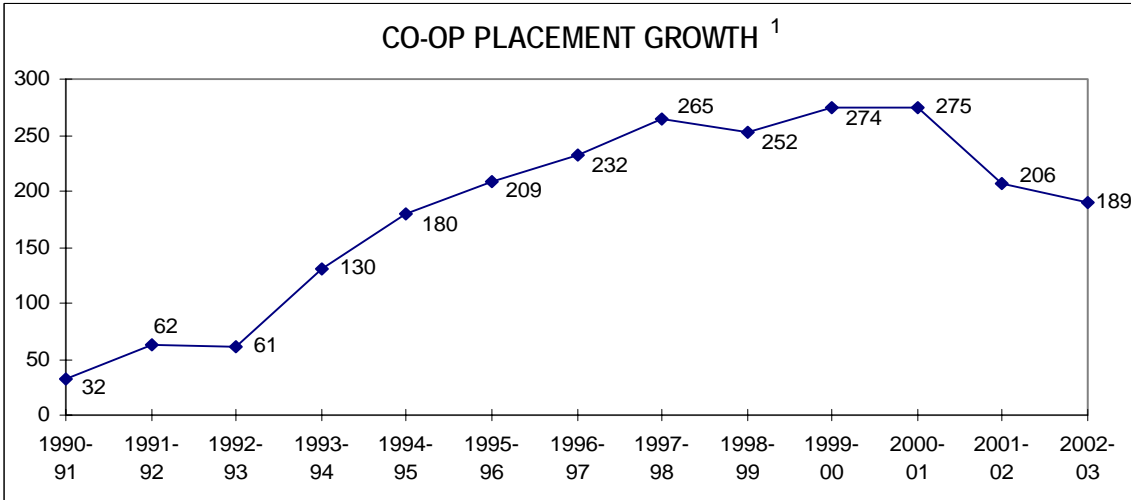
Financial Aid & Awards Office

	Applications Nominations Assessment	Awards Approved or Issued	\$ Value
BC Student Assistance *	2,690	1,848	17,278,800
Adult Basic Education Student Assistance	663	550	161,861
Special Opportunity Grants	56	45	43,763
Work Study	167	108	90,961
External Donor Awards	200	200	138,427
UCC Awards Apps/Nominations/Assessments	1,441	784	459,985
UCC Entrance Scholarships	22	22	44,063
Subtotal	5,239	3,557	18,217,860
Emergency Student Loans	140	110	47,321
Special Fee Deferrals**	450	400	260,000
Total Applications/Assessments	5,829	4,067	18,525,181
Individual Student Interviews	2,950		
Information/Application Workshop Attend.	177		
Telephone/Fax (excluding internal)	24,917		
Total Contacts	28,044		

* Actual Value not available. Estimated average award = \$9,350.

** All students who were approved for government student assistance were granted automatic deferrals.

COOPERATIVE EDUCATION



¹ Note: Co-op year is reported from September 2002 to August 2003.
Source: Cooperative and Career Education

LIBRARY SERVICES

	1996/97	1997/98	1998/99	1999/00	2000/01	2001/02	2002/03
Volumes ¹	131,818	144,106	153,484	156,576	158,515	169,624	174,267
AV Material	3,198	6,147	6,673	8,231	8,231	10,291	11,254
Back Issues Periodicals	37,962	39,562	41,500	42,400	42,400	43,400	44,500
Total	172,978	189,815	201,657	207,207	209,146	223,315	230,021

Current Periodical Subscriptions	1,746	1,206 ²	920	885	873	919	924
----------------------------------	-------	--------------------	-----	-----	-----	-----	-----

Interlibrary Loans

Articles	2,775	2,034	2,315	3,428	4,227	3,818	3,895
Books	1,239	813	909	1,013	487	469	659
Audio-Visual	270	169	175	195	41	64	91
Total	4,284	3,016	3,399	4,636	4,755	4,351	4,645

Services

User Visits	242,856	236,167	281,490	253,634	210,517	212,695	240,883
Library Classes	101	116	104	142	133	160	236
Reference Questions	32,960	30,779	21,933	22,327	18,120	19,869	18,794
Circulation	173,038	187,026	204,903	205,035	211,216	213,503	208,286

Staff (Kamloops & Williams Lake)

Administrators	1	1	1	1	1	1	1
Librarians	3	3.75	4.5	5	6	7	7
Library Technicians	4.25	4	4	4	4	4	4
Library Assistants	1	0	0	0	0	0	0
Library Clerks	9	9	9.5	9.8	9.8	10.4	10.4
Secretaries	1	1	1	1	1	1	1
Student Assistants	2	2	1.4	1.7	1.7	1.7	1.7
Total	21.25	20.75	21.40	22.50	23.50	25.10	25.10

Library Acquisitions		(in current dollars)	
2002-2003	\$ 883,091*	1995/96	\$599,126 ³
2001-2002	\$1,074,364*	1994/95	\$ 555,411
2000-2001	\$ 72,596 ⁴	1993/94	\$ 460,779
1999-2000	\$ 612,268 ⁵	1992/93	\$ 257,644
1998/99	\$ 778,012 ⁶	1991/92	\$ 152,618
1997/98	\$ 629,603	1990/91	\$ 115,391
1996/97	\$ 787,762 ⁷	1989/90	\$ 148,417
		1988/89	\$ 86,752

Source: Library

¹ Volumes include books, microforms, pamphlets and government documents.

² Reflects changes in Infotrac subscriptions.

³ Includes \$88,017 from Library Campaign.

*Includes print and electronic resources

⁴ Includes \$88,433 from Library Campaign and \$75,996 for electronic resources.

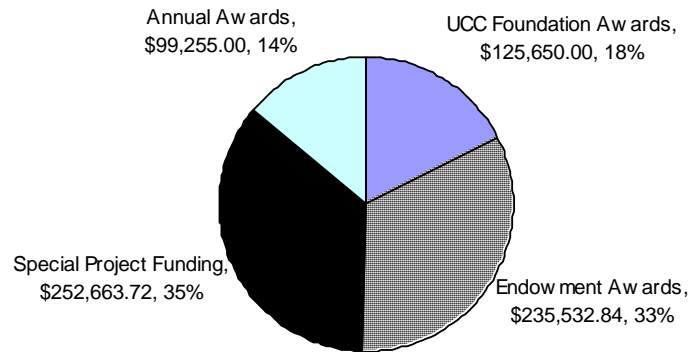
⁵ Includes \$39,853 from Library Campaign.

⁶ Includes \$108,484 from Library Campaign.

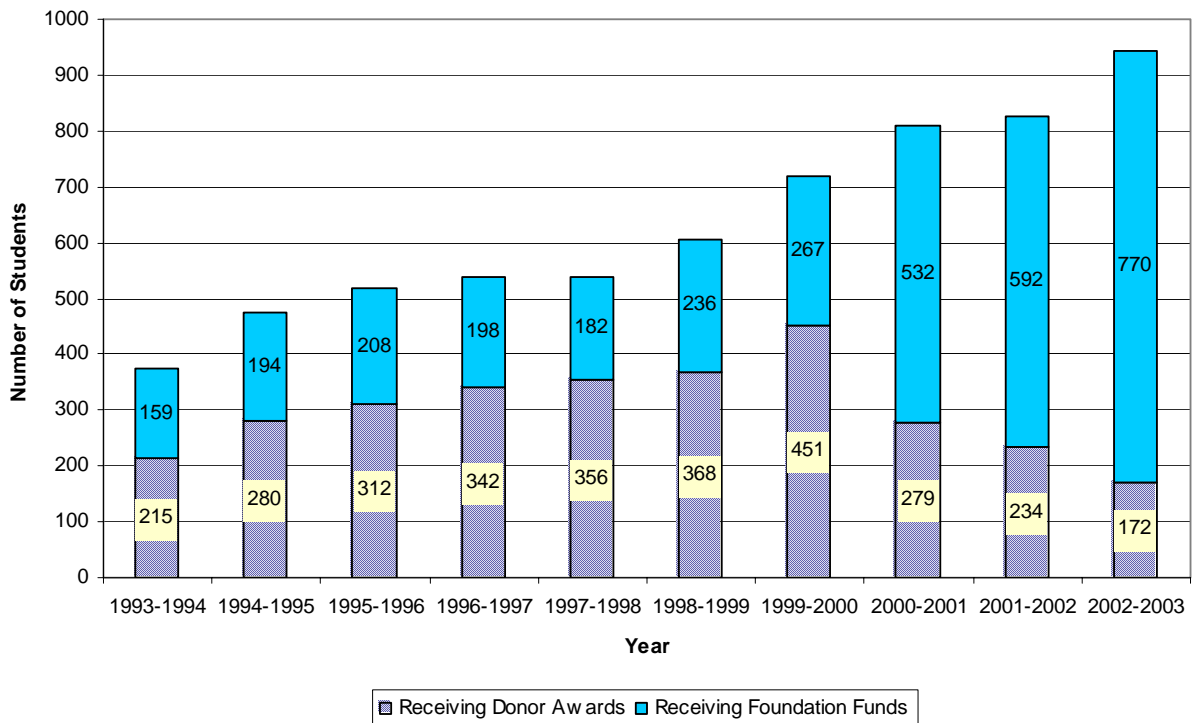
⁷ Includes \$295,676 from Library Campaign.

UCC FOUNDATION: 2002-2003

UCC Foundation Disbursements to Students: 2002-2003



**Total Students Funded through the UCC Foundation for the fiscal year April 1, 2002
- March 31, 2003**



Source: UCC Foundation

THE UNIVERSITY COLLEGE OF THE CARIBOO

Exhibit B - Statement of Financial Activity and Changes in Net Assets

Year ended March 31, 2003 with comparatives for 2002

	Operating Fund	Capital Fund	Ancillary Services Fund	Bursary and Trust Fund	Specific Services Fund	2003	2002
Revenue:							
Government Grants	\$ 46,641,609	-	-	-	\$ 3,163,589	\$ 49,805,198	\$ 49,530,582
Tuition fees	19,512,989	-	-	-	228,388	19,741,377	15,325,639
Gifts, grants and bequests	-	-	-	734,738	-	734,738	475,064
Other	2,522,137	18,193	-	-	2,732,378	5,272,708	2,986,312
Ancillary services	-	-	6,956,714	-	-	6,956,714	6,583,024
Amortizations of deferred contributions	-	3,750,401	-	-	-	3,750,401	3,832,711
Capital contributions for repairs	-	1,719,803	-	-	-	1,719,803	1,834,630
	68,676,735	5,488,397	6,956,714	734,738	6,124,355	87,980,939	80,567,962
Expenditures:							
Salaries - instructional	29,501,346	-	-	-	638,969	30,140,315	29,570,650
Salaries - other staff	13,278,155	-	1,063,867	-	909,857	15,251,879	14,609,053
Employee benefits	7,442,211	-	205,714	-	246,348	7,894,273	6,249,655
Repairs and maintenance	400,121	1,719,803	51,626	-	43,439	2,214,989	2,586,361
Cost of goods sold	-	-	3,390,692	-	-	3,390,692	3,301,569
Expendable supplies	3,340,376	-	738,282	-	262,799	4,341,457	4,575,473
Memberships and subscriptions	256,201	-	6,191	-	950	263,342	226,312
Computer processing	7,057	-	-	-	-	7,057	8,607
Travel	2,048,714	-	25,564	-	625,998	2,700,276	2,189,288
Debt services	-	456,460	-	-	-	456,460	566,972
Building rentals and leases	807,395	-	-	-	12,143	819,538	888,216
Equipment rentals and leases	397,928	-	459,663	-	198,618	1,056,209	719,446
Advertising and public relations	596,055	-	-	-	37,747	633,802	427,145
Staff recruitment	205,585	-	-	-	27,611	233,196	248,087
Professional fees	817,152	-	182,957	2,014	983,819	1,985,942	1,491,618
Contractor fees and arrangements	2,146,603	-	-	-	-	2,146,603	2,286,696
Periodicals	432,540	-	-	-	-	432,540	371,270
Marketing	-	-	17,288	-	-	17,288	21,556
Carried forward	61,677,439	2,176,263	6,141,844	2,014	3,988,298	73,985,858	70,337,974

Source: Office of VP of Finance

THE UNIVERSITY COLLEGE OF THE CARIBOO

Exhibit B - Statement of Financial Activity and Changes in Net Assets (continued)

Year ended March 31, 2003, with comparatives for 2002

	Operating Fund	Capital Fund	Ancillary Services Fund	Bursary and Trust Fund	Specific Services Fund	2003	2002
Brought forward	\$ 61,677,439	\$ 2,176,263	\$ 6,141,844	\$ 2,014	\$ 3,988,298	\$ 73,985,858	\$ 70,337,974
Expenditures (continued):							
Miscellaneous	3,139	-	52	-	613	3,804	26,500
UCC Board	137,903	-	-	-	-	137,903	167,648
UCC Alumni	110,200	-	-	-	-	110,200	108,100
UCC Foundation	172,700	-	-	-	-	172,700	115,250
Aquatic centre contribution	150,000	-	-	-	-	150,000	150,000
Renovations	78,320	-	141,772	-	22,643	242,735	201,592
Building service contract	783,909	-	61,618	-	7,178	852,705	858,816
Security contract	170,253	-	-	-	46,651	216,904	209,016
Insurance	83,771	-	-	-	32,596	116,367	77,057
Postage	134,637	-	-	-	141	134,778	153,209
Utilities	1,230,641	-	-	-	6,633	1,237,274	1,351,624
Bursaries & Scholarships	-	-	-	620,251	-	620,251	469,241
Telephone	248,845	-	6,313	-	2,761	257,919	318,291
Amortization	-	4,655,511	-	-	-	4,655,511	4,470,192
	64,981,757	6,831,774	6,351,599	622,265	4,107,514	82,894,909	79,014,510
Excess (deficiency) of revenue							
over expenditures for the year	3,694,978	(1,343,377)	605,115	112,473	2,016,841	5,086,030	1,553,452
Net assets, beginning of year	(7,942,281)	5,624,856	291,633	244,756	2,907,247	1,126,212	(427,240)
Transfers:							
Capital assets	(11,949)	200,268	(56,894)	-	(131,424)	-	-
Debt services	-	400,000	(400,000)	-	-	-	-
Library acquisitions	(256,200)	355,570	-	-	(99,370)	-	-
Other	(2,233,911)	2,360,846	-	-	(126,935)	-	-
Net assets, end of year	\$ (6,749,363)	\$ 7,598,163	\$ 439,854	\$ 357,229	\$ 4,566,359	\$ 6,212,242	\$ 1,126,212

Source: Office of VP of Finance