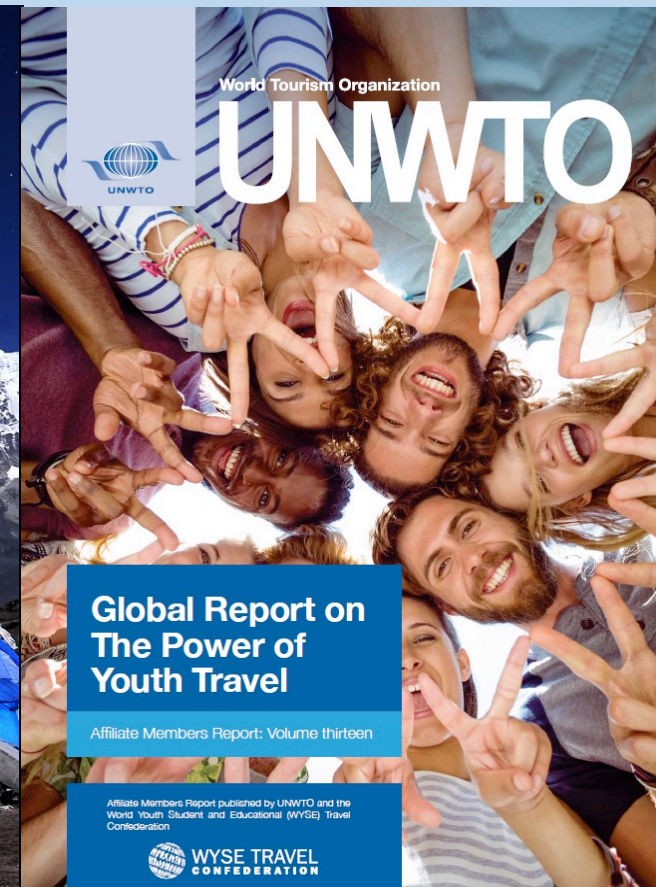
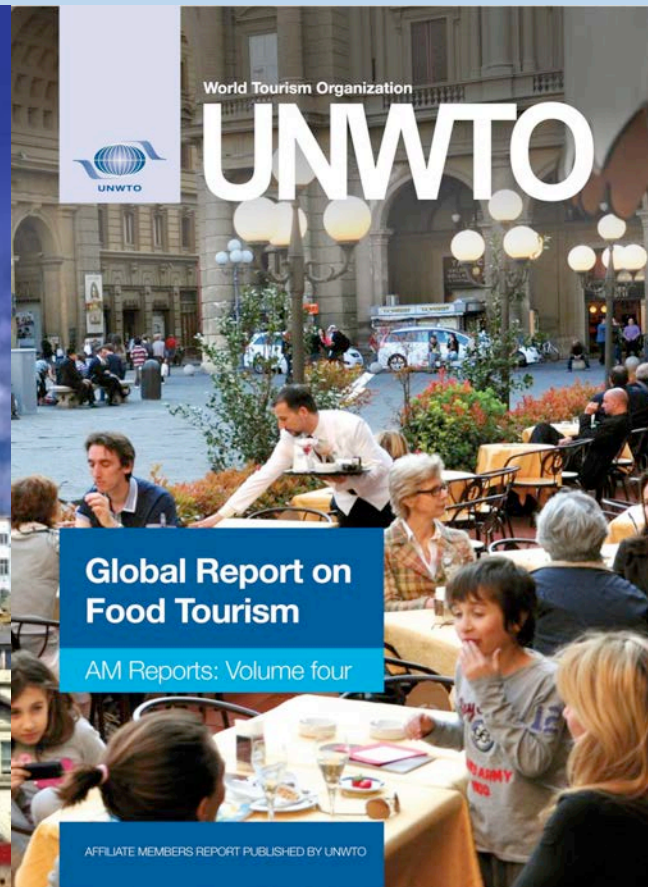
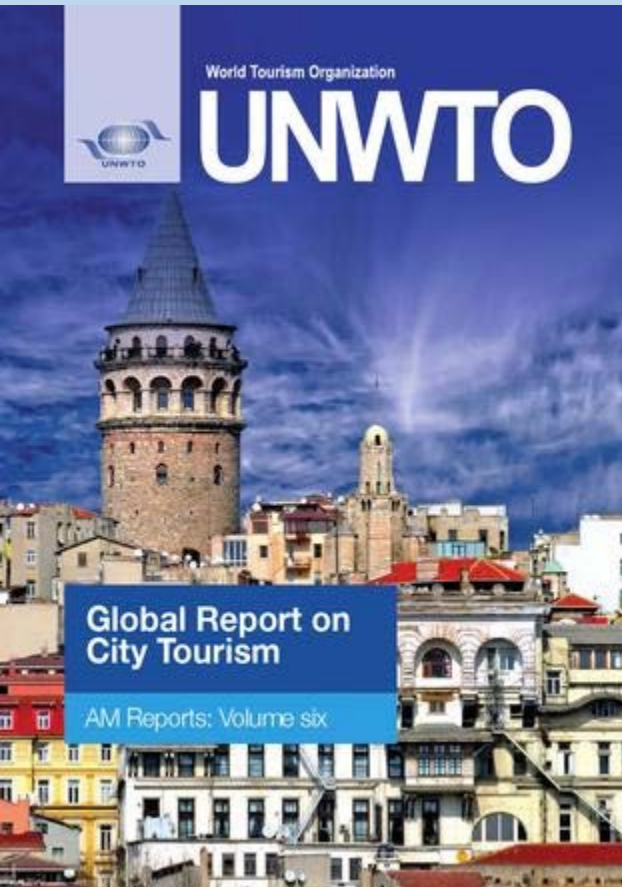


Faculty of Adventure, Culinary Arts, Tourism



Research Profile, Agenda and Strategy

Faculty of Adventure, Culinary Arts, Tourism

Informed by:

- **Research and Graduate Studies (2018) *Strategic Consultation***
- **Research and Graduate Studies (2020) *External Reviewer Report***
- **Research career in social sciences**
- **Head of Department / Dean of multidisciplinary academic units**

Noted:

- **Strategic Research Plan encourages “individual research programs, recognizing the importance of intellectual freedom for researchers to pursue their interests and passions”**
- **The “mandate for awareness, appreciation, and cooperation with Indigenous communities” (consistent across Commonwealth universities)**

Faculty of Adventure, Culinary Arts, Tourism

FACT research capacity:

- **CRC Chair**
- **Rural Livelihoods and Sustainable Communities Lab (graduate students / undergraduate research mentorship)**
- **Tripartite Professor**
- **Three tripartite Associate Professors (one Adventure Studies; two Tourism—one medical leave; one phased retirement)**
- **Three consistent research-active bipartite faculty (one retiring)**
- **Two 'inconsistent' research-active bipartite faculty**

Faculty of Adventure, Culinary Arts, Tourism

Current strategies (maximize output):

- Encourage / financially support course releases
- APARS
- Budget requests: two tripartite appointments (one in Adventure; one in Tourism)

Medium term

- Five tripartite appointments
- Master Tourism Studies
- Research Centre



UNWTO



UNWTO



UNWTO



UNWTO

Global Report on
City Tourism

AM Reports: Volume six

Global Report on
Food Tourism

AM Reports: Volume four

Global Report on
Adventure Tourism

AM Reports: Volume nine

Affiliate Members Report published by UNWTO and the
Adventure Travel Trade Association



Global Report on
The Power of
Youth Travel

Affiliate Members Report: Volume thirteen

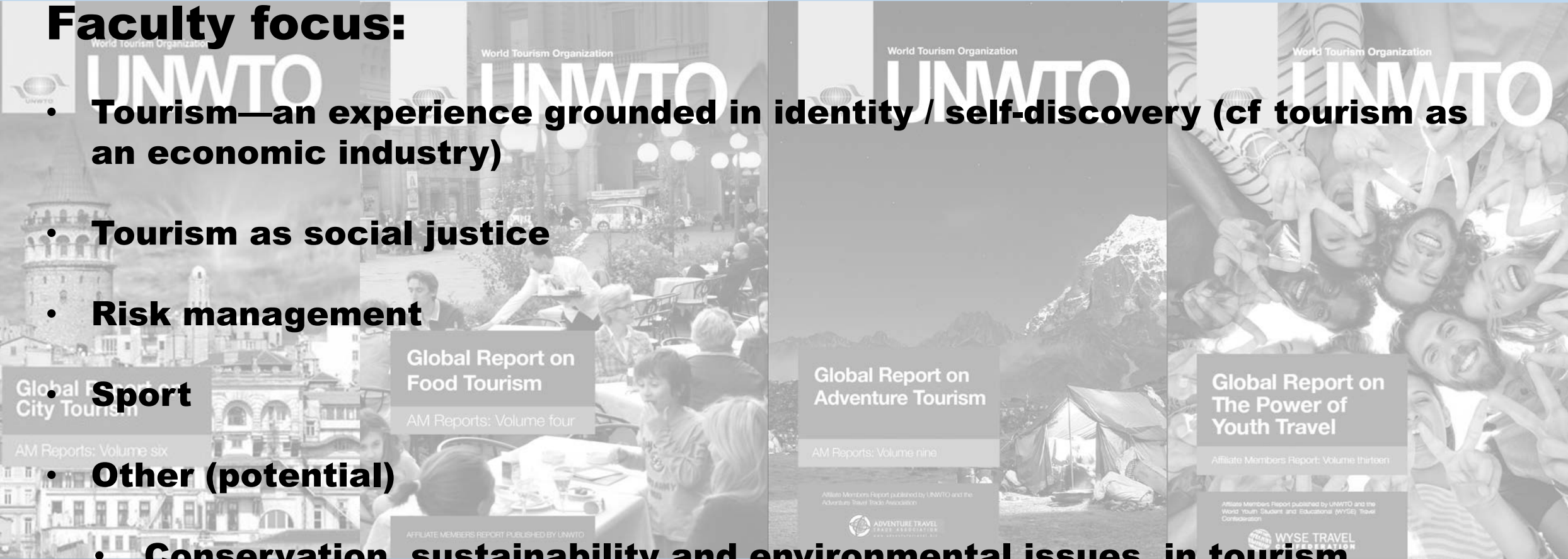
Affiliate Members Report published by UNWTO and the
World Youth Student and Educational (WYSE) Travel
Confederation



Faculty of Adventure, Culinary Arts, Tourism

Faculty focus:

- **Tourism—an experience grounded in identity / self-discovery (cf tourism as an economic industry)**
- **Tourism as social justice**
- **Risk management**
- **Sport**
- **Other (potential)**
 - **Conservation, sustainability and environmental issues in tourism**
 - **Tourism in rural and indigenous communities**
 - **Health, wellness in sport**



Faculty of Adventure, Culinary Arts, Tourism

Dr Kellee Caton: Themes, approaches, collaborations

- **tourism as a sociocultural phenomenon—how we know and can reshape the world through tourism. Philosophically grounded (rather than empirical) research based on**
- **tourism as a moral practice**
- **human development and well-being in tourism and leisure**
- **moral aspects of human–environmental encounters**
- **knowledge development and dissemination in tourism (what claims can we make that knowledge is advancing tourism studies)**

Faculty of Adventure, Culinary Arts, Tourism

Dr Kellee Caton: Themes, approaches, collaborations

- **co-chair Critical Tourism Studies international network (SSHRC grant formalizing network into research partnership)**
- **member Tourism Education Futures Initiative (network pursuing projects on tourism curriculum and pedagogy)**
- **fellow Tourism RESET (race, ethnicity, and social equity in tourism) (network pursuing social justice projects)**
- **member new collaboration (eight Canadian and international scholars) (investigating moral imaginaries of human-environment interaction through tourism)**

Faculty of Adventure, Culinary Arts, Tourism

Dr Courtney Mason: Themes, approaches, collaborations

- Canadian history, Indigenous studies, food security, marginalized youth in sport, tourism
- community-based engagement Indigenous peoples
- inform public policy
- promote sustainability
- promote community capacity
- national collaborative research (Canadian Mountain Network, Networks of Centres of Excellence)
- international collaborative research (Indigenous knowledge and parks)

