



Winter 2022 Enrolment Update

TRU Senate

INTEGRATED PLANNING AND EFFECTIVENESS | February 2022



About this update

Enrolment Snapshot as of January 25

[On Campus Winter 2022 Term](#) and [Open Learning Fiscal Year To-Date](#)

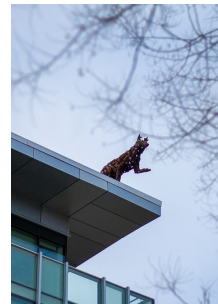
Student Headcount

- By Campus and Residency
- Demographics (residency, origin, age)
- Comparison to Previous Years
- Dually Enrolled

Course Enrolments

- By Campus and Residency
- By Course Division
- Comparison to Previous Years

Utilization (Ministry Targets)



INTEGRATED PLANNING AND EFFECTIVENESS | FEBRUARY 2022



Definitions

Winter 2022 enrolment snapshot as of
January 25, 2022

<p>Headcount Enrolment</p> <p>1 student = 1 headcount</p>	<p>Course Enrolment</p> <p>Every course in which a student is enrolled</p> <p>1 student = 1 or more course enrolments</p>	<p>Full Time Equivalent (FTE)</p> <p>FTE converts course enrolments to the number of students carrying a normal full credit load for the year (Ministry accountability)</p>
--	--	--



Highlights

Student Headcount and Course Enrolments



On Campus
Winter 2022 Term

Headcount: 8,739

8,871 in same period last year (-1%) 9,479 in same period 2 years ago (-8%)

Course Enrolments: 31,722

32,880 in same period last year (-4%) 35,720 in same period 2 years ago (-11%)



Open Learning
FYTD: Apr 1 – Jan 25

Headcount: 13,845

15,696 in same period last year (-12%) 15,295 in same period 2 years ago (-9%)

Course Enrolments: 28,015

30,471 in same period last year (-8%) 28,844 in same period 2 years ago (-3%)

Excludes: Continuing Studies



Student Headcounts

INTEGRATED PLANNING AND EFFECTIVENESS | FEBRUARY 2022



Headcount

On Campus, Winter Term

8,739

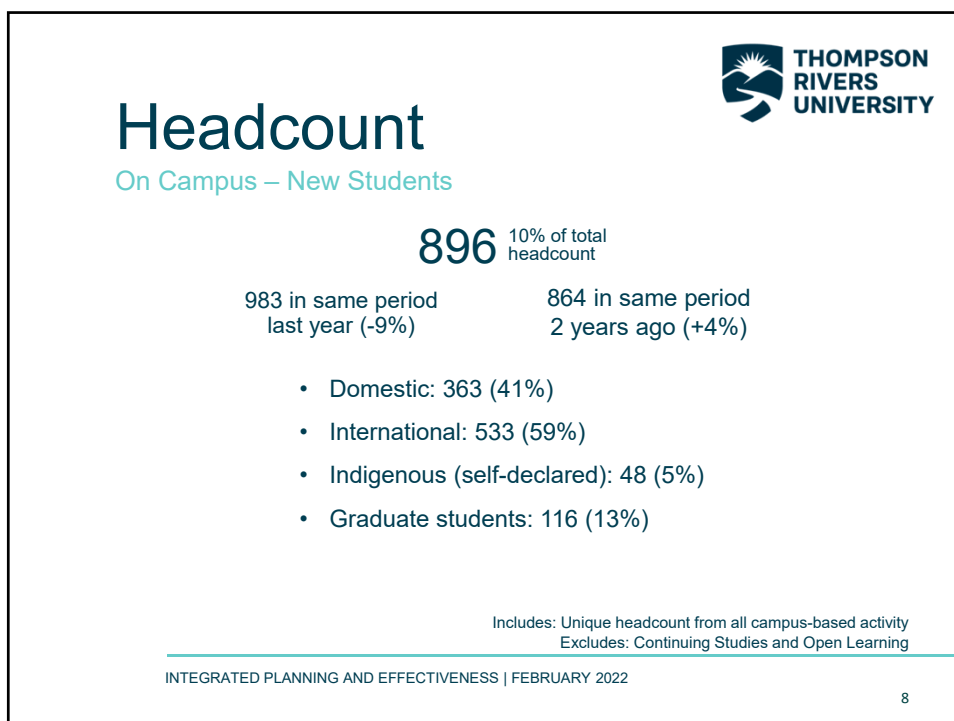
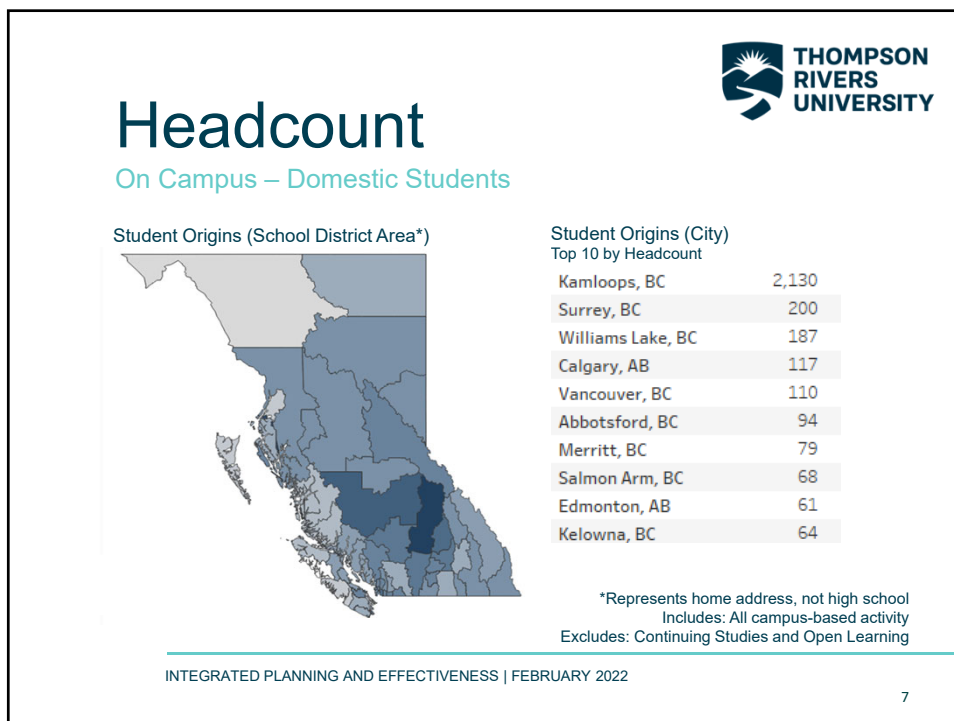
8,871 in same period
last year (-1%)

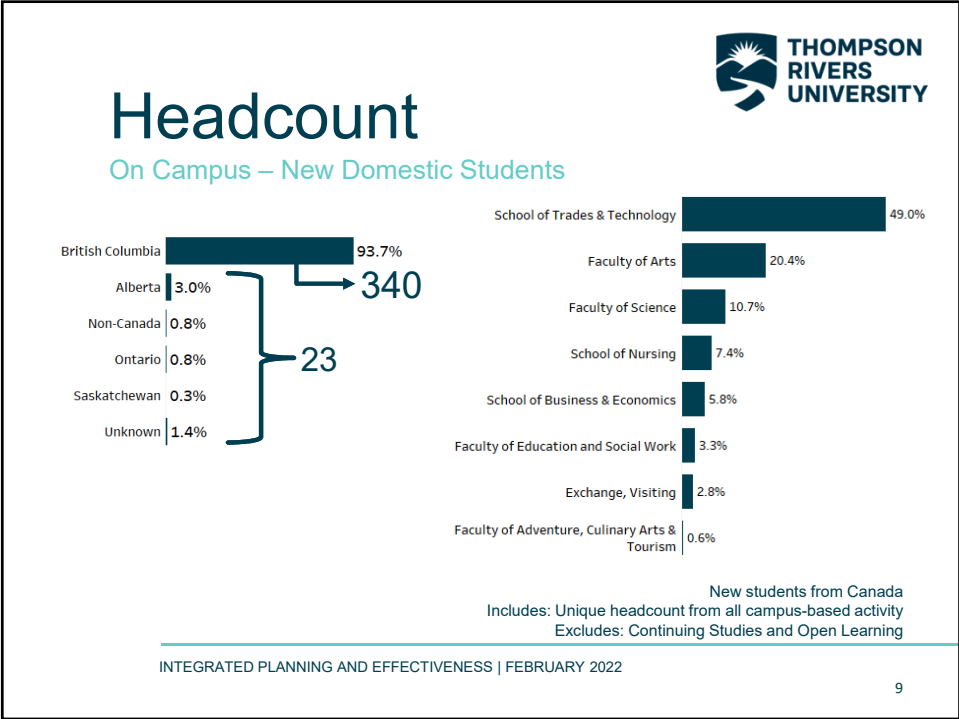
9,479 in same period
2 years ago (-8%)

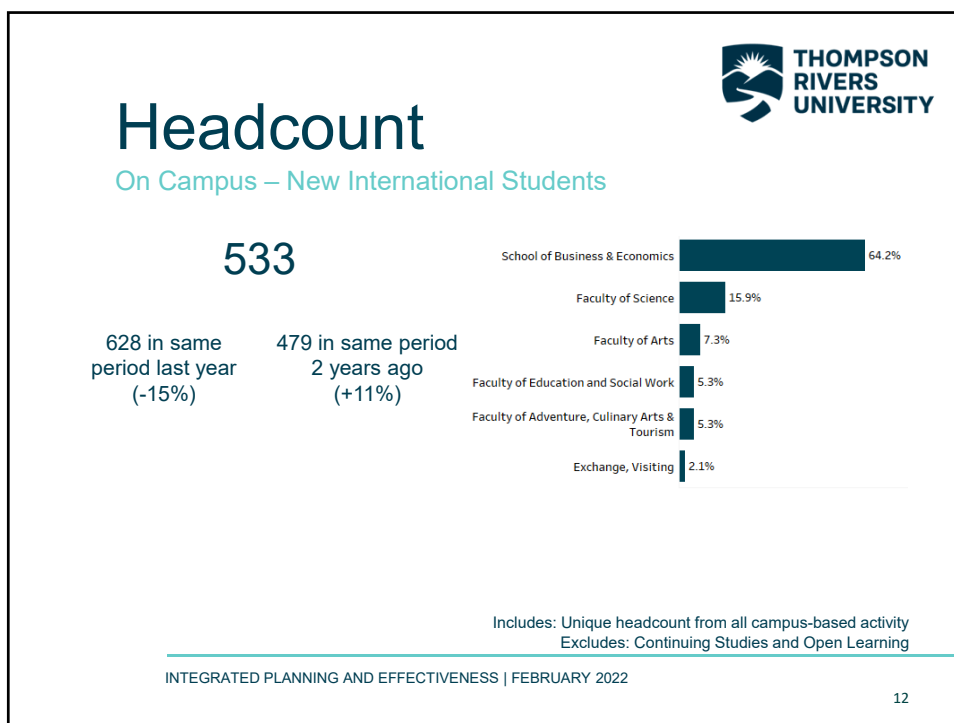
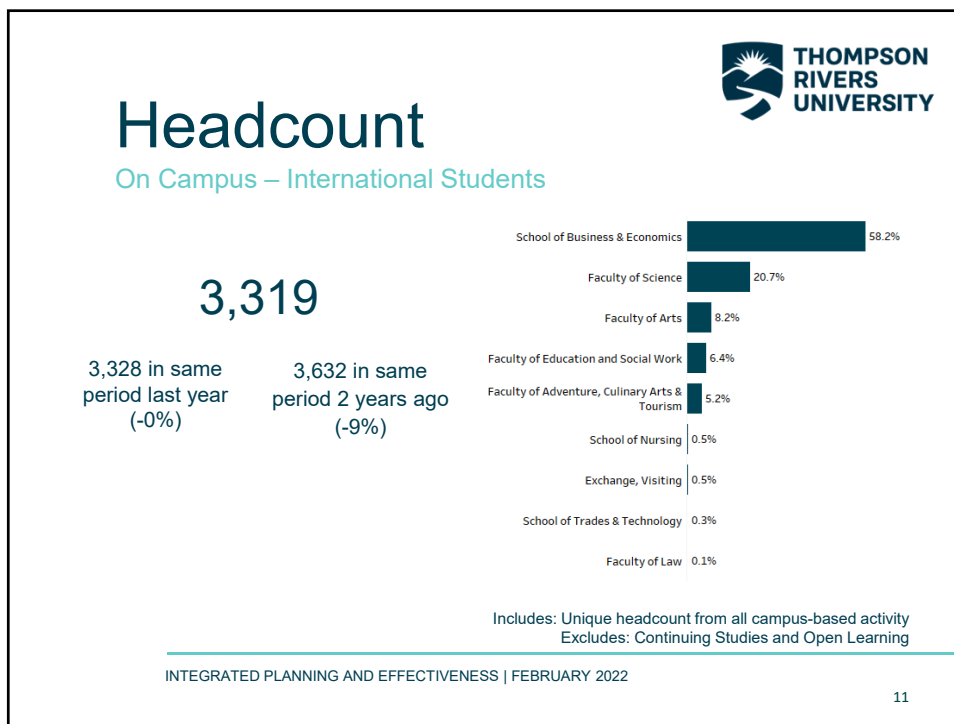
- Domestic: 5,420 (62%)
- International: 3,319 (38%)
- Indigenous (self-declared): 644 (7%)
- Graduate students: 681 (8%)
- Law students: 335 (4%)

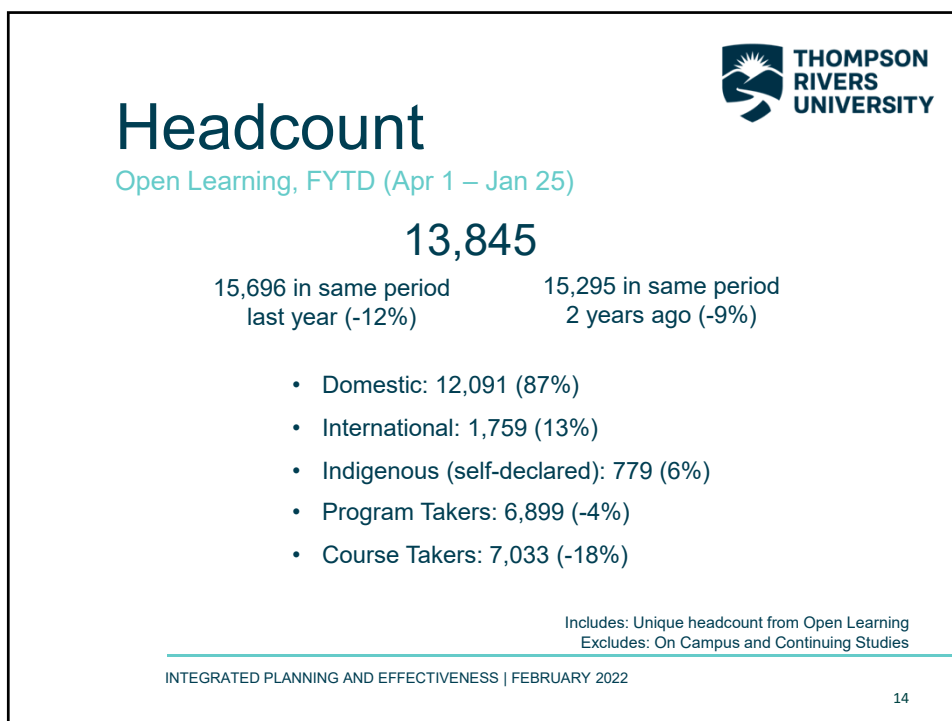
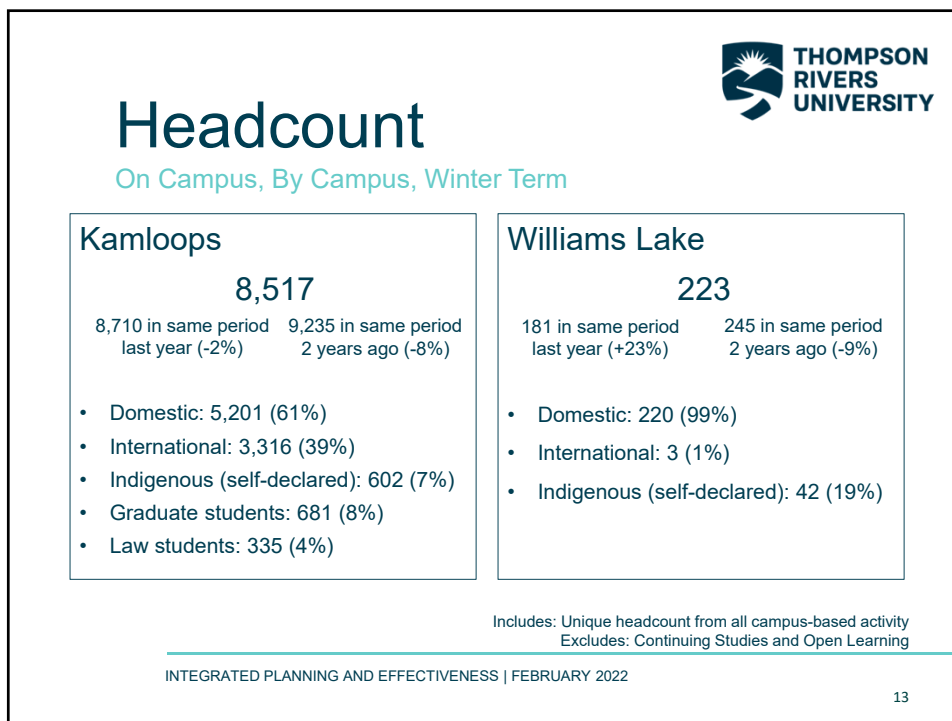
Includes: Unique headcount from all campus-based activity
Excludes: Continuing Studies and Open Learning

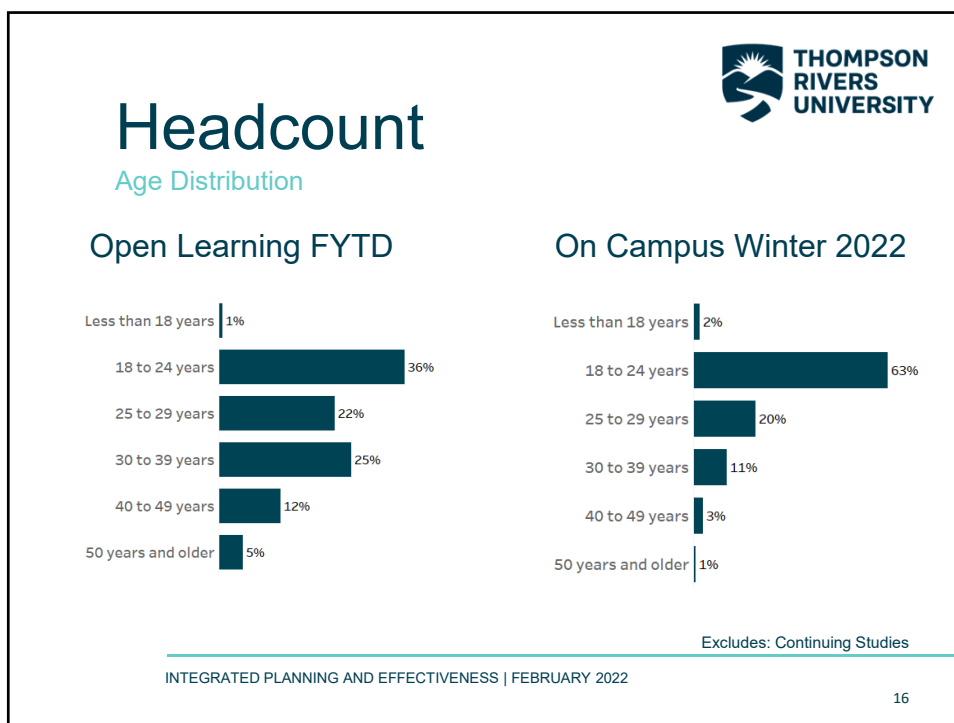
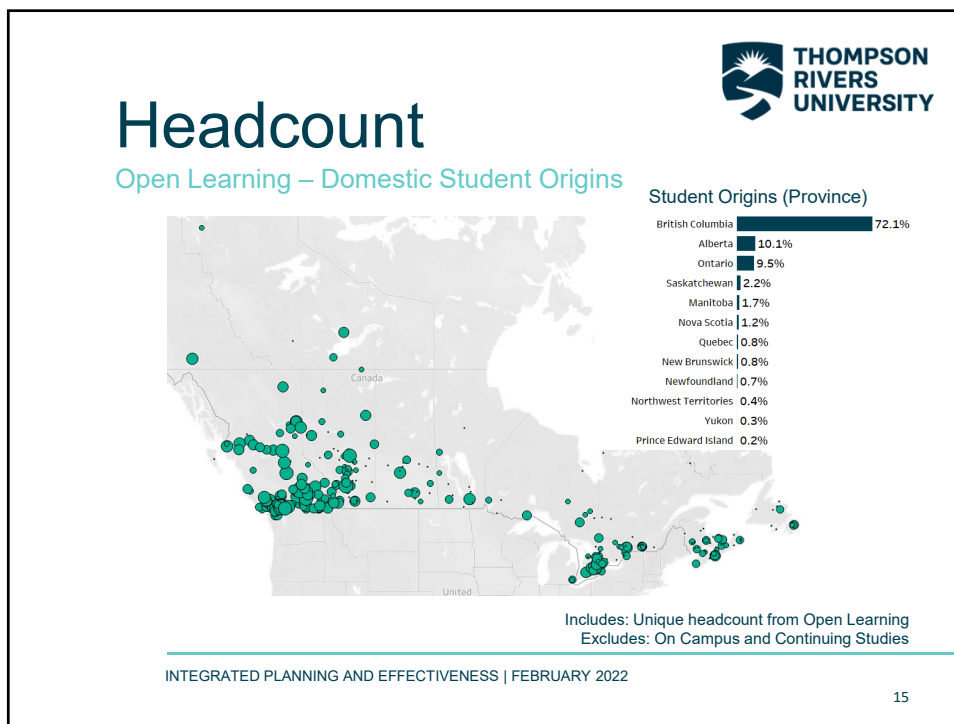
INTEGRATED PLANNING AND EFFECTIVENESS | FEBRUARY 2022















Dual Enrolment Activity

FYTD (Apr 1, 2021 to Jan 25, 2022)

INTEGRATED PLANNING AND EFFECTIVENESS | FEBRUARY 2022 17



Headcount

Dually Enrolled FYTD

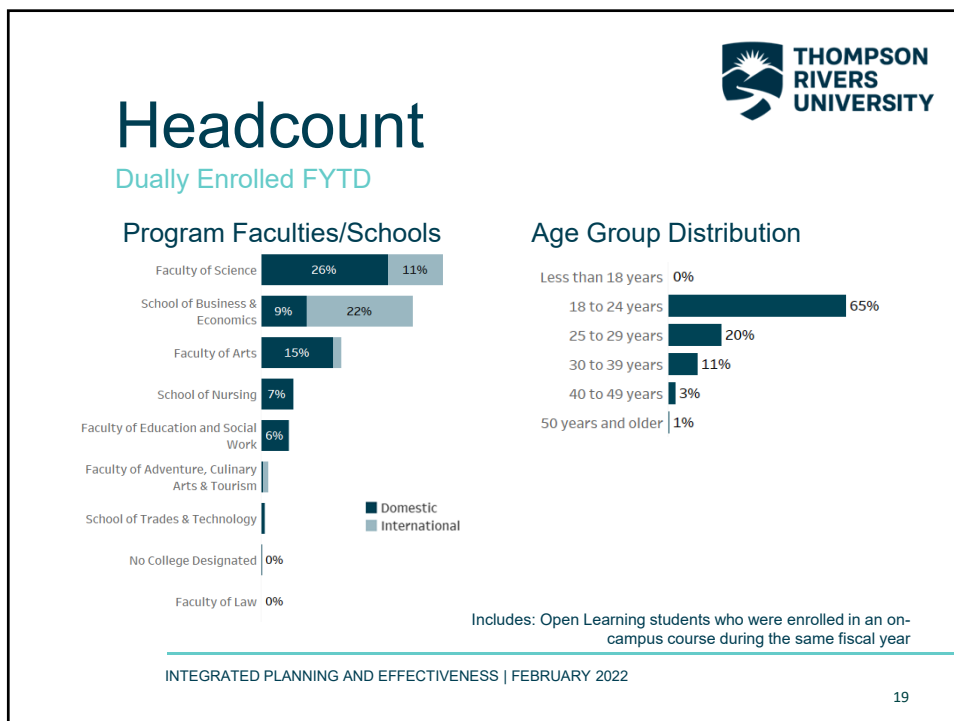
1,129

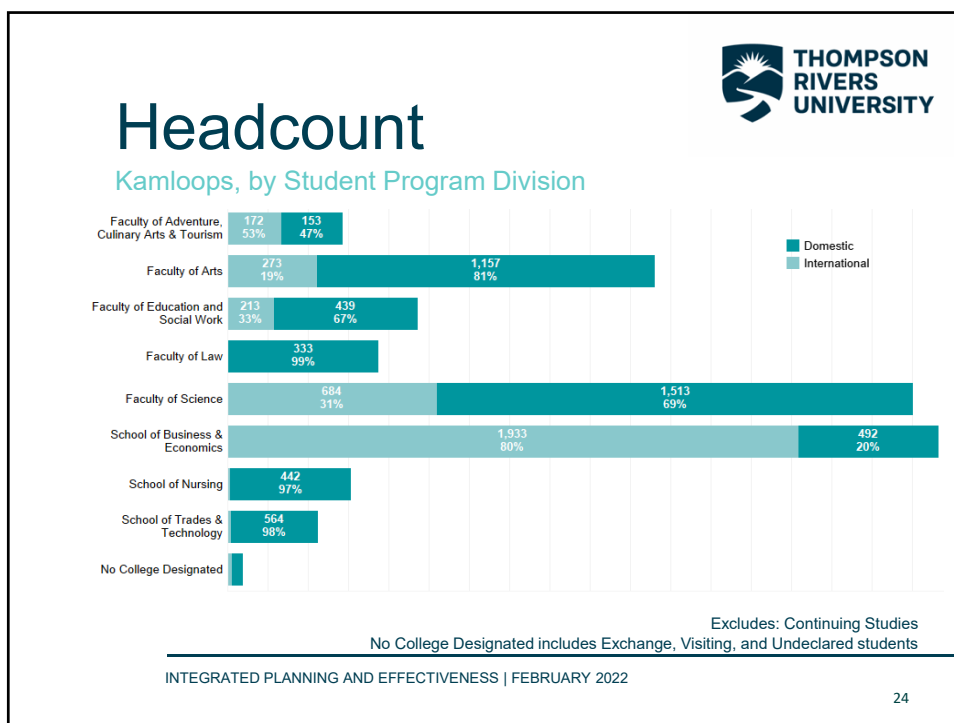
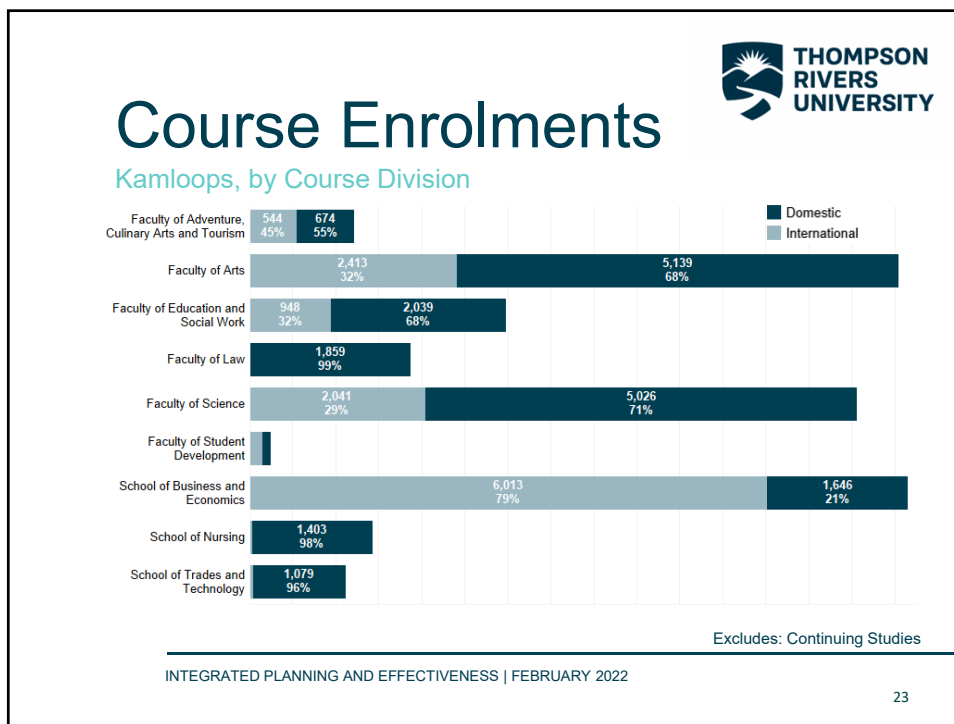
1,484 in same period last year (-24%)	1,517 in same period 2 years ago (-26%)
--	--

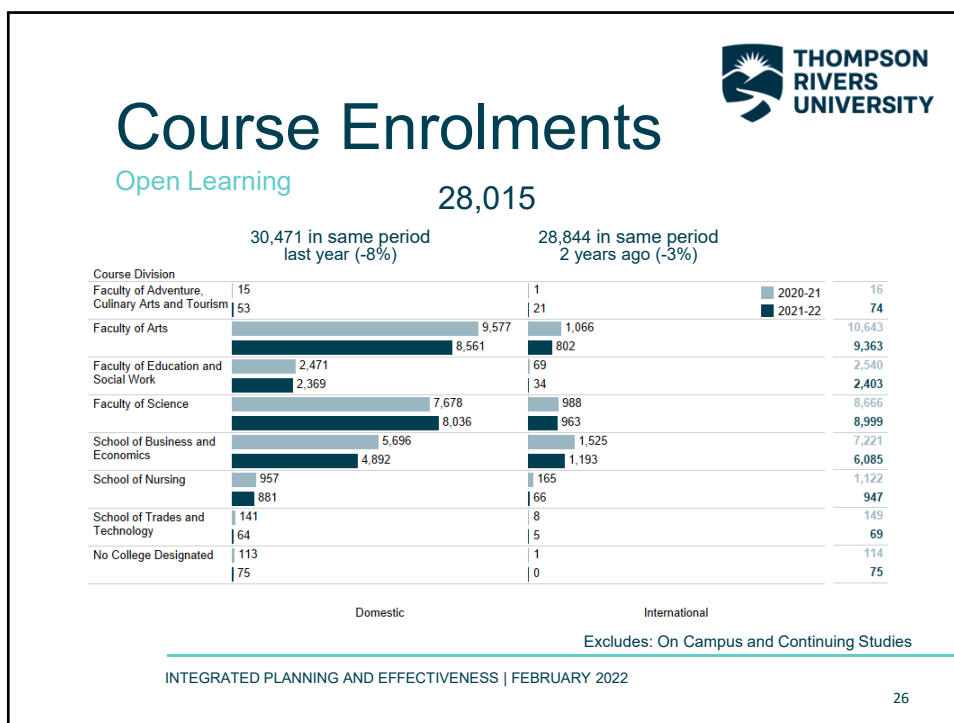
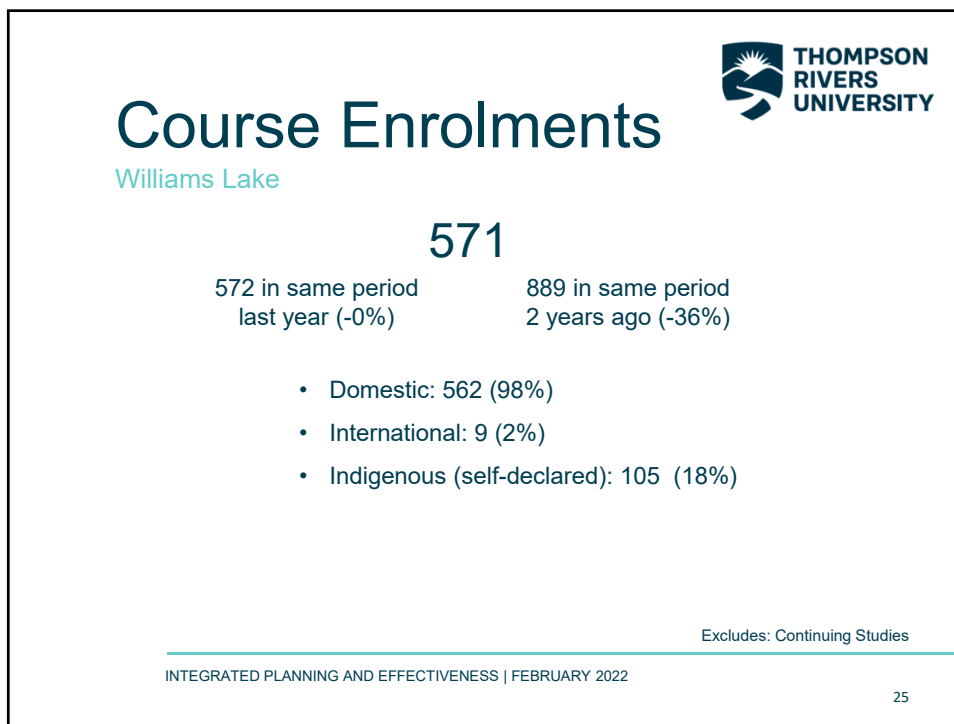
- Domestic: 725 (64%)
- International: 404 (36%)
- Indigenous (self-declared): 84 (7%)

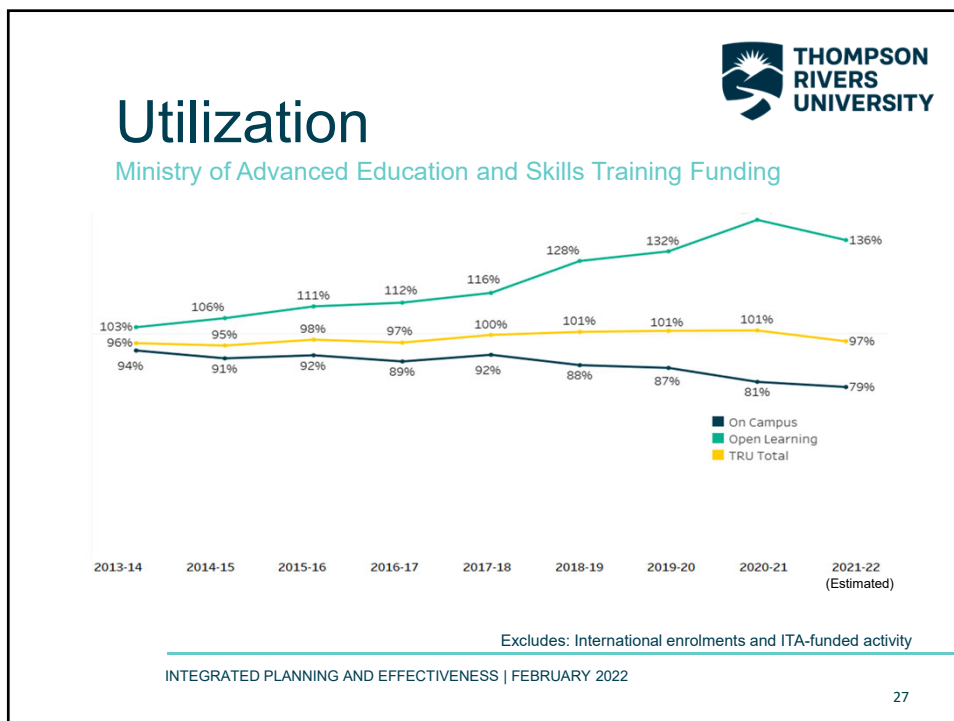
Includes: Open Learning students who were enrolled in an on-campus course during the same fiscal year

INTEGRATED PLANNING AND EFFECTIVENESS | FEBRUARY 2022 18









THOMPSON RIVERS UNIVERSITY

Additional Resources

Enrolment Report
<https://onetru.sharepoint.com/sites/IPA/SitePages/StudentProfiles.aspx>

Student Profiles
<https://onetru.sharepoint.com/sites/IPA/SitePages/StudentProfiles.aspx>

Questions?

INTEGRATED PLANNING AND EFFECTIVENESS | FEBRUARY 2022

28